

SPEC:

A. Material:

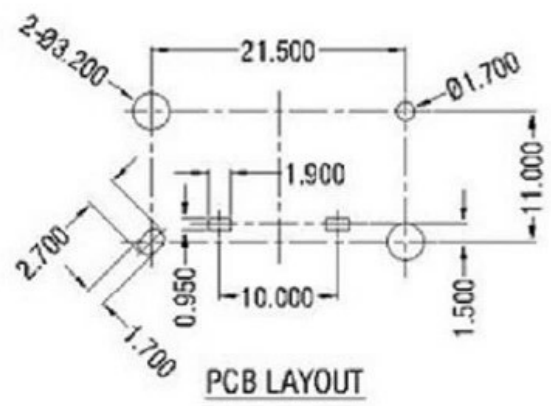
1. Housing: PBT+30%G.F
2. Terminal: COPPER ALLOY, TIN PLATED
3. PIN: COPPER ALLOY, NI PLATED

B. Electrical Characteristics:

1. Rating: 2.5A 250V~(UL,CUL,ENEC,CCC)
7A 125V~(UL,CUL)
2. Electric Strength: AC 2,000 V FOR ONE MINUTE
3. Insulation Resistance: 100MΩ MIN, AT 500V DC

C. Approvals:
UL, CUL, CCC, ENEC

D. Suggestion: use screw as follows, Screw torque 4~5kgf.cm



				普通公差 COMMON TOLERANCE :	 广东科斯达电子科技有限公司 Guang dong Keside Electronic Technology Co., Ltd.					
				UP TO 5 ±0.20					单位	mm
				ABOVE 5 TO 30 ±0.30	绘图	林晓良	核校	张平	型号	
				ABOVE 30 ±0.50	日期	19. 08. 12	核校	周培雷	料号	KSD-AC JACK
REV.	DATE	REVISION DESCRIPTION	ISSUE	ANGULAR ±5°	日期	19. 08. 12	核校	周培雷	料号	KSD-AC JACK