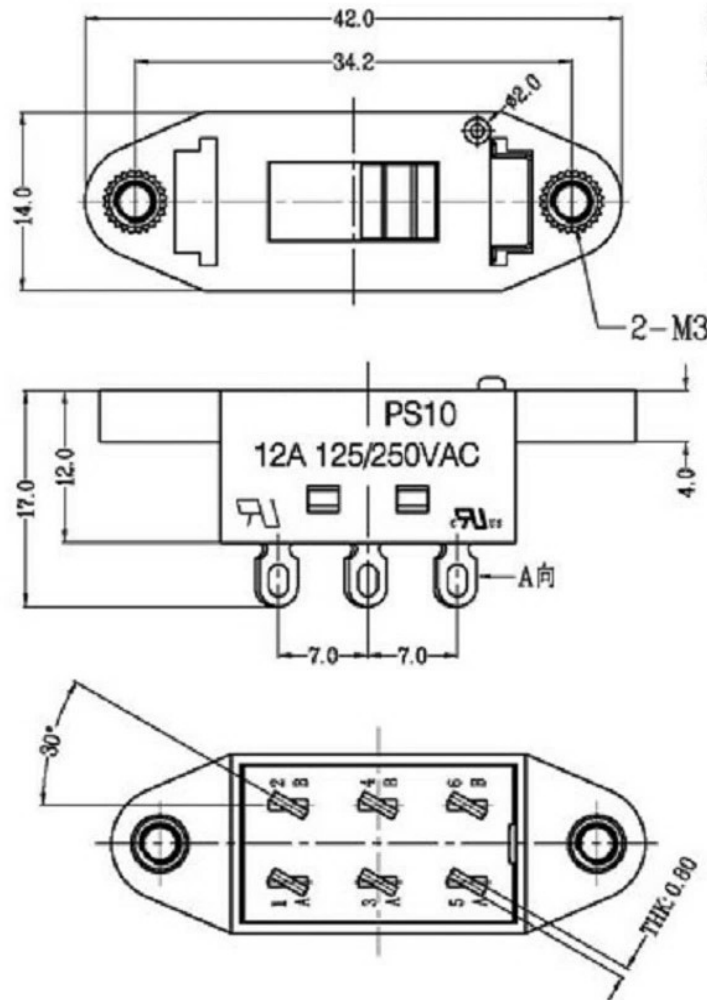
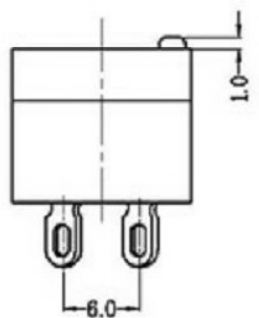
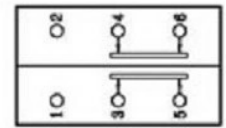




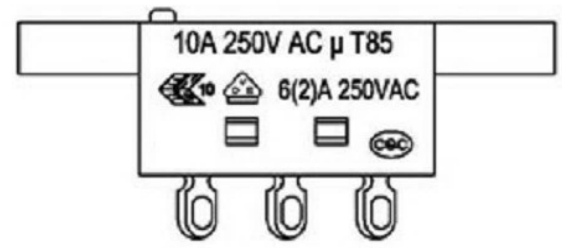
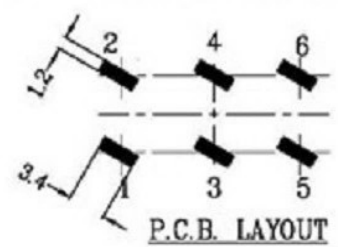
CAD FILE:



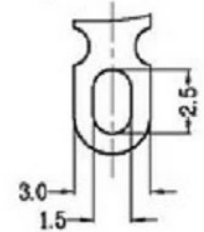
1. FUNCTION: 2P2T
2. RATING: UL: 12A 125/250VAC  
CQC: 6(2)A 250VAC  
ENEC VDE: 10A 250VAC  $\mu$  T85
3. OPERATION FORCE: 1200 $\pm$ 400g.f
4. CONTACT RESISTANCE:  $\leq$  50 m $\Omega$
5. INSULATION RESISTANCE:  $\geq$  100 M $\Omega$
6. DIELECTRIC WITHSTAND: TERMINAL TO BUTTON 3000VAC/5mA/1MIN/TUE  
TERMINAL TO TERMINAL 1500VAC/5mA/1MIN/TUE
7. CIRCUIT DIAGRAM:




8. SUGGESTED PANEL HOLE SIZE:



A向  
pin脚 正视图



注: "\*"表示关键尺寸(6个)

NO.	PARTS	MATERIALS	Q'TY	FINISH	TOLERANCE UNLESS SPECIFIED	ISSUE	DATE	DESCRIPTIONS OF REVISION	APPD.
8									
7	STEEL BALL	STEEL	1	NATURAL					
6	SPRING	STEEL WIRE	1	NATURAL					
5	CONTACT CLIP	PBS STRIP	2	Ag PLATED					
4	TERMINAL	BRASS STRIP	8	Ag PLATED					
3	BASE	PHENOLIC RESIN	1	NATURAL					
2	FRAME	STEEL STRIP	1	Ni PLATED					
1	KNOB	POM	1	BLACK					
					TITLE : VERTICAL SLIDE SWITCH	UNIT : mm		DRWG NO.:	
					MODEL:	SCALE: 3:1		DWN.	2012-10-26
					 <b>广东科斯达开关厂</b>			CHK'D	
								APPD.	