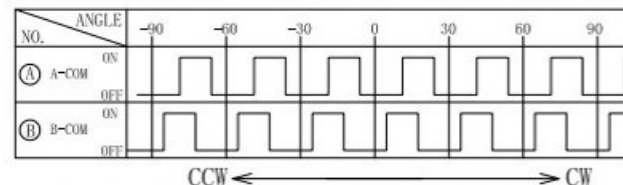
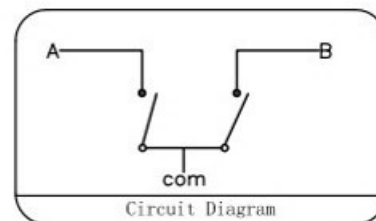
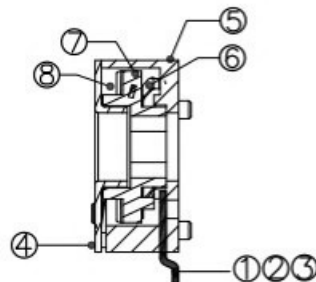
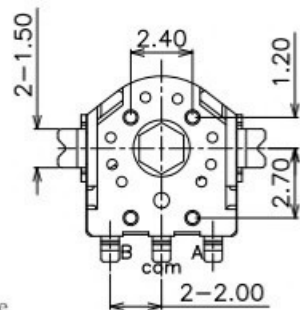
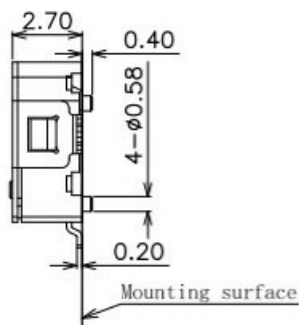
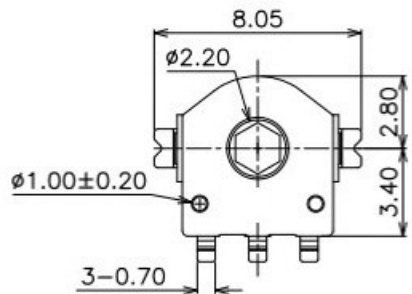
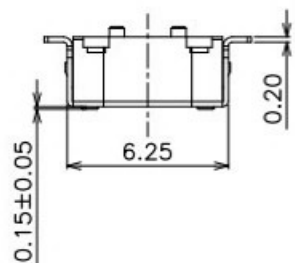


ABIDE BY ROHS



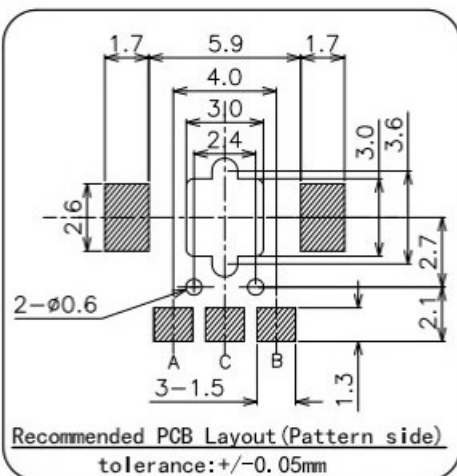
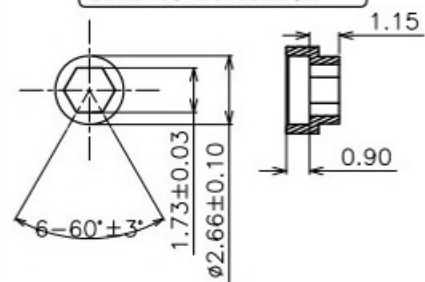
Numbers of detent: 12
Pulse/Rotation: 12 Pulse/360° (reverse)

Specification :

- 1. Rated voltage: D. C. 5V
- 2. Maximum operating current (resistive load)
Each load : 1mA
- 3. Resolution: 12 pulses/360° for each phase
- 4. Contact Resistance: 5Ω (Max)
- 5. Insulation resistance: 50MΩ (Min) DC50V
- 6. Dielectric strength: AC50V (50-60Hz) for 1 minute
- 7. Detent torque: 10-25 gf.cm
- 8. Life Test : 100,000 Cycles

Shaft hole shape and dimension

Shaft hole position will be at random



Recommended PCB Layout (Pattern side)
tolerance: $\pm 0.05\text{mm}$

备注：底座背面的压针孔★是根据产品模具成型要求而定的，其规格的大小与数量的多少对产品结构、功能及使用无任何影响。

ITEM	PART NAME	TER'NO.	QTY.	MATERIAL	FINISHING	REMARK
⑧	Fixed Plate	—	1	Stainless Steel	—	—
⑦	Revolving Wheel	—	1	Nylon	Gray	UL 94HB
⑥	Contact	—	1	Copper Alloy	—	—
⑤	Base	—	1	Nylon	Black	UL 94HB
④	Shell	—	1	SPCC	Plating Tin	—
③	Terminal	3	1	Copper Alloy	Plating Silver	—
②	Terminal	2	1	Copper Alloy	Plating Silver	—
①	Terminal	1	1	Copper Alloy	Plating Silver	—

APPROVALS		DATE	科斯达开关厂										
DRAWN	WUYU	2020. 11. 25	TITLE:	Encoder (IF=3.50mm/SMT)									
CHECKED			PART NO.	CEN653512A01									
APPROVALS			UNIT: mm	SCALE: 1:1	PROJ:								
TOLERANCES ARE	<table border="1"> <tr> <td>30<L</td> <td>±0.30</td> </tr> <tr> <td>10<L≤30</td> <td>±0.20</td> </tr> <tr> <td>5<L≤10</td> <td>±0.15</td> </tr> <tr> <td>L≤5</td> <td>±0.10</td> </tr> </table>	30<L	±0.30	10<L≤30	±0.20	5<L≤10	±0.15	L≤5	±0.10	ANGLE	±2°	DRAWING NO.	SHEET 1 OF 1
30<L	±0.30												
10<L≤30	±0.20												
5<L≤10	±0.15												
L≤5	±0.10												

A

ECN NO.	REV.	DATE.	DESCRIPTION.	CHANGE.	CHECK.	APPRO.
	AO		NEW			

4

3

2

1

A