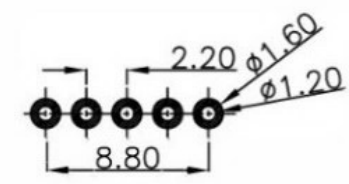
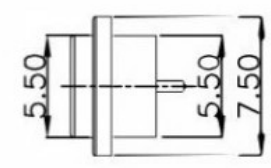
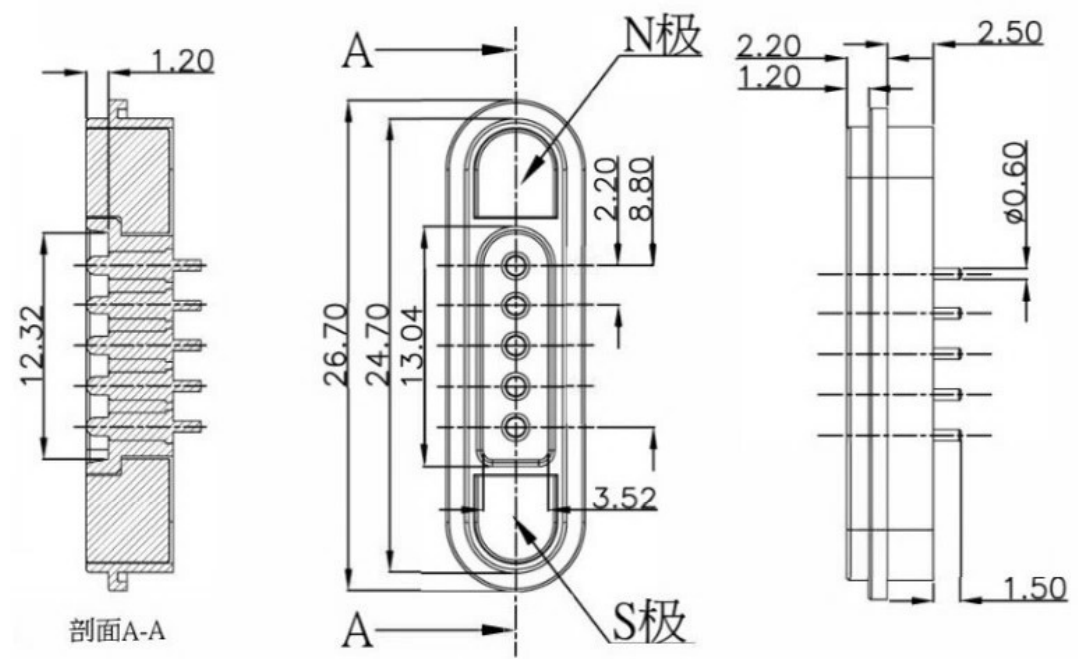
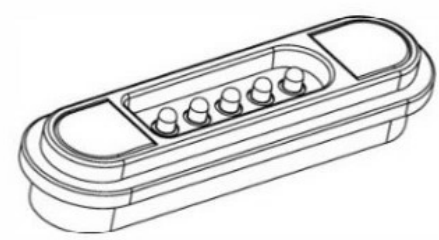


DATE	DR.BY	ECN.NO.	DESCRIPTION	MARK	VER.
18/12'06			NEW DWG		A0



Recommended pcb layout  
Layout tolerance:  $\pm 0.05\text{mm}$



1. 材料和电镀

接触头为(斜头)黄铜合金(C3604), 镀镍50-70  $\mu$ "镀金1  $\mu$ "  
导管为黄铜合金(C3604), 镀镍50-70  $\mu$ "镀金1  $\mu$ "

2. 塑胶材质

PA46+30%玻纤

3. 弹力: 120g  $\pm 10\%$

4. 持续工作电流: 1A

5. 工作电压: 12V AC/DC

接触电阻: 30mOhm Max

6. 使用寿命: 20000次

7. 工作温度计: -40  $^{\circ}\text{C}$  - 80  $^{\circ}\text{C}$  90% R. H. Max

8. 中性盐雾测试24小时无锈蚀

-TOLERANCES- UNLESS OTHERWISE SPECIFIED 公差参考表	
X. $\pm 0.10$	X'. $\pm 2.00'$
XX $\pm 0.05$	XX' $\pm 1.00'$
XXX $\pm 0.02$	
X.XXX	

广东科斯达开关厂

		<b>TITLE:</b> 产品品名: POGO PIN			
<b>APPD:</b> 核准:		<b>PRODUCT NO:</b> 产品料号:			
<b>CHECK:</b> 校对:		DATE	SCALE	UNIT	TYPE
<b>DRAW:</b> 绘图: 王芬利		2016.11.21	1:1	mm	CD
		PAGE			
		1/1			