

|          |       |         |             |      |      |
|----------|-------|---------|-------------|------|------|
| DATE     | DR.BY | ECN.NO. | DESCRIPTION | MARK | VER. |
| 18/12'06 |       |         | NEW DWG     |      | AO   |

**1.MATERIAL**

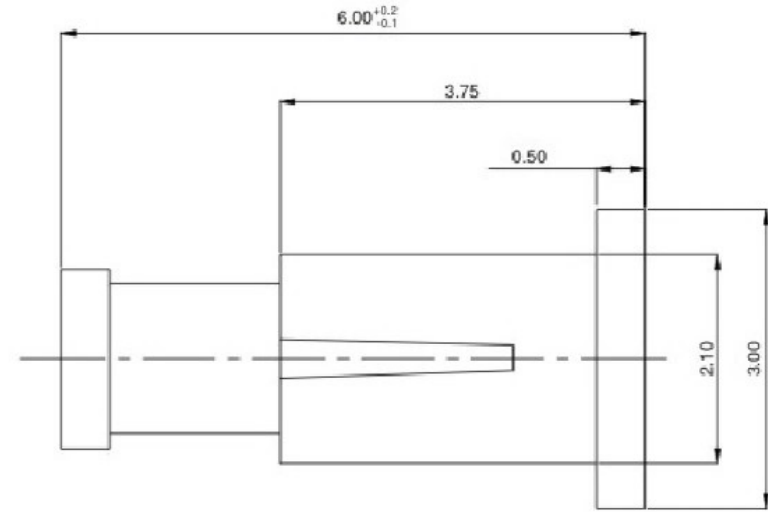
- 1-1 CONTACT PIN: COPPER ALLOY
- 1-2 SOLDER PAD: COPPER ALLOY
- 1-3 SPRING: SWP-B,PIANO WIRE OR EQUIVALENT
- 1-4 HOUSING: HIGH-TEMP.RESIN RATED,  
UL-94V-0,BLACK

**2.MECHERCAL SPECIFICATION:**

- 2-1 CONTACTFORCE(PER CONTACT):  
30±15gf AT 0.10mm WORKING HEIGHT
- 2-2 MAXMUM FULL STROKE: 1.8mm  
WORKING HEIGHT: 0.10mm
- 2-3 DURABILITY: 10,000 CYCLES

**3.ELECTRICAL SPECIFICATION:**

- 3-1 RATED VOLTAGE(PER CONTACT): 12 VOLTS MAX.
- 3-2 RATED CURRENT(PER CONTACT): 2 AMPS MAX.
- 3-3 CONTACT RESISTANCE: 30 MILLIOHMS MAX.



**1. 材料和电镀**

接触头为(斜头)黄铜合金(C3604), 镀镍50-70 μ"镀金1 μ"  
导管为黄铜合金(C3604), 镀镍50-70 μ"镀金1 μ"

**2. 塑胶材质**

PA46+30%玻纤

**3. 弹力: 120g±10%**

**4. 持续工作电流: 1A**

**5. 工作电压: 12V AC/DC**

接触电阻: 30mOhm Max

**6. 使用寿命: 20000次**

**7. 工作温度计: -40℃ - 80℃ 90% R. H. Max**

**8. 中性盐雾测试24小时无锈蚀**

|   |             |   |                                 |
|---|-------------|---|---------------------------------|
| -TOLERANCES-<br>UNLESS OTHERWISE SPECIFIED<br>公差参考表 |             |  <b>广东科斯达开关厂</b>   |                                 |
|   |             |   | <b>TITLE:</b><br>产品品名: POGO PIN |
| X. ±0.10  | X'. ±2.00'  | APPD:<br>核准:  | PRODUCT NO:<br>产品料号:            |
| XX ±0.05  |             | CHECK:<br>校对:   | DATE                            |
| XXX ±0.02   | X.X' ±1.00' | DRAW:<br>绘图:  | SCALE                           |
| X.XXX _____   |             | 王芬利   | UNIT                            |
|   |             | 2016.11.21  | TYPE                            |
|   |             | 1:1   | PAGE                            |
|   |             | mm  | CD                              |
|   |             |   | 1/1                             |