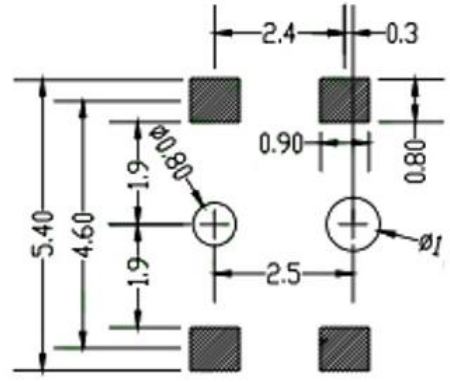
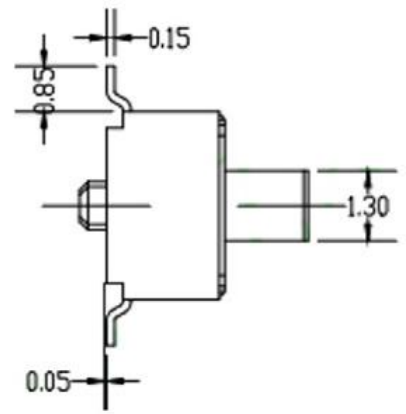
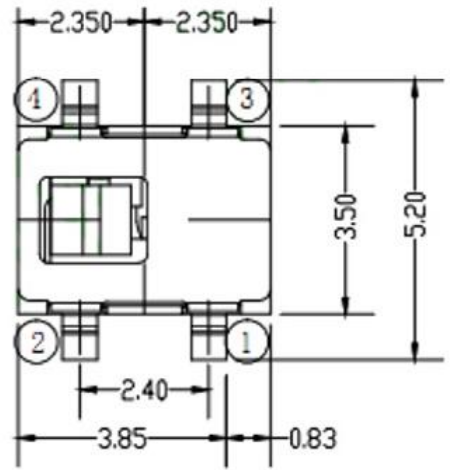
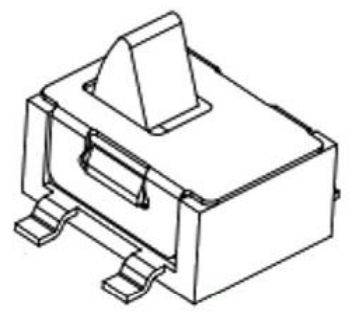


电路原理图



- 技术要求:
1. 额定负荷: DC 5V 0.1~1mA
  2. 绝缘电阻:  $\geq 100M\Omega$
  3. 耐电压: AC100V 50Hz/1min
  4. 电器寿命: 50000次
  5. 环境温度:  $-10^{\circ} \sim +60^{\circ}$
  6. 相对湿度:  $40^{\circ}C \leq 95\%$
  7. 接触电阻:  $\leq 100M\Omega$
  8. 接触行程: 0.3~0.6
  9. 动作力:  $\leq 0.3N(31gf)$

TITLE	MICRO DETECTOR SWITCH			DRAWN		TOLERANCE OTHERWISE UNLESS SPECIFIED		9								
PART NO.				CHECKED		UP TO 5	$\pm 0.2$	8								
DRAW NO.	M18			APPROVED		ABOVE 5 ~ 30	$\pm 0.3$	7								
SCALE	4:1	UNIT	mm	DATE	06-12-2001	ABOVE 30 ~ 50	$\pm 0.4$	6								
						ABOVE 50	$\pm 0.5$	5								
						ANGLE	$\pm 3'$	4	TERMINAL	BRASS	4	Ag PLATED OVER Ni PLATED				
												3	HOUSING	NYLON	1	BLACK\Ag PLATED OVER Ni PLATED
												2	COVER	NYLON	1	BLACK
												1	KNOB	NYLON	1	BLACK
												NO.	PARTS	MATERIAL	QTY.	FINISHING