

TL3701 SERIES TACT SWITCH

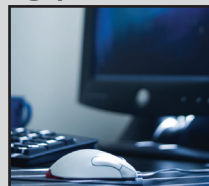
ANTI-VANDAL SWITCHES
 DETECTOR SWITCHES
 DIP SWITCHES
 KEYLOCK SWITCHES
 NAVIGATION SWITCHES
 PUSHBUTTON SWITCHES
 ROCKER SWITCHES
 ROTARY SWITCHES
 SLIDE SWITCHES
 SNAP ACTION SWITCHES
TACTILE SWITCHES
 TOGGLE SWITCHES
 CAP OPTIONS



APPLICATIONS / MARKETS



Wearable Electronics



Computer Peripherals



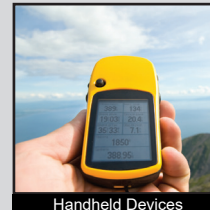
Consumer Electronics



Instrumentation



Telecommunication



Handheld Devices

RoHS

SPECIFICATIONS

Electrical Rating: 50mA @ 12VDC
Life Expectancy: up to 100,000 Cycles
Contact Resistance: 500mΩ Max.
Insulation Resistance: 100MΩ Min. at 500VDC
Dielectric Strength: 250VAC for 1 Minute
Operating Temperature: -40°C to 85°C Min.
Operating Force: 100gf and 160gf
Travel: 0.15mm
Function: SPST, Off-(On)

FEATURES & BENEFITS

- 3.0mm (W) x 2.6mm (L) x 0.65mm (H) dimensions
- Up to 100,000 cycle life expectancy
- 100gf and 160gf options

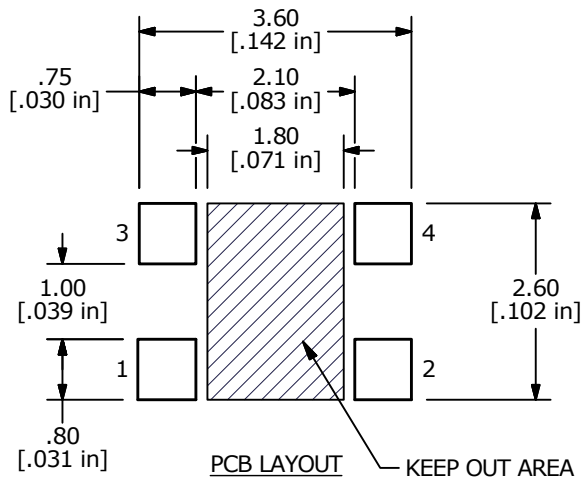
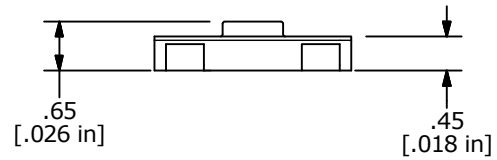
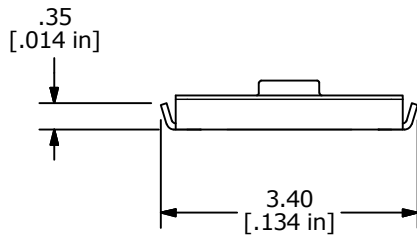
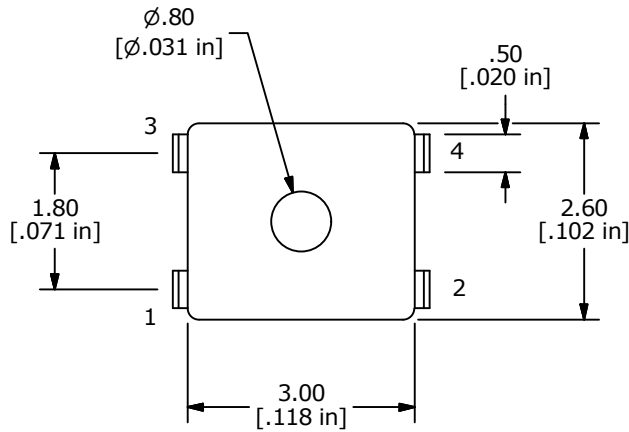
PART NUMBER CONFIGURATOR

Series	Model	Actuator Option	Actuation Force	Contact Material	Termination
TL	3701	A - 0.65mm	F100 - 100gf F160 - 160gf	Q - Silver	G

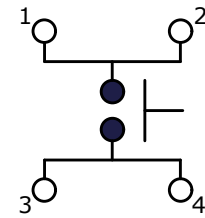
Specifications subject to change without notice 8.21.2019

TL3701 SERIES TACT SWITCH

BODY DIMENSIONS



SURFACE MOUNT PCB LAYOUT



CIRCUIT: SPST

SCHEMATIC