

TL6340 SERIES TACT SWITCH

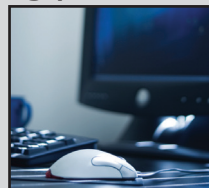
ANTI-VANDAL SWITCHES
 DETECTOR SWITCHES
 DIP SWITCHES
 KEYLOCK SWITCHES
 NAVIGATION SWITCHES
 PUSHBUTTON SWITCHES
 ROCKER SWITCHES
 ROTARY SWITCHES
 SLIDE SWITCHES
 SNAP ACTION SWITCHES
TACTILE SWITCHES
 TOGGLE SWITCHES
 CAP OPTIONS



APPLICATIONS / MARKETS



Wearable Electronics



Computer Peripherals



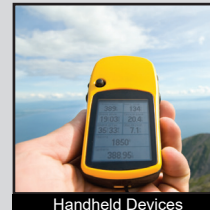
Consumer Electronics



Instrumentation



Telecommunication



Handheld Devices

RoHS

SPECIFICATIONS

Contact Arrangement: SPST
Contact Rating: 12VDC, 20mA
Contact Resistance: 100mOhms
Insulation Resistance: 100MOHMS @ 100VDC
Dielectric Strength: 250VAC for 1 Minute
Operation Life: 200,000 Cycles
Operating Temperature: -40°C to +85°C
Storage Temperature: -40°C to +85°C
Moisture Protection: IP67
Travel: 0.2mm
Actuation Force: 160gf

FEATURES & BENEFITS

- SPST contact arrangement
- 2.90mm (W) x 3.85mm (L) x 2.00mm (H) dimensions
- Up to 200,000 cycle life expectancy
- IP67 moisture and dust protection
- Right angle surface mount design

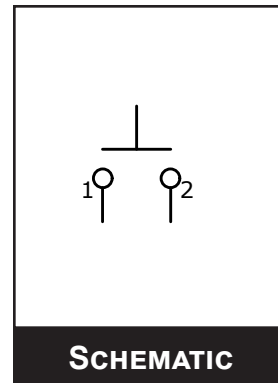
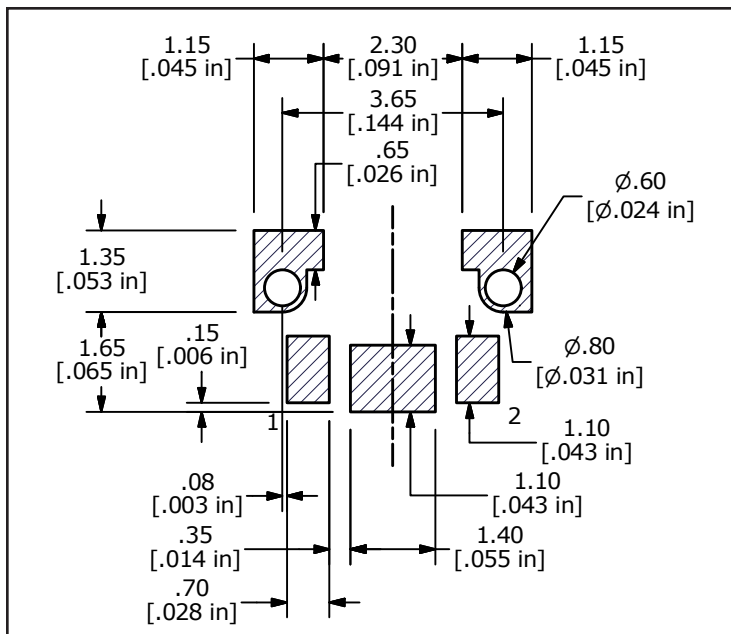
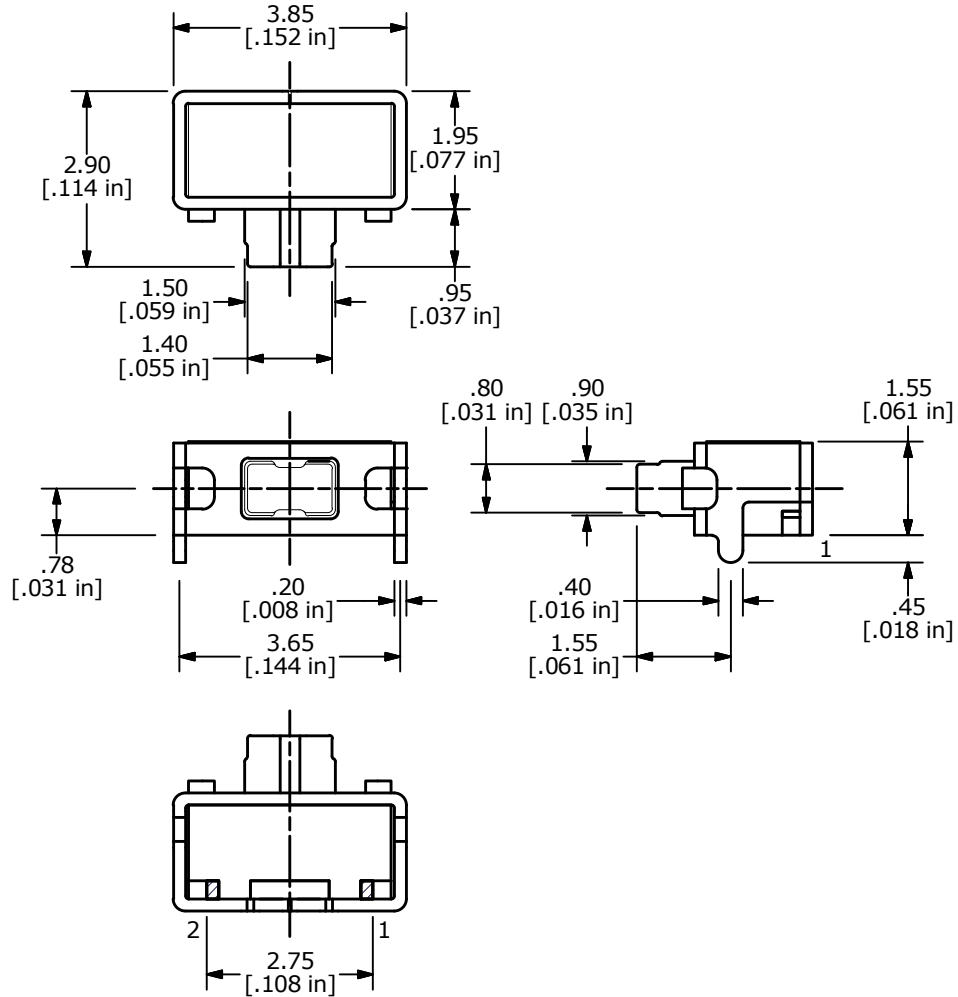
PART NUMBER CONFIGURATOR

Series	Model	Actuator Option	Actuation Force	Contact Material
<input type="text" value="TL"/>	<input type="text" value="6340"/>	<input type="text" value="A - 1.50mm"/>	<input type="text" value="F160 - 160gf"/>	<input type="text" value="Q - Silver"/>

Specifications subject to change without notice 10.23.2019

TL6340 SERIES TACT SWITCH

BODY DIMENSIONS



SCHEMATIC

RECOMMENDED SURFACE MOUNT PCB LAYOUT