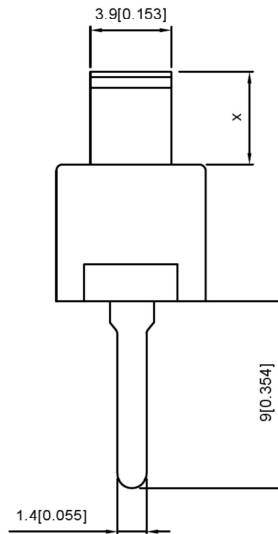
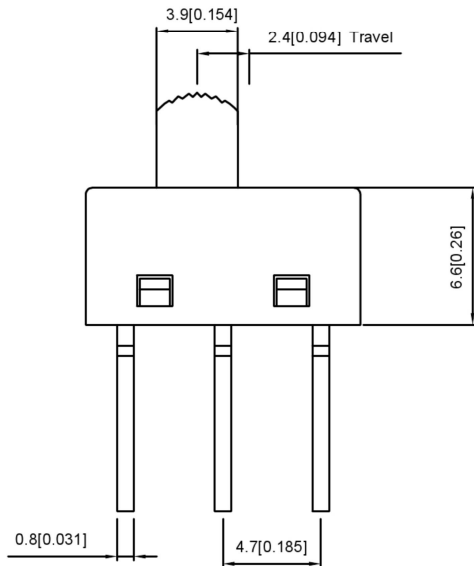
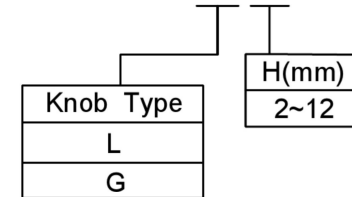


Specification:

1. Rating: 6A 120VAC
2. Contact resistance: $\leq 30 \text{ m}\Omega$
3. Insulation resistance: $\geq 100 \text{ M}\Omega$ (DC 500V/Min)
4. Electronics life: > 10000 cycles
5. Operation force: $250 \pm 100 \text{ gf}$



SS-12M10 X X



Function		
ON	NA	ON
	/	

7	Terminal	1	Phosphor bronze	Plating silvering
6	Bridge piece	1	Phosphor bronze	Plating silvering
5	Spring	1	carbon steel	
4	Rotor	1	Iron sleeve	NI
3	Base	1	PA46	
2	Shell	1	PA46	
1	Keystake	1	PA66	
ITEM	PAPT NAMF	QTY	MATERIAL	FINISHING

				ANGULAR	$\pm 5^\circ$	DSND		SCALE: N/A	MODEL TYPE:	SLIDE SWITCH		
				L ≤ 4	± 0.2	DWN		VIEW:	PART NO.:	SS-12M10XX		
				4 < L ≤ 16	± 0.3	CHKD		UNIT: mm/in	DWG NO.:			
				16 < L ≤ 63	± 0.4	APPD		SIZE: A4				
				L > 63	± 0.5					WEIGHT	SHEET	REVISION
REVISIONS				UNSPECIFIED TOLERANCES		KE SI DA ELECTRONIC TECHNOLOGY CO., LTD				1/1	A0	
WWW.BODONGKAIGUAN.NET				WWW.CKJACK.COM		WWW.KSDKG.COM						