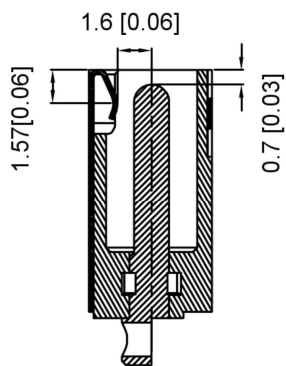
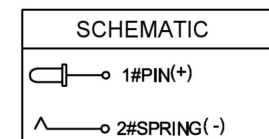
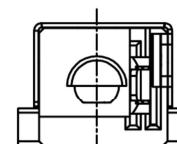
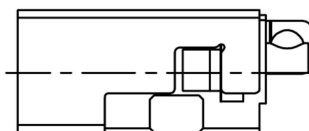
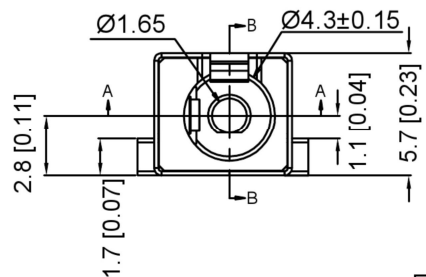
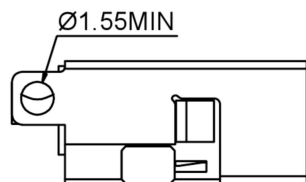
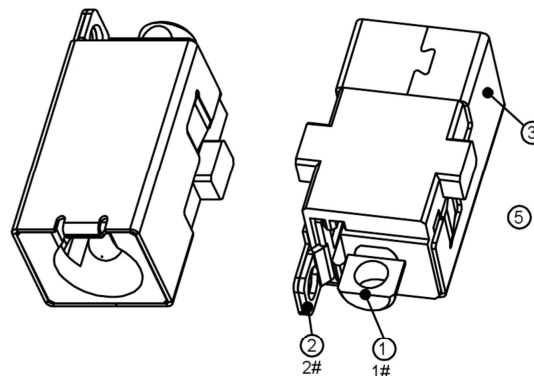
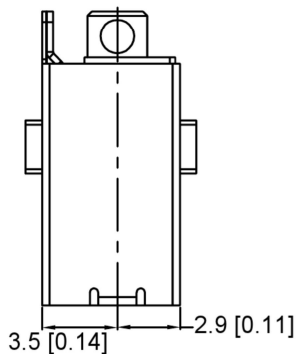
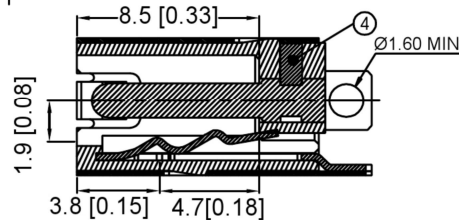
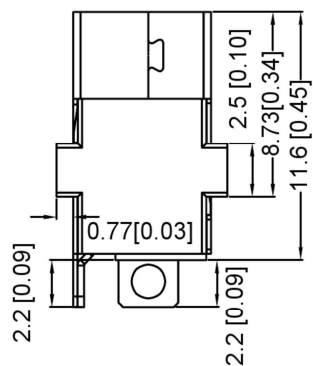


MATING PLUG



SECTION B-B



SECTION A-A

SPECIFICATION

1. Rating : DC 12V 3A;
2. Contact resistance: <0.03Ω;
3. Insulation resistance: 100MΩ (DC250V);
4. Withstand voltage: 500VAC;
5. Insertion and extraction force: 5-30N;
6. life test: 5,000 cycles.

7. PLUG 插入后上下左右4个方向无瞬断现象

	MATERIAL	PLATING
center pin	Brass	ag
coat	Phosphor Bronze	ni
terminal 2	Phosphor Bronze	ag
plastic	Lcp	

REVISIONS				ANGULAR	±5°
DATE	REVISED	APPROVED		L ≤ 4	±0.2
				4 < L ≤ 16	±0.3
				16 < L ≤ 63	±0.4
				L > 63	±0.5
				UNSPECIFIED TOLERANCES	
WWW.BODONGKAIGUAN.NET				WWW.CKJACK.COM	
WWW.KSDKG.COM					



DSND		SCALE: N/A	MODEL TYPE: DC POWER JACK
DWN		VIEW:	PART NO.: DC-042F-3A-1.65
CHKD		UNIT: mm/in	DWG NO.:
APPD		SIZE: A4	
KE SI DA ELECTRONIC TECHNOLOGY CO., LTD			WEIGHT
			SHEET
			REVISION
			1/1
			A0