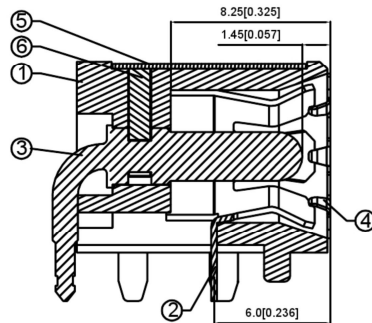
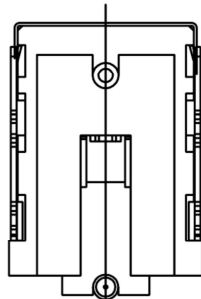
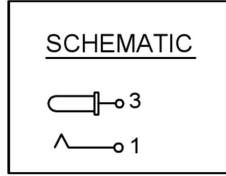
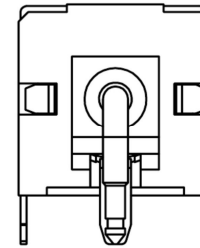
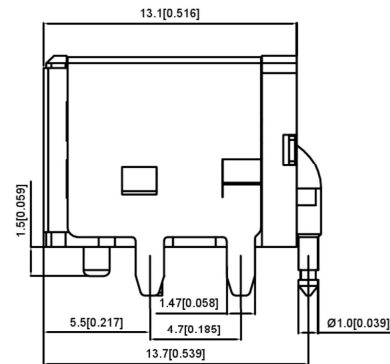
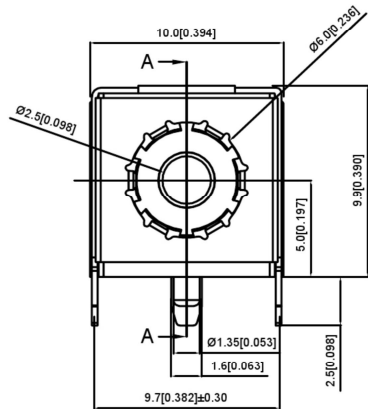
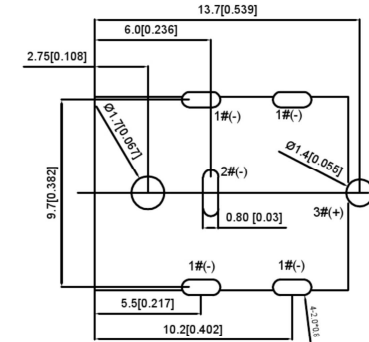


P.C.B LAYOUT



剖面 A-A

SPECIFICATION

规范

1. Rating : DC 20V 10A;
额定值 : DC 20V 10A;
2. Contact resistance: 0.03Ω;
接触电阻 : 0.03Ω;
3. Insulation resistance: ≥100MΩ (DC250V)
绝缘电阻 : ≥100MΩ (DC250V)
4. Withstand voltage: 500V AC
耐压 : 500V AC
5. Insertion and extraction force: 5-40N
插拔力 : 5-40N
6. life test: 5,000 cycles.
寿命试验 : 5,000次循环。

				ANGLAR	±5°	 SWITCH CONNECTOR	DSND		SCALE: N/A	MODEL TYPE: DC POWER JACK		
				L ≤ 4	±0.2		DWN		VIEW:	PART NO.:	DC-042C-Z-2.5-A	
				4 < L ≤ 16	±0.3		CHKD		UNIT: mm/in	DWG NO.:		
				16 < L ≤ 63	±0.4		APPD		SIZE: A4			
				L > 63	±0.5						WEIGHT	SHEET
REVISIONS				UNSPECIFIED TOLERANCES		KE SI DA ELECTRONIC TECHNOLOGY CO., LTD				1/1	A0	
DATE				REVISED	APPROVED	WWW.BODONGKAIGUAN.NET				WWW.CKJACK.COM		
						WWW.KSDKG.COM						