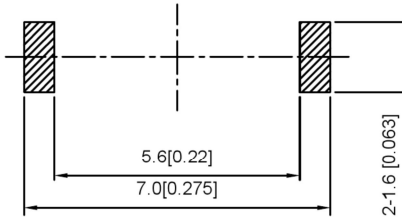
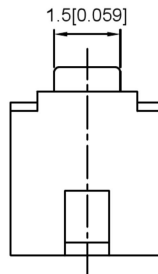
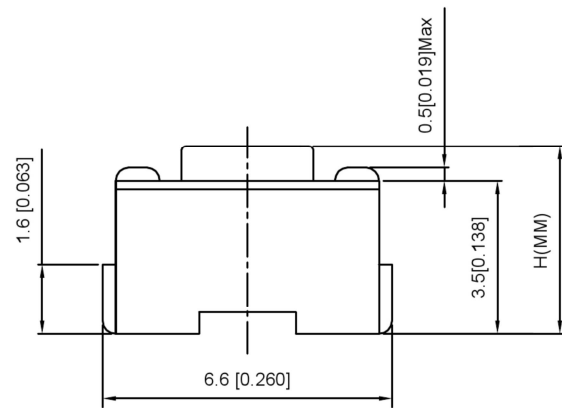


P.C.B Mounting
Pattern Dimension



SPECIFICATION

Contact Rating: 50mA, 12V DC
 Contact Resistance: 100mΩ max
 Insulation Resistance: 100mΩ min. 500V DC
 Dielectric Strength: 250V AC/1minute
 Travel: 0.25mm
 Operating Temp: -20°C ~ +70°C
 Storage Temp: -30°C ~ +80°C



Circuit diagram



PAPT NO	TS-1101NH-X-X-X
Operating Force	A:100gf B:160gf C:260gf
Height	H:A:4.3 B:5.0 C:6.0 D:7.0
colour	B:black W:white

ITEM	PAPT NAM	TER,NO	QTY	MATERIAL	FINISHING	REMARK
⑤	Terminal	—	2	Brass (0.30t)	Plating silvering	—
④	Contact	—	1	F.ag/Sus	Natural	—
③	Base	—	1	Lcp	—	—
②	Cover	—	1	Spcc	Plating Nickel	—
①	Keystake	—	1	Pa46	—	—

				ANGLAR	±5°		DSND		SCALE: N/A	MODEL TYPE: TACT SWITCH	
				L ≤ 4	±0.2		DWN		VIEW:	PART NO.: TS-1101NH-X-X-X	
				4 < L ≤ 16	±0.3		CHKD		UNIT: mm/in	DWG NO.:	
				16 < L ≤ 63	±0.4		APPD		SIZE: A4		
				L > 63	±0.5						
				DATE	REVISED	APPROVED	UNSPECIFIED TOLERANCES				
WWW.BODONGKAIGUAN.NET WWW.CKJACK.COM WWW.KSDKG.COM				KE SI DA ELECTRONIC TECHNOLOGY CO., LTD				WEIGHT	SHEET	REVISI	
									1/1	A0	