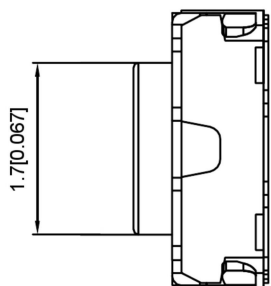
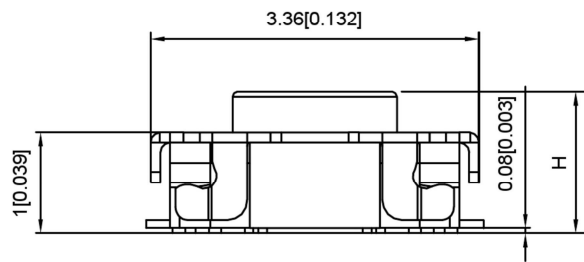


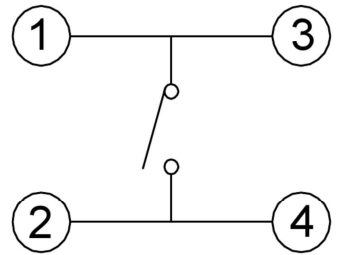
SPECIFICATION

Contact Rating:	50mA, 12V DC
Contact Resistance:	100mΩ max
Insulation Resistance:	100mΩ min. 500V DC
Dielectric Strength:	250V AC/1minute
Travel:	0.12mm
Operating Temp:	-30°C ~ +85°C
Storage Temp:	-30°C ~ +80°C

PCB LAYOUT DIMENSIONS



PAPT NO	TS-3027-X
Operating Force	B:160gf C:250gf
Height	H:1.4



⑤	Terminal	—	4	Brass (0.30t)	Plating silvering	——
④	Contact	—	1	F. ag/Sus	Natural	——
③	Base	—	1	LCP		——
②	Cover	—	1	SUS	Plating Nickel	——
①	Keystake	—	1	LCP		——
ITEM	PAPT NAME	TER,NO	QTY	MATERIAL	FINISHING	REMARK

					ANGLAR	±5°	<p>KE SI DA ELECTRONIC TECHNOLOGY CO., LTD</p>		DSND		SCALE: N/A	MODEL TYPE: TACT SWITCH			
					L ≤ 4	±0.2			DWN		VIEW:	PART NO.:			
4 < L ≤ 16	±0.3	CHKD		UNIT: mm/in	TS-3027-X										
16 < L ≤ 63	±0.4	APPD		SIZE: A4	DWG NO.:										
				L > 63	±0.5			<table border="1" style="width: 100%;"> <tr> <td>WEIGHT</td> <td>SHEET</td> <td>REVISI</td> </tr> <tr> <td></td> <td>1/1</td> <td>A0</td> </tr> </table>		WEIGHT	SHEET	REVISI		1/1	A0
WEIGHT	SHEET	REVISI													
	1/1	A0													
DATE	REVISED	APPROVED	UNSPECIFIED TOLERANCES												
WWW.BODONGKAIGUAN.NET WWW.CKJACK.COM WWW.KSDKG.COM															