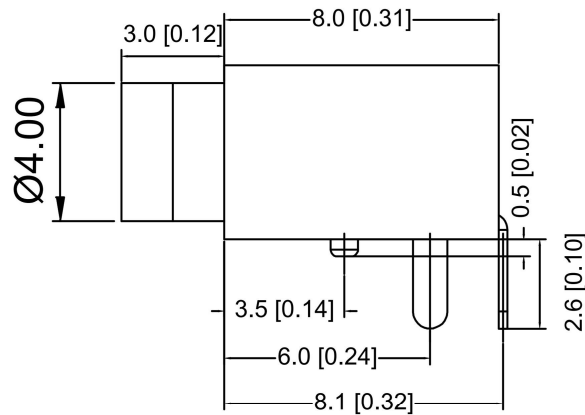
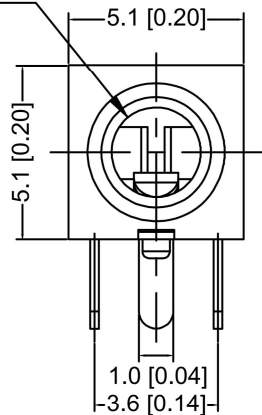


Ø2.6±0.05



NOTES:

1.ELECTRICALCHARACTERS:

1-1.RATING:DC 30V 0.5A:

1-2.CONTATCT RESISTANCE:<30mΩ;

1-3.INSULATION RESISTANCE:>100MΩ

DC500V;

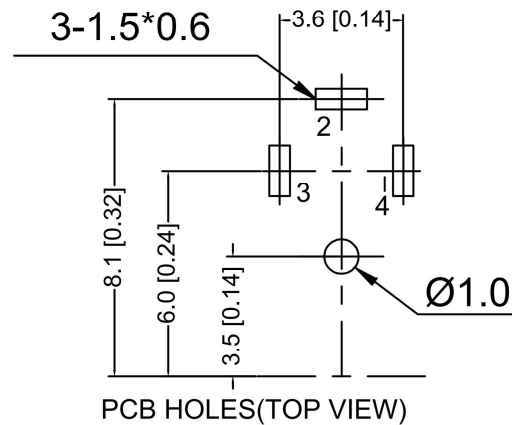
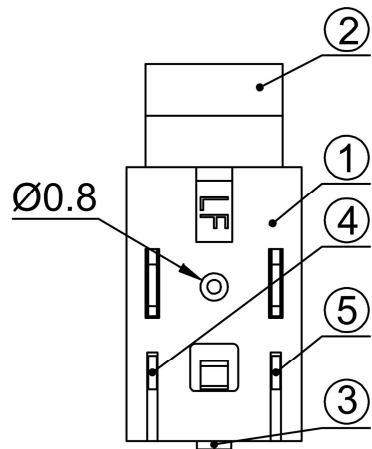
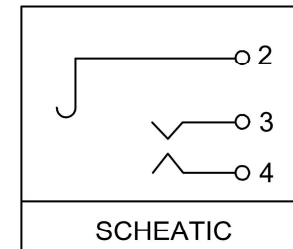
1-4.WITHSTANDING VOLTAGE:AC 500V 1min;

1-5.LIFE:5.000CYCLES:

2.MECHANICALCHARACTERISTICS:

2-1.INSERTION&EXTRACTION FORCE:3~30N:

2-2.OPERATING TEMPERATURE:-30°C~+70°C:



GENERAL TOLERANCE:0.1MM

⑤	TERMINAL	4	1	Manganese steel t=0.25	SnSb	PLATED
④	TERMINAL	3	1	Manganese steel t=0.25	SnSb	PLATED
③	TERMINAL	2	1	Manganese steel t=0.25	SnSb	PLATED
②	AXLE SLEEVE	1		H59	CuSn	PLATED
①	HOUSING	1		PA66		BLACK

				ANGLAR	±5°	 KSD SWITCH CONNECTOR	DSND		SCALE: N/A	MODEL TYPE: 2.5 PHONE JACK		
				L ≤ 4	±0.2		DWN		VIEW:	PART NO.: PJ-210A		
				4 < L ≤ 16	±0.3		CHKD		UNIT: mm/in	DWG NO.:		
				16 < L ≤ 63	±0.4		APPD		SIZE: A4			
REVISIONS				DATE	REVISED	APPROVED				WEIGHT	SHEET	REVISION
UNSPECIFIED TOLERANCES											1/1	A0
WWW.BODONGKAIGUAN.NET				WWW.CKJACK.COM		WWW.KSDKG.COM		KE SI DA ELECTRONIC TECHNOLOGY CO., LTD				