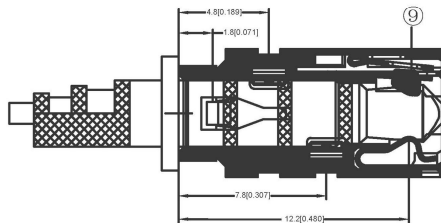
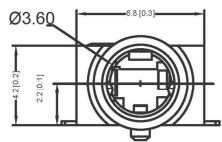
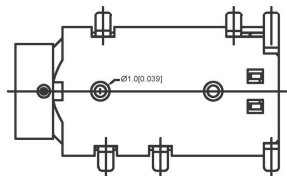
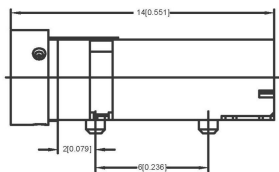
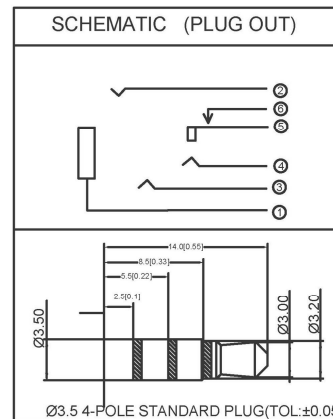
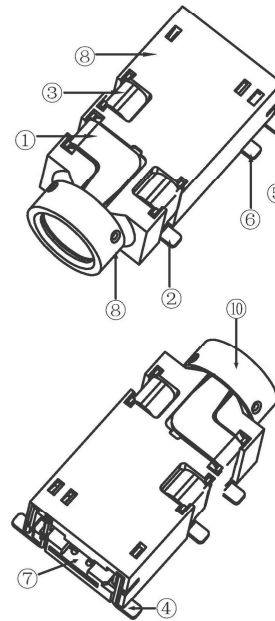


RECOMMENDED PCB LAYOUT



接触点示意图



NOTES:

注释:

1.ELECTRICALCHARACTERS:

电气特性:

1.1 RATED VOLTAGE: 5 VDC

额定电压: 5 VDC

1.2 RATED CURRENT: 0.5A MAX PER CONTACT AT 30° T-RISE

额定电流: 0.5A MAX PER CONTACT AT 30° T-RISE

1.3 CONTACT RESISTANCE: 70 MILLIOHMS MAX.

接触电阻: 70 MILLIOHMS MAX.

1.4 INSULATION RESISTANCE: 100 MEGAOHMS MIN

绝缘电阻: 100 MEGAOHMS MIN

1.5 DIELECTIC WITHSTANDING VOLTAGE: 500V AC AT SEA LEVEL

绝缘耐受电压: 500V AC AT SEA LEVEL

2.MECHANICAL CHARACTERISTICS:

机械特性:

2.1 INSERTION FORCE: 20N MAX.(INITIAL)

20N MAX.(AFTER 5000 CYCLES DURABILITY TEST)

插入力: 最大20N (初始)

最大20N (5000次循环耐久性试验后)

2.2 WITHDRWAL FORCE: 12±5N (INITIAL)

9±5N(AFTER 5000 CYCLES DURABILITY TEST)

牵引力: 12±5N (初始)

9±5N (5000次循环耐久性试验后)

2.3 DURABILITY:5000 CYCLES

耐久性: 5000次循环

3.ENVIRONMENTAL CHARACTERISTICS:

环境特征:

3.1 OPERATING TEMPERATURE: -30°TO+85°

工作温度: -30°至+85°

3.2 STORAGE TEMPERATURE: -40°TO+85°

贮存温度: -40°至+85°

4.PACKAGE: TAPE RELL

包装: 胶带

		MATERIAL	PLATING
10	RING	BRASS	
9	INSERT MOLDING	1 PA9T	BLACK
8	HOUSING	1 PA9T	BLACK
7	7# CONTACT FOOT	1 STAINLESS STEEL PLATE	
6	6# CONTACT FOOT	1 COPPER ALLOY	Au-Plating
5	5# CONTACT FOOT	1 COPPER ALLOY	Au-Plating
4	4# CONTACT FOOT	1 COPPER ALLOY	Au-Plating
3	3# CONTACT FOOT	1 COPPER ALLOY	Au-Plating
2	2# CONTACT FOOT	1 COPPER ALLOY	Au-Plating
1	1# CONTACT FOOT	1 COPPER ALLOY	Au-Plating

REVISIONS				DATE	REVISED	APPROVED	UNSPECIFIED TOLERANCES	DSND	SCALE: N/A	MODEL TYPE:	WEIGHT	SHEET	REVISION
										3.5 PHONE JACK			
										PART NO.:			
										PJ-3701-SMT			
										DWG NO.:			
										SIZE: A4			
								KE SI DA ELECTRONIC TECHNOLOGY CO., LTD					

