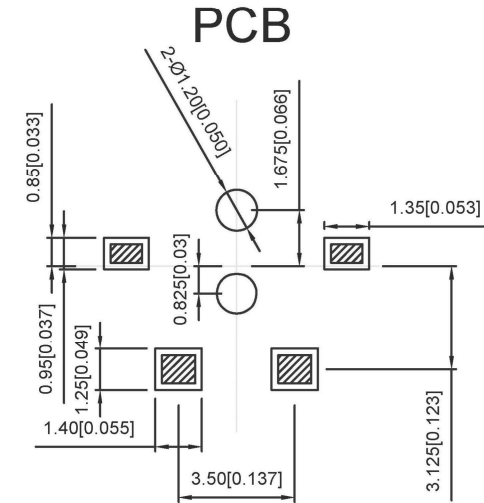
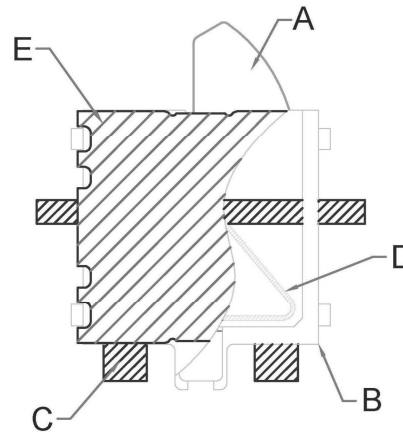
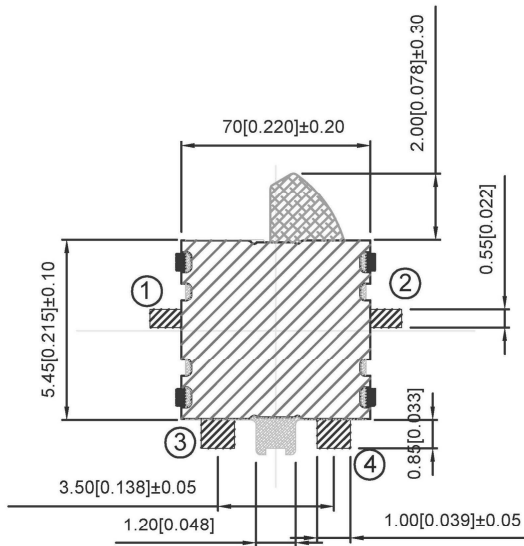


Rated range: 50mA DC12V
 Insulation resistance: ≥100MΩmin (DC100V)
 Contact resistance: ≤300mΩ
 Compressive strength: AC100V (50/60Hz foy 1 minute)
 Mechanical life: 50000 cycles
 Operating temperature: -10°C ~ +60°C
 Operation strength: 50±30gf



E	lid	1	SUS	silvery white
D	Shrapnel	1	Silver copper	silvery white
C	Solder patch	1	Phosphor bronze	silvery white
B	base	1	PA66	black
A	Button	1	PA66	black
ITEM	PAPT NAMF	QTY	Material	colour

				ANGLAR	±5°	 SWITCH CONNECTOR	DSND		SCALE: N/A	MODEL TYPE: DETECT SWITCH			
				L ≤ 4	±0.2		DWN		VIEW:	PART NO.: TM-1627A			
				4 < L ≤ 16	±0.3		CHKD		UNIT: mm/in	DWG NO.:			
				16 < L ≤ 63	±0.4		APPD		SIZE: A4				
				L > 63	±0.5								
REVISIONS						UNSPECIFIED TOLERANCES	KE SI DA ELECTRONIC TECHNOLOGY CO., LTD			WEIGHT	SHEET	REVISION	
DATE						REVISD	APPROVED					1/1	A0
WWW.BODONGKAIGUAN.NET						WWW.CKJACK.COM	WWW.KSDKG.COM						