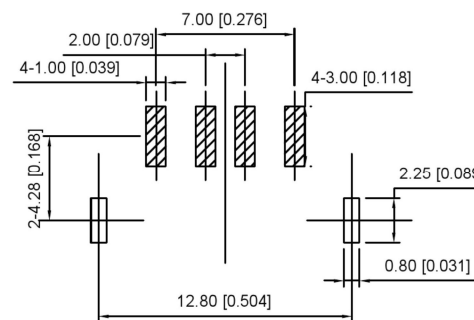
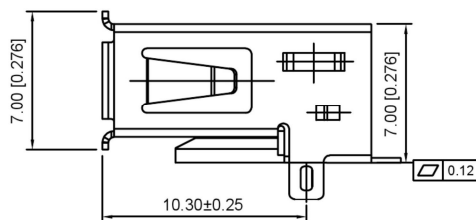
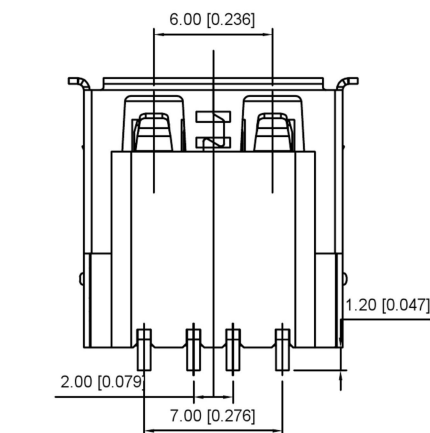


U221-04XN-4BVS70-S1



RECOMMEND P.C.B. LAYOUT

NOTES:

- 材料规格 MATERIAL SPECIFICATION:
 - 胶壳 HOUSING MATERIAL:BLACK LCP ROHS;
 - 外壳 SHELL MATERIAL:SPCC T=0.30
电镀 PLATING:NICKE;
 - 端子 TERMINAL: C5191 T=0.25
电镀 PLATING:SEMI GOLD TIN G/F;
- 电气特性 ELECTRICAL CHARACTERISTIC:
 - 绝缘电阻 INSULATION RESISTANCE: 1000MΩ MIN;
 - 接触电阻 CONTACT RESISTANCE: 30mΩ MAX;
 - 耐压 WITHSTANDING VOLTAGE: 500V AC;
- 机器特性 MECHANICAL CHARACTERISTICS:
 - 插入力 INSERTION FORCE:3.57Kgf Max;
 - 拔出力 EXTRACTION FORCE:1.02Kgf Min;

				ANGLAR	±5°	DSND		SCALE: N/A	MODEL TYPE:	USB 2.0			
				L ≤ 4	±0.2	DWN		VIEW:	PART NO.:				
				4 < L ≤ 16	±0.3	CHKD		UNIT: mm/in	DWG NO.:				
				16 < L ≤ 63	±0.4	APPD		SIZE: A4	U221-04XN-4BVS70-S1				
				L > 63	±0.5					WEIGHT	SHEET	REVISION	
DESCRIPTION				DATE	REVISED	APPROVED	UNSPECIFIED TOLERANCES						
REVISIONS								KE SI DA ELECTRONIC TECHNOLOGY CO., LTD				1/1	A0
WWW.BODONGKAIGUAN.NET				WWW.CKJACK.COM				WWW.KSDKG.COM					

KSD
SWITCH CONNECTOR

KE SI DA ELECTRONIC TECHNOLOGY CO., LTD