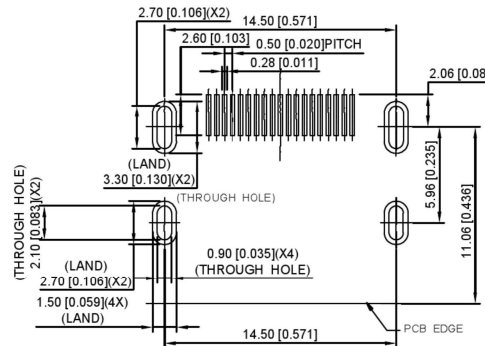
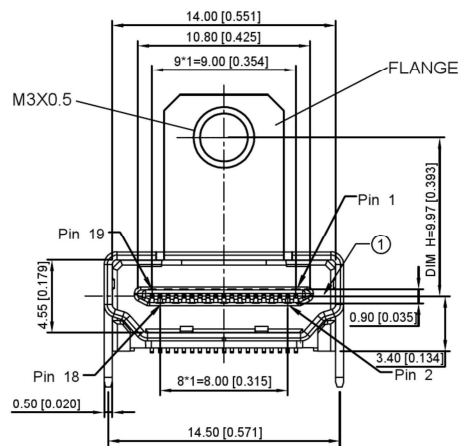


**SPECIFICATIONS**

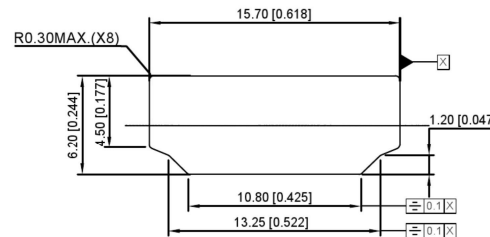
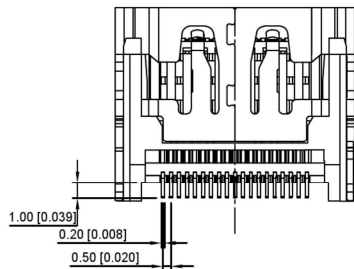
1. OPERATING CURRENT: 0.5A MAX.
2. OPERATION TEMPERATURE: -25°C TO +85°C
3. DIELECTRIC WITHSTANDING VOLTAGE:  
500Volts AC BETWEEN ADJACENT TERMINAL (UNMATE)  
300Volts AC BETWEEN ADJACENT TERMINAL (MATE)
4. INSULATION RESISTANCE:  
100Mohm MIN (UNMATED); 10Mohm MIN. (MATED)
5. HDMI SPECIFICATION COMPLIANCE



**A71-05H3-1X1N1**

- 1: Au 1U"
- 5: Au 15U"
- 6: Au 30U"

RECOMMENDED P.C.B LAYOUT (T:1.20mm)  
TOLERANCE UNSPECIFIED ±0.05mm



REFERENCE PANEL CUT OUT DIMENSION

3	CONTACTS	19	COPPER ALLOY, GOLD PLATED OVER NICKEL ON CONTACT AREA AND 100u" MIN. TIN PLATED OVER NICKEL ON SOLDER TAILS
2	HOUSING	1	THERMOPLASTIC UL94V-0
1	SHELL	1	COPPER ALLOY, NICKEL PLATED

				ANGULAR	±5°	<b>KSD</b>	DSND	SCALE: N/A	MODEL TYPE: HDMI CONNECTOR
				L ≤ 4	±0.2		DWN	VIEW:	PART NO.:
				4 < L ≤ 16	±0.3		CHKD	UNIT: mm/in	A71-05H3-1X1N1
				16 < L ≤ 63	±0.4		APPD	SIZE: A4	DWG NO.:
				L > 63	±0.5	SWITCH CONNECTOR		A71-05H3-1X1N1	
REVISIONS				UNSPECIFIED TOLERANCES		KE SI DA ELECTRONIC TECHNOLOGY CO., LTD	WEIGHT	SHEET	REVISION
WWW.BODONGKAIGUAN.NET    WWW.CKJACK.COM    WWW.KSDKG.COM								1/1	A0