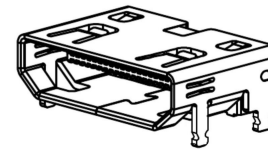


# A71-05H3-1X1N1

1:Au 1U"  
5:Au 15U"  
6:Au 30U"



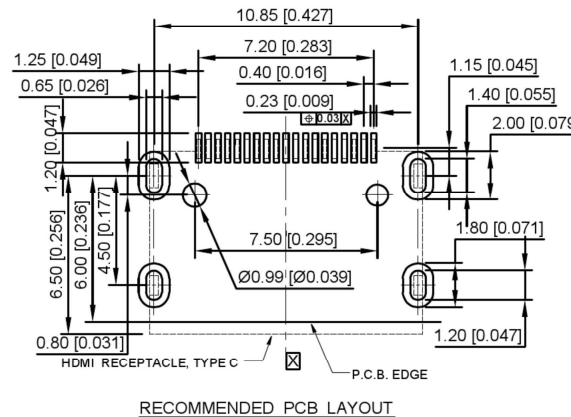
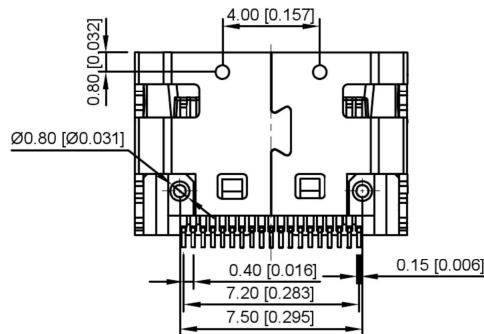
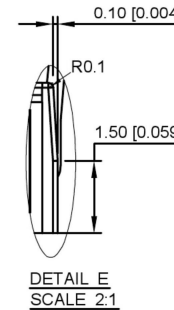
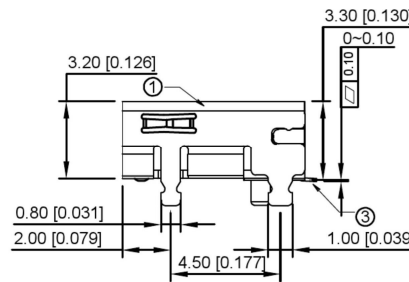
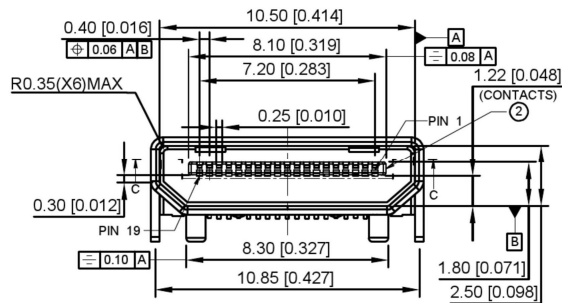
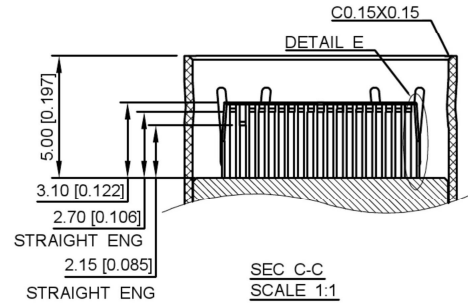
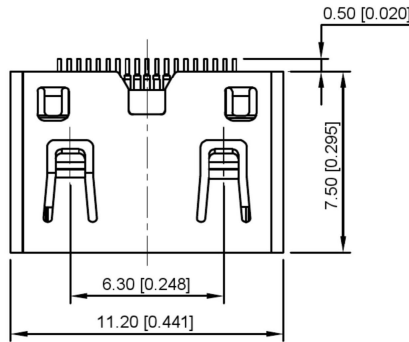
**NOTE:**

**1.MECHANICAL:**

- 1.1 INSERTION FORCE:45Kgf MAX
- 1.2 WITHDRAW FORCE:0.71Kgf~2.55Kgf

**2.ELECTRICAL:**

- 2.1 CONTACT CURRENT RATING:0.5A MAX
  - 2.2 VOLTAGE RATING:40V AC(RMS)
  - 2.3 DIELECTRIC WITH STANDING VOLTAGE:  
500V AC FOR 1 MINUTE
  - 2.4 INSULATION RESISTANCE:100 MEGAOHMS MIN
  - 2.5 CONTACT RESISTANCE:30 MILLIOHMS MAX
- 3.ENVIRONMENTAL:**
- 3.1 OPERATING TEMPERATURE:-25~+85



3	CONTACTS	19	COPPER ALLOY,GOLD PLATED OVER NICKEL ON CONTACT AREA AND 100u" MIN.TIN PLATED OVER NICKEL ON SOLDER TAILS
2	HOUSING	1	THERMOPLASTIC UL94V-0
1	SHELL	1	COPPER ALLOY,NICKEL PLATED

				ANGULAR	±5°	<b>KSD</b>	DSND	SCALE: N/A	MODEL TYPE:	HDMI CONNECTOR	
				L ≤ 4	±0.2		DWN	VIEW:	PART NO.:		
				4 < L ≤ 16	±0.3		CHKD	UNIT: mm/in	DWG NO.:		
				16 < L ≤ 63	±0.4		APPD	SIZE: A4	A71-05H4-1X1N1		
REVISIONS				UNSPECIFIED TOLERANCES		SWITCH CONNECTOR			WEIGHT	SHEET	REVISION
DATE				REVISED	APPROVED					1/1	A0
WWW.BODONGKAIGUAN.NET				WWW.CKJACK.COM	WWW.KSDKG.COM	KE SI DA ELECTRONIC TECHNOLOGY CO., LTD					