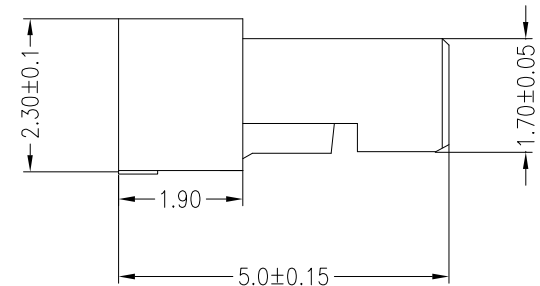
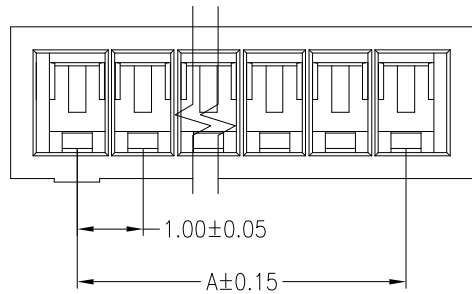
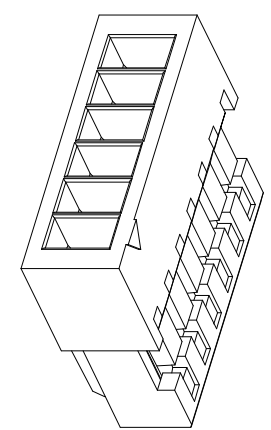
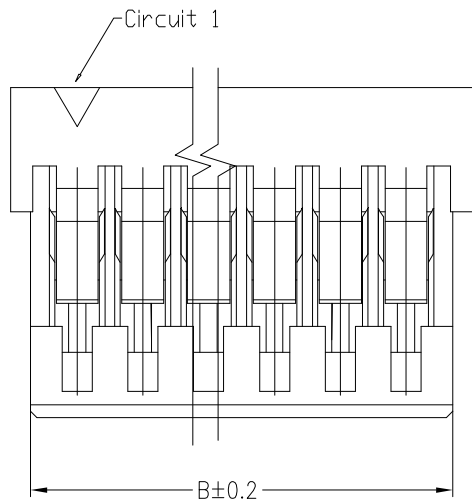


REV	DESCRIPTION	DESIGN	DATE
A0	NEW RELEASE	Steven	2019/05/09

线数 (N)	尺寸 mm	
	A	B
2	1.00	2.40
3	2.00	3.40
4	3.00	4.40
5	4.00	5.40
6	5.00	6.40
7	6.00	7.40
8	7.00	8.40
9	8.00	9.40
10	9.00	10.40
11	10.00	11.40
12	11.00	12.40
13	12.00	13.40
14	13.00	14.40
15	14.00	15.40



Specifications:  
 Poles: 02 to 15  
 Contact resistance:  $\leq 20m\Omega$   
 Insulation resistance:  $\geq 100M\Omega$   
 Rated voltage: 125V AC DC  
 Rated current: 1.0A AC DC  
 Withstand Voltage: 500V AC/minute  
 Temperature Range:  $-25^{\circ}C \sim +85^{\circ}C$   
 Housing: PA66 UL94V-0, Natural



ORDER INFORMATION:

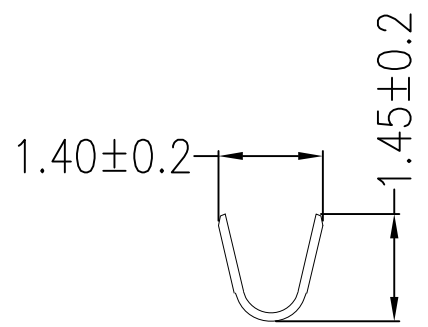
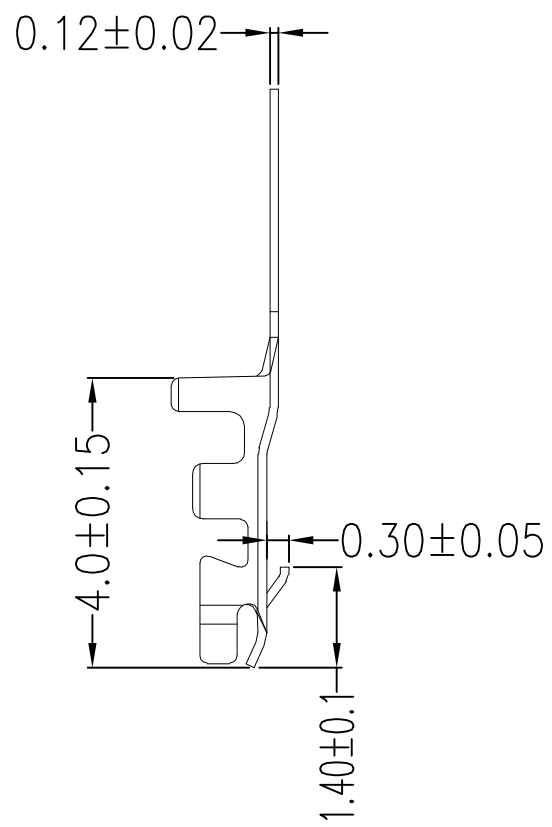
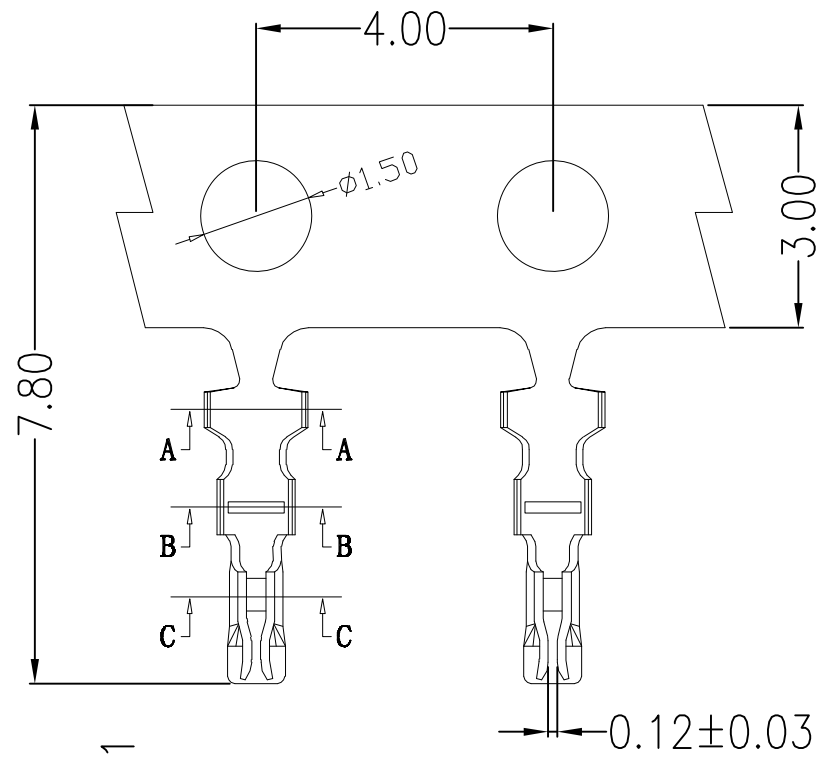
A1003Y-\*\*-A5W-P

PART No. \_\_\_\_\_  
 No.OF CIRCUITS: \_\_\_\_\_  
 \*\* \_\_\_\_\_  
 PLASTIC MATERIAL: \_\_\_\_\_  
 A5W=PA66(WHITE)

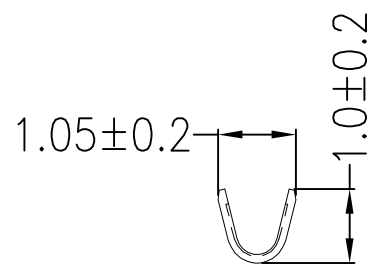
PACKAGING:  
 P=PE

<b>广东科斯达电子科技有限公司</b> GUANG DONG KE SI DA ELECTRONIC TECHNOLOGY CO., LTD.		TITLE: 1.0 Pitch HOUSING	
GENERAL TOLERANCE X. $\pm 0.50$ X. $\pm 5'$ X.X $\pm 0.30$ X.X $\pm 2'$ X.XX $\pm 0.20$ X.XX $\pm 1'$		PART NO.: A1003Y-**-A5W-P	
USE: CUSTOMER APPD: Wangliang CHKD: Zenglingqing		DWG NO.: GCCP-0850	
UNITS: mm		DR: Steven	
		SCALE 1 : 1	
		SHEET 1 / 1	

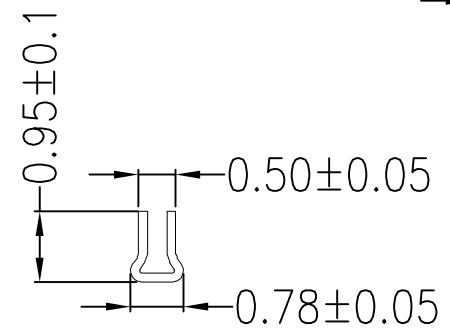
REV	ECN No.	DESCRIPTION	DESIGN	DATE
A0		Release	蒋建银	2018.05.30



Section A-A


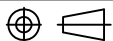


Section B-B

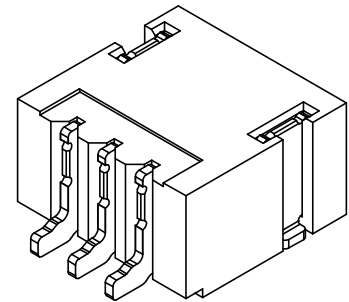
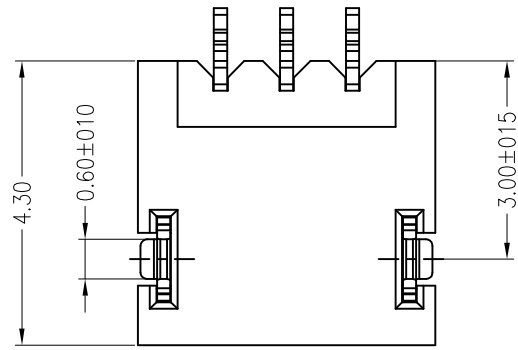


Section C-C

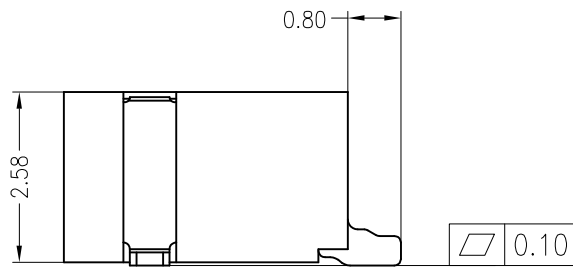
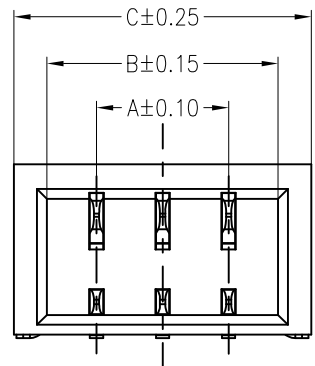
Ordering Information & Specification:

Part No	Wire Range	Insulation O.D.	Material	Finish	Qty/Reel
A1003T-PA	AWG #28~#32	0.4~0.8mm	Phosphor bronze	Sn-plated	
 <b>广东科斯达电子科技有限公司</b> GUANG DONG KE SI DA ELECTRONIC TECHNOLOGY CO., LTD.				TITLE: NH-T 端子	
X.±0.1	X.±1'	USE:	MANUFACTURE		
.X±0.05	.X±0.5'	APPD:	刘振岭		
.XX±0.01	.XX±0.1'	CHKD:	王亮		
.XXX±0.005	.XXX±0.05'	DR:	蒋建银		
 UNITS: mm		SCALE	SHEET		
		1 : 1	1 / 1		

REV	DESCRIPTION	DESIGN	DATE
A0	NEW RELEASE	Steven	2019/09/18

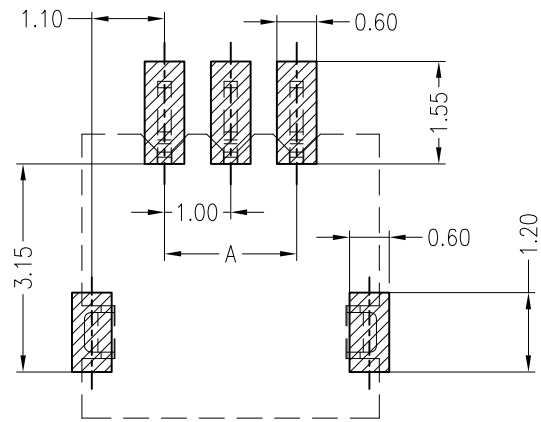


**Specifications:**  
 Poles: 02 to 20  
 Contact resistance:  $\leq 20m\Omega$   
 Insulation resistance:  $\geq 100M\Omega$   
 Rated voltage: 125V AC DC  
 Rated current: 1.0A AC DC  
 Withstand Voltage: 500V AC/minute  
 Temperature Range:  $-25^{\circ}C \sim +85^{\circ}C$   
 Housing: PA6T UL94V-0, Natural  
 Contacts: Phosphor Bronze/Matte Sn-plated  
 Solder Tabs: Brass/Matte Sn-plated



**ORDER INFORMATION:**  
**A1003AWR-\*\*-C1MB1-R**

PART No.	PACKAGING:
No.OF CIRCUITS:	R=REEL
PLASTIC MATERIAL:	P=PE
	Metgl. code:
	1=Phosphor Bronze
	PLATING:
	B=MATTE Sn



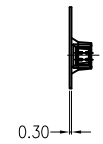
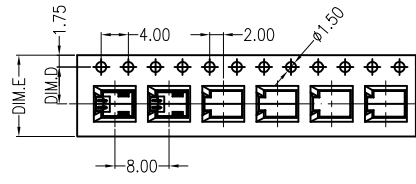
PCB LAYOUT(Tolerance:±0.05)

孔位	尺寸	A	B	C	孔位	尺寸	A	B	C
2P		1.00	2.50	3.50	12P		11.00	12.5	13.5
3P		2.00	3.50	4.50	13P		12.00	13.5	14.5
4P		3.00	4.50	5.50	14P		13.00	14.5	15.5
5P		4.00	5.50	6.50	15P		14.00	15.5	16.5
6P		5.00	6.50	7.50	16P		15.00	16.5	17.5
7P		6.00	7.50	8.50	17P		16.00	17.5	18.5
8P		7.00	8.50	9.50	18P		17.00	18.5	19.5
9P		8.00	9.50	10.5	19P		18.00	19.5	20.5
10P		9.00	10.50	11.5	20P		19.00	20.5	21.5
11P		10.00	11.50	12.5					

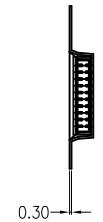
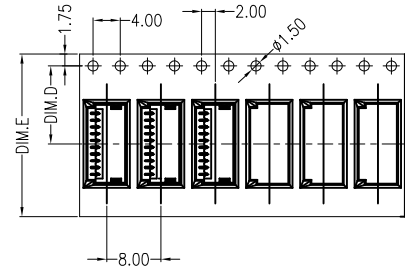
<b>广东科斯达电子科技有限公司</b> GUANG DONG KE SI DA ELECTRONIC TECHNOLOGY CO., LTD.		TITLE:	
		1.0 Pitch Wafer 90° SMT	
GENERAL TOLERANCE		USE:	PART NO.:
X. ±0.50	X. ±5°	CUSTOMER	A1003AWR-**-C1MB1-R
X.X ±0.30	X.X ±2°	APPD:	DWG NO.:
X.XX ±0.20	X.XX ±1°	Wangliang	GCCP-0689
UNITS: mm	DR:	CHKD:	SCALE
	Steven	Liuzhengling	1 : 1
			SHEET
			1 / 1

REV	ECN No.	DESCRIPTION	DESIGN	DATE
A		Release	陈志明	2021.3.12

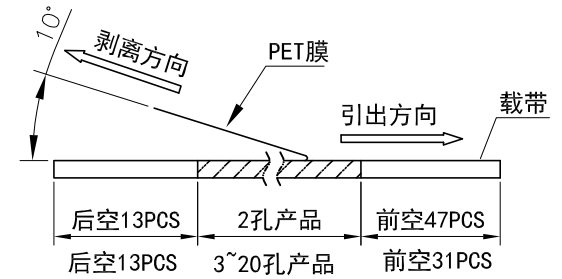
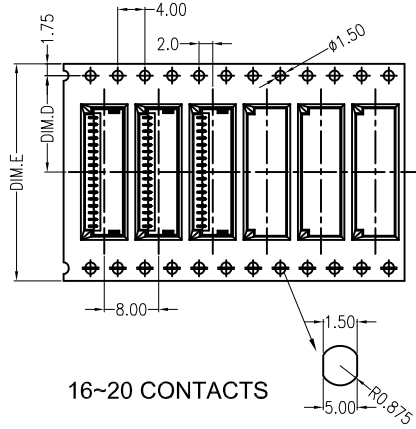
1 2 CONTACTS



2 3~15 CONTACTS

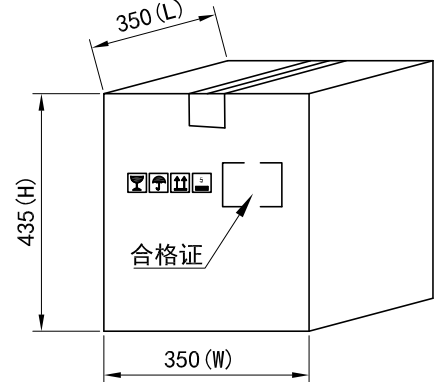
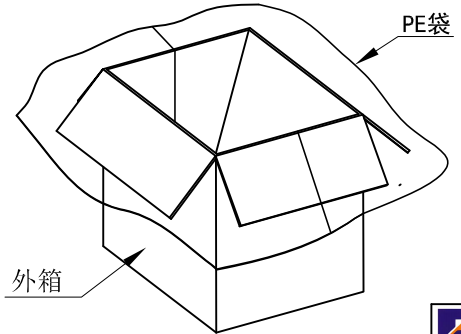
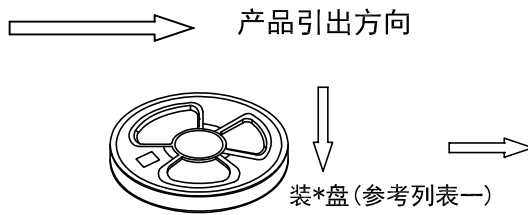
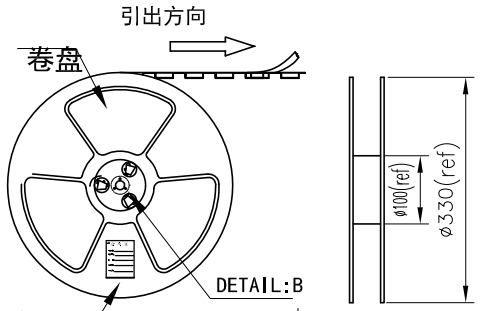


16~20 CONTACTS



(PET膜剥离示意图)

3



列表一

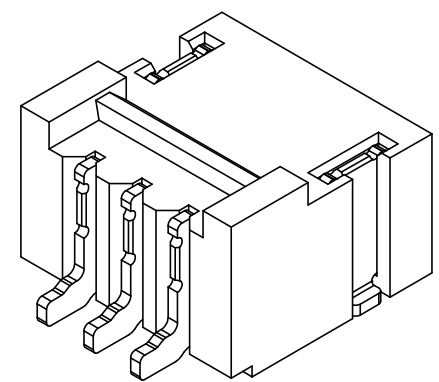
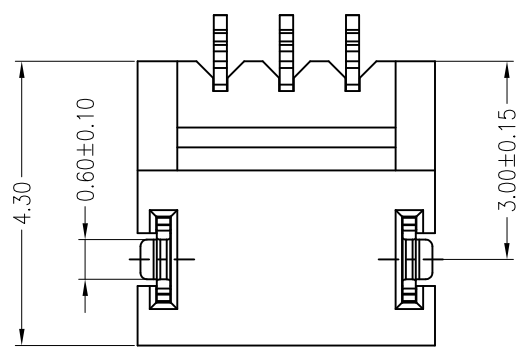
Circuits	DIM. D	DIM. E	Q'ty/Reel	Packing (Reel/Caton)
2 PIN	5.5	12	3000PCS	25/Reel
3~7PIN	7.5	16	2500PCS	20/Reel
8~15PIN	11.5	24	2500PCS	15/Reel
16~20PIN	14.2	32	2500PCS	11/Reel

包装说明:  
 1. 把成品包入卷盘中, 每盘装2500PCS (2孔3000PCS), 卷盘上贴上合格证, 将装好产品的卷盘放进外箱中, 外箱内先套一个大PE袋, 外箱上贴贴上合格证。  
 2. 所有材料有害物控制需符合RoHS标准。

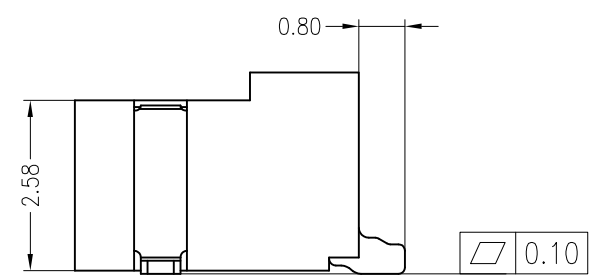
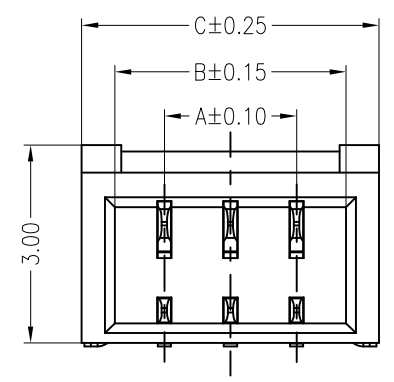
广东科斯达电子科技有限公司  
 GUANG DONG KE SI DA ELECTRONIC TECHNOLOGY CO., LTD.

X.±0.5	X.±'	USE: MANUFACTURE	TITLE: PART NO.: A1003WR卷装规范 DWG NO.: GCBZ-0689 SCALE 1:1 SHEET 1/1
.X±0.3	.X±'	APPD: 王锋	
.XX±0.25	.XX±'	CHKD: 曾令青	
--	--	DR: 蒋建银	
		UNITS: mm	

REV	DESCRIPTION	DESIGN	DATE
A0	NEW RELEASE	Steven	2019/05/09



**Specifications:**  
 Poles: 02 to 20  
 Contact resistance:  $\leq 20m\Omega$   
 Insulation resistance:  $\geq 100M\Omega$   
 Rated voltage: 125V AC DC  
 Rated current: 1.0A AC DC  
 Withstand Voltage: 500V AC/minute  
 Temperature Range:  $-25^{\circ}C \sim +85^{\circ}C$   
 Housing: PA6T UL94V-0, Natural  
 Contacts: PhosphorBronze/Matte Sn-plated  
 Solder Tabs: Brass/Matte Sn-plated

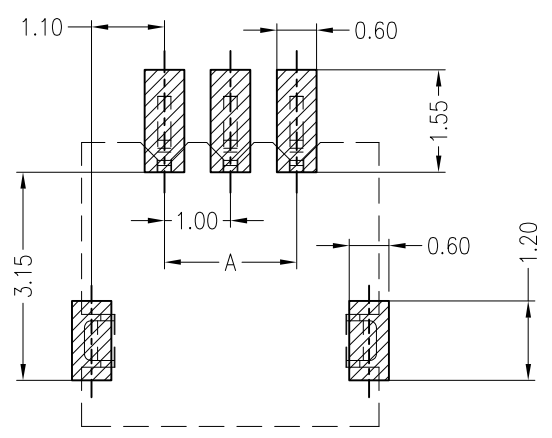


**ORDER INFORMATION:**

**A1004AWR-\*\*-C1MB1-R**

PART No. \_\_\_\_\_  
 No.OF CIRCUITS: 02-20  
 PLASTIC MATERIAL: C1M=PA6T

PACKAGING: R=REEL  
 Metl code: 1=PhosphorBronze  
 PLATING: B=Matte Sn



PCB LAYOUT(Tolerance:±0.05)

孔位	尺寸	A	B	C	孔位	尺寸	A	B	C
2P	1.00	2.50	3.50	12P	11.00	12.5	13.5		
3P	2.00	3.50	4.50	*13P	12.00	13.5	14.5		
4P	3.00	4.50	5.50	*14P	13.00	14.5	15.5		
5P	4.00	5.50	6.50	*15P	14.00	15.5	16.5		
6P	5.00	6.50	7.50	*16P	15.00	16.5	17.5		
7P	6.00	7.50	8.50	*17P	16.00	17.5	18.5		
8P	7.00	8.50	9.50	*18P	17.00	18.5	19.5		
9P	8.00	9.50	10.5	*19P	18.00	19.5	20.5		
10P	9.00	10.50	11.5	*20P	19.00	20.5	21.5		
*11P	10.00	11.50	12.5						

**广东科斯达电子科技有限公司**  
 GUANG DONG KE SI DA ELECTRONIC TECHNOLOGY CO., LTD.

TITLE: 1.0 Pitch Wafer 90° SMT


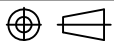
GENERAL TOLERANCE		USE: CUSTOMER	PART NO.: A1004AWR-**-C1MB1-R	
X. ±0.50	X. ±5'	APPD: Wangliang	DWG NO.: CCP-0819	
X.X ±0.30	X.X ±2'	CHKD: Liuzhengling	SCALE: 1 : 1	
X.XX ±0.20	X.XX ±1'	DR: Steven	SHEET: 1 / 1	

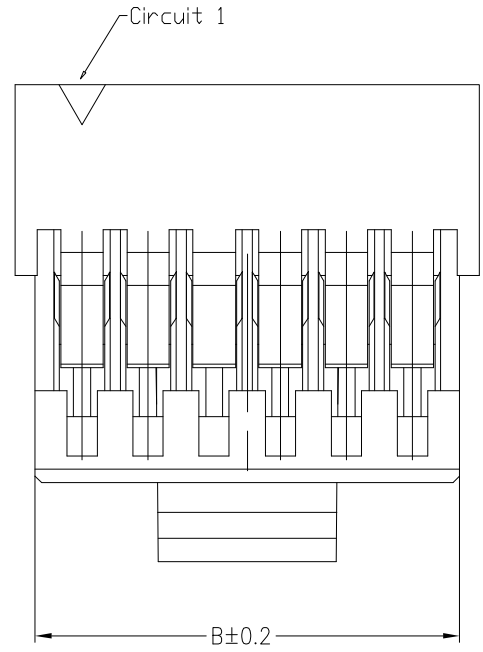
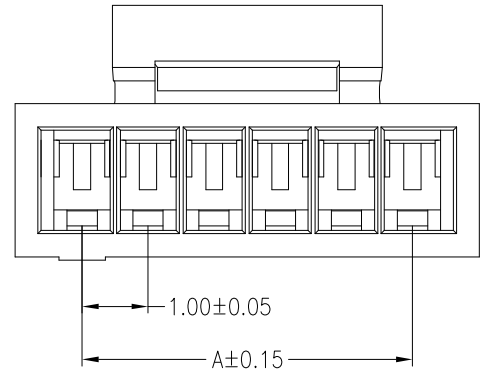
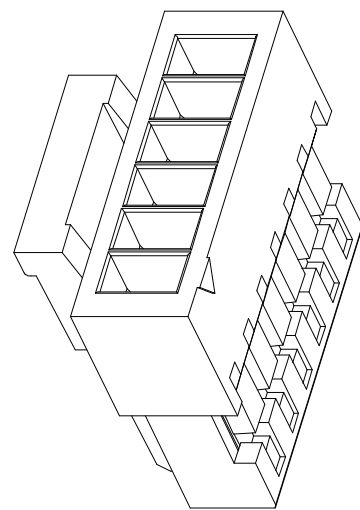
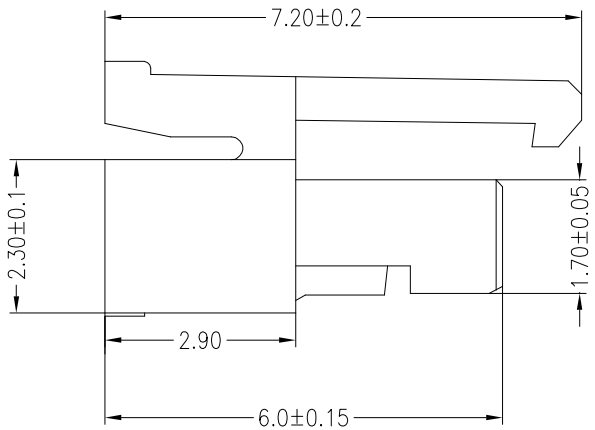
REV	DESCRIPTION	DESIGN	DATE
A0	NEW RELEASE	Steven	2019/05/09

线数 (N)	尺寸 mm	
	A	B
2	1.00	2.40
3	2.00	3.40
4	3.00	4.40
5	4.00	5.40
6	5.00	6.40
7	6.00	7.40
8	7.00	8.40
9	8.00	9.40
10	9.00	10.40
11	10.00	11.40
12	11.00	12.40
13	12.00	13.40
14	13.00	14.40
15	14.00	15.40

Specifications:  
Poles: 02 to 15  
Contact resistance:  $\leq 20m\Omega$   
Insulation resistance:  $\geq 100M\Omega$   
Rated voltage: 125V AC DC  
Rated current: 1.0A AC DC  
Withstand Voltage: 500V AC/minute  
Temperature Range:  $-25^{\circ}C \sim +85^{\circ}C$   
Housing: PA66 UL94V-0, Natural

ORDER INFORMATION:  
A1004Y-\*\*-A5W-P  
PART No. \_\_\_\_\_  
No.OF CIRCUITS: \_\_\_\_\_  
\*\* \_\_\_\_\_  
PLASTIC MATERIAL: \_\_\_\_\_  
A5W=PA66(WHITE) \_\_\_\_\_  
PACKAGING:  
P=PE

 <b>广东科斯达电子科技有限公司</b> GUANG DONG KE SI DA ELECTRONIC TECHNOLOGY CO., LTD.		TITLE: 1.0 Pitch HOUSING	
GENERAL TOLERANCE X. $\pm 0.50$ X. $\pm 5^{\circ}$ X.X $\pm 0.30$ X.X $\pm 2^{\circ}$ X.XX $\pm 0.20$ X.XX $\pm 1^{\circ}$		PART NO.: A1004Y-**-A5W-P	
USE: CUSTOMER APPD: Wangliang CHKD: Zenglingqing		DWG NO.: GCCP-0829	
 UNITS: mm		DR: Steven SCALE 1 : 1 SHEET 1 / 1	



1

2

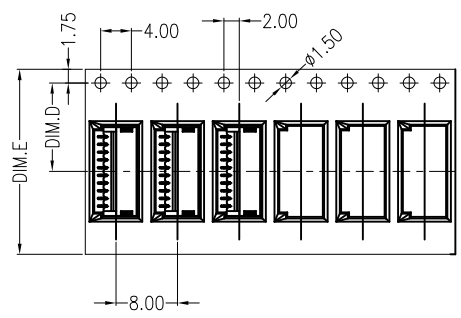
3

4

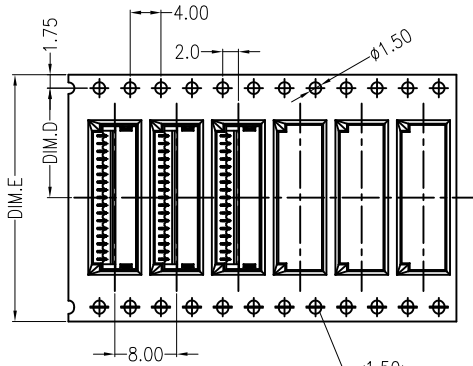
5

A B C D E F

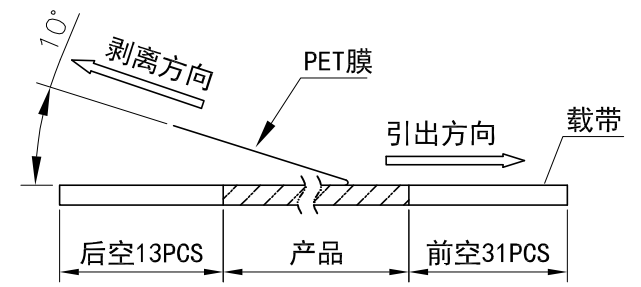
REV	ECN No.	DESCRIPTION	DESIGN	DATE
A		Release	蒋建银	2019.05.22



2~15 CONTACTS

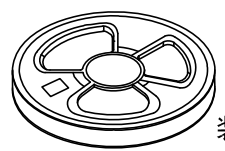
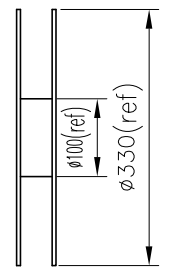
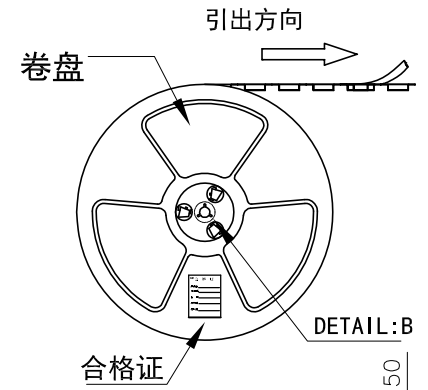


15~20 CONTACTS

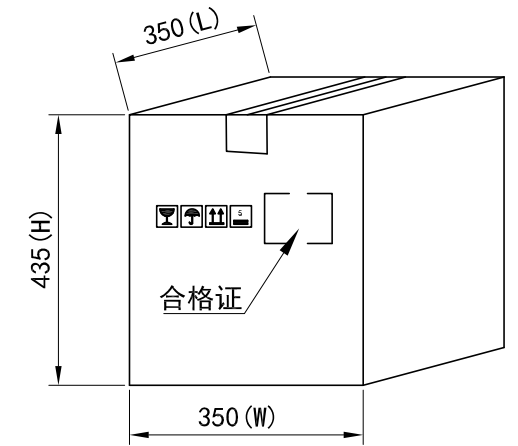
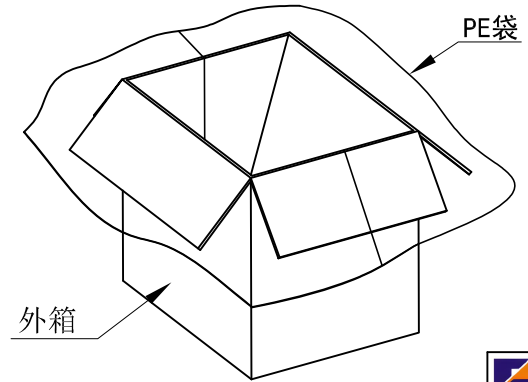


(PET膜剥离示意图)

产品引出方向



装\*盘(参考列表一)



列表一

Circuits	DIM. D	DIM. E	Q'ty/Reel	Packing (Reel/Caton)
2 PIN	5.5	12	2500PCS	25/Reel
3~7PIN	7.5	16	2500PCS	20/Reel
8~15PIN	11.5	24	2500PCS	15/Reel
16~20PIN	14.2	32	2500PCS	11/Reel

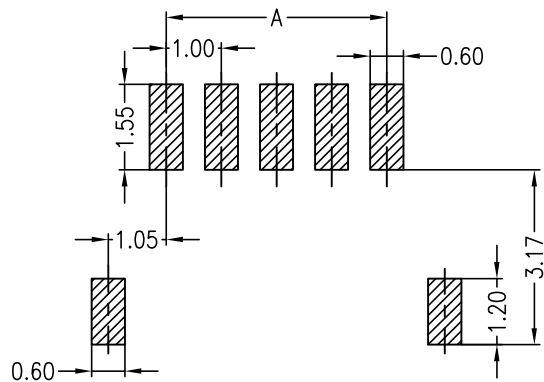
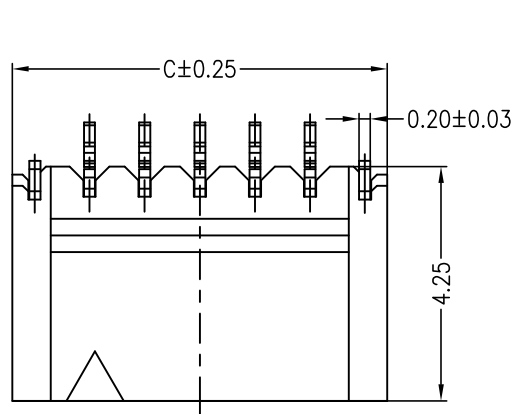
包装说明:

- 把成品包入卷盘中，每盘装2500PCS，卷盘上贴上合格证，将装好产品的卷盘放进外箱中，外箱内先套一个大PE袋，外箱上贴贴上合格证。
- 所有材料有害物控制需符合RoHS标准。

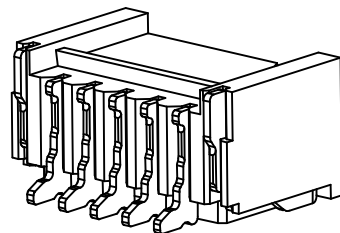
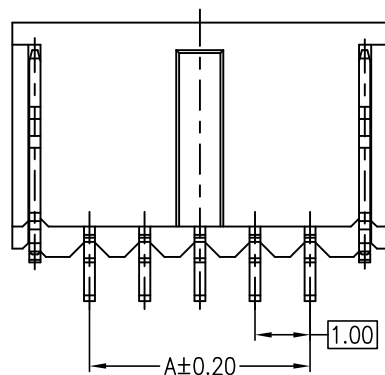
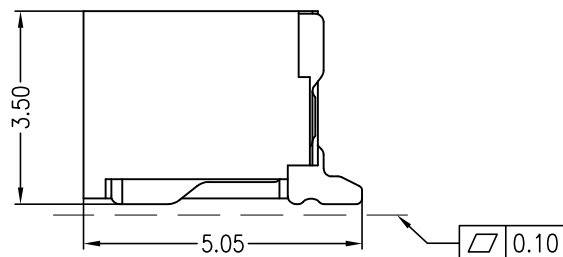
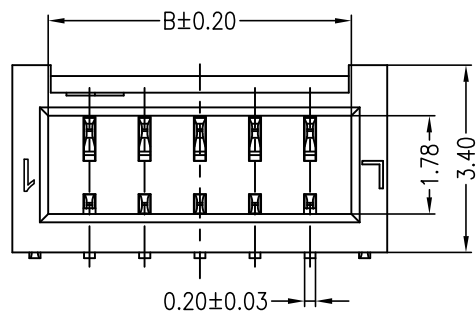
**广东科斯达电子科技有限公司**  
GUANG DONG KE SI DA ELECTRONIC TECHNOLOGY CO., LTD.

X.± 0.5	X.±'	USE: MANUFACTURE
.X± 0.3	.X±'	APPD: 王锋
.XX± 0.25	.XX±'	CHKD: 曾令青
--	--	DR: 蒋建银
⊕	◁	UNITS: mm

TITLE:	
PART NO.: A1004AWR卷装规范	
DWG NO.: GCBZ-0819	
SCALE: 1 : 1	SHEET: 1 / 1



PCB LAYOUT(Tolerance:±0.05)



REV	DESCRIPTION	DESIGN	DATE
A	NEW RELEASE	FangSongLe	2021/06/30

Specifications:

- Poles: 02 to 20
- Contact resistance: ≤20mΩ
- Insulation resistance: ≥100MΩ
- Rated voltage: 125V AC DC
- Rated current: 1.0A AC DC
- Withstand Voltage: 500V AC/minute
- Temperature Range: -25°C~ +85°C
- Housing: PA6T UL94V-0, Natural
- Cap: PA6T UL94V-0, Natural
- Contacts: PhosphorBronze/Matte Sn-plated
- Solder tabs: PhosphorBronze/Matte Sn-plated

ORDER INFORMATION:

**A1007AWR-\*\*-C2MB1-R**

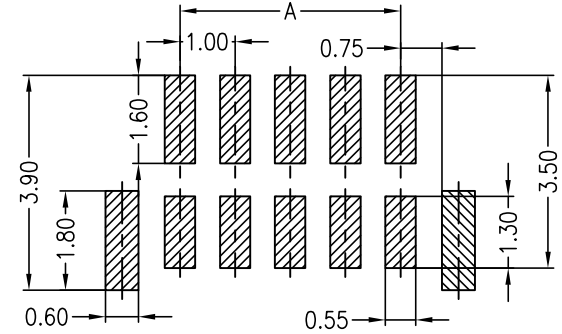
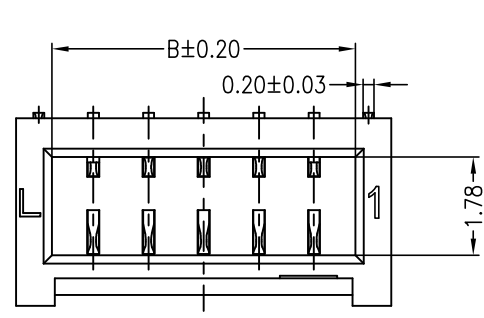
PART No.		PACKAGING:
No.OF CIRCUITS:		R=REEL
02-20P		Metal code:
PLASTIC MATERIAL:		1=PhosphorBronze
C2M=PA6T		PLATING:
		B=MATTE Sn

PIN	DIM A	DIM B	DIM C	PIN	DIM A	DIM B	DIM C
2P	1.00	2.50	3.80	12P	11.00	12.5	13.8
3P	2.00	3.50	4.80	13P	12.00	13.5	14.8
4P	3.00	4.50	5.80	14P	13.00	14.5	15.8
5P	4.00	5.50	6.80	15P	14.00	15.5	16.8
6P	5.00	6.50	7.80	16P	15.00	16.5	17.8
7P	6.00	7.50	8.80	17P	16.00	17.5	18.8
8P	7.00	8.50	9.80	18P	17.00	18.5	19.8
9P	8.00	9.50	10.8	19P	18.00	19.5	20.8
10P	9.00	10.50	11.8	20P	19.00	20.5	21.8
11P	10.00	11.50	12.8				

<p><b>广东科斯达电子科技有限公司</b> GUANG DONG KE SI DA ELECTRONIC TECHNOLOGY CO., LTD.</p>		TITLE:	
		1.0 Pitch Wafer 90° SMT	
GENERAL TOLERANCE		USE:	PART NO.:
X. ±0.50	X. ±5'	CUSTOMER	A1007AWR-**-C2MB1-R
X.X ±0.30	X.X ±2'	APPD:	DWG NO.:
X.XX ±0.20	X.XX ±1'	Liuzhengling	GCKH-0877
CHKD:	DR:	STEVEN	SCALE
UNITS: mm	FangSongLe		1 : 1
			SHEET
			1 / 1

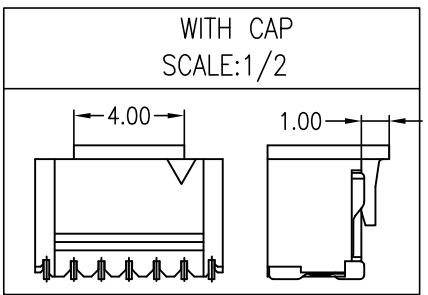
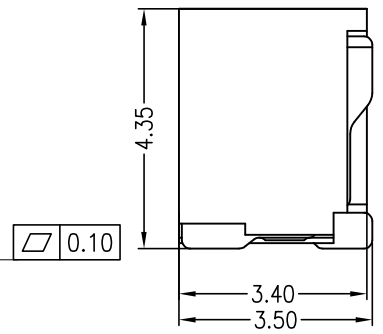
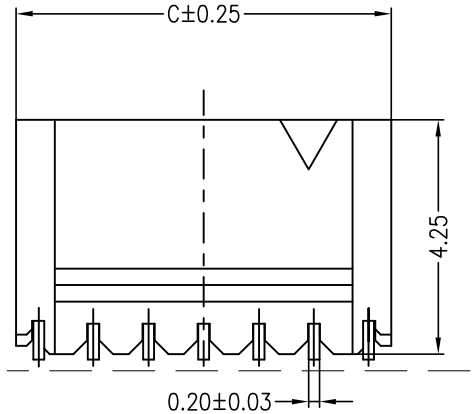


REV	DESCRIPTION	DESIGN	DATE
AO	NEW RELEASE	FangSongLe	2020/08/07



PCB LAYOUT(Tolerance:±0.05)

Specifications:  
 Poles: 02 to 20  
 Contact resistance:≤20mΩ  
 Insulation resistance:≥100MΩ  
 Rated voltage:125V AC DC  
 Rated current:1.0A AC DC  
 Withstand Voltage: 500V AC/minute  
 Temperature Range:-25°C~ +85°C  
 Housing:PA6T UL94V-0,Natural  
 Cap:PA6T UL94V-0,Natural  
 Contacts:PhosphorBronze/Matte Sn-plated  
 Solder tabs:PhosphorBronze/Matte Sn-plated

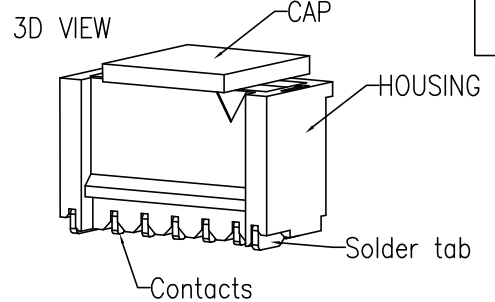
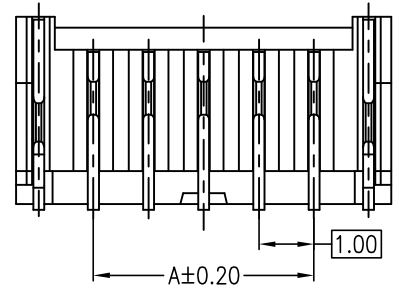


ORDER INFORMATION:

**A1007AWV-\*\*-C2MB1-R-X**

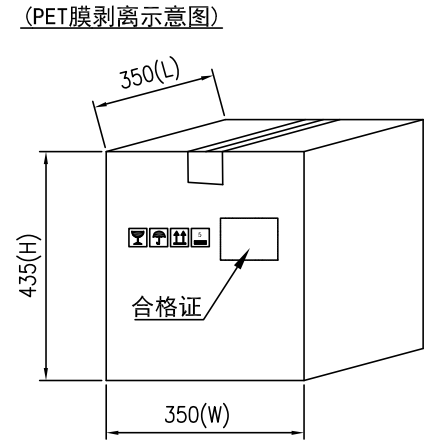
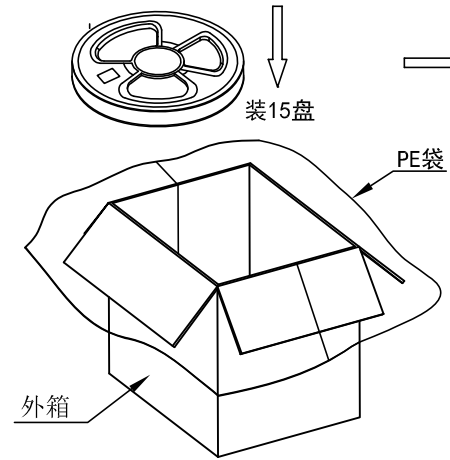
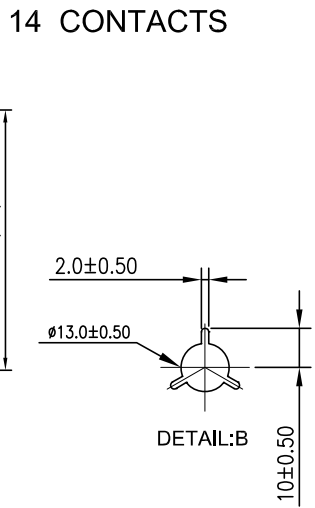
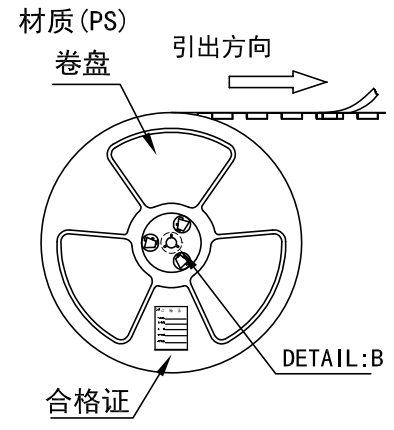
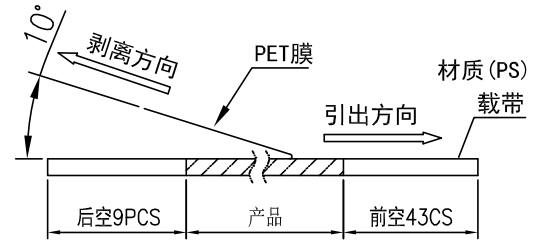
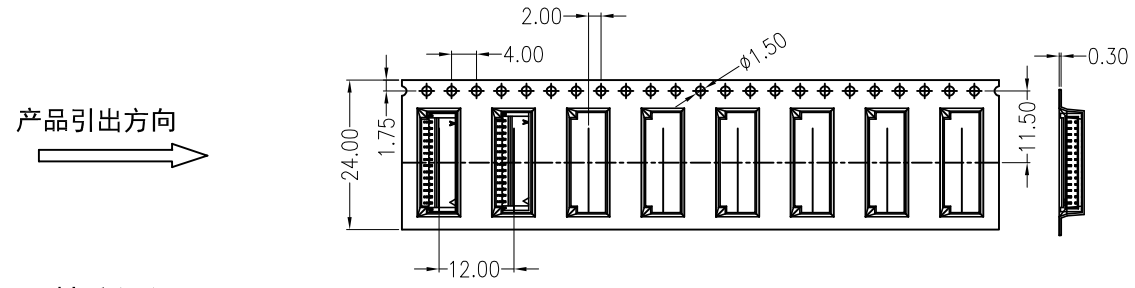
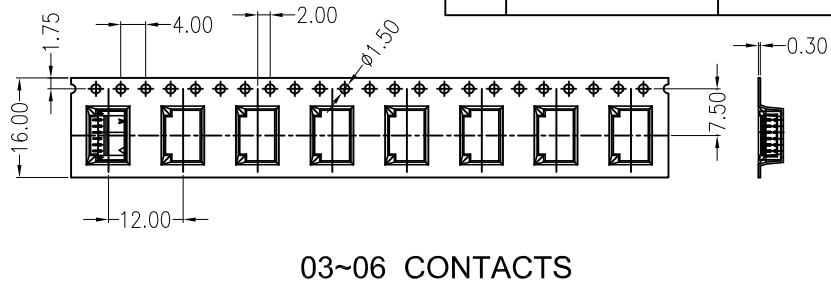
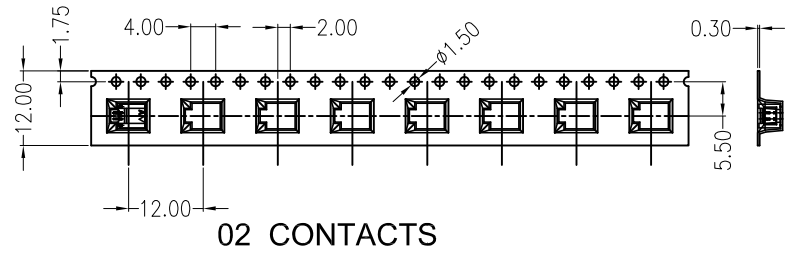
PART No.		X:CAP
No.OF CIRCUITS:		PACKAGING:
02-20P		R=REEL
PLASTIC MATERIAL:		Metal code:
C2M=PA6T		1=PhosphorBronze
		PLATING:
		B=MATTE Sn

PIN	DIM A	DIM B	DIM C	PIN	DIM A	DIM B	DIM C
2P	1.00	2.50	3.80	12P	11.00	12.5	13.8
3P	2.00	3.50	4.80	13P	12.00	13.5	14.8
4P	3.00	4.50	5.80	14P	13.00	14.5	15.8
5P	4.00	5.50	6.80	15P	14.00	15.5	16.8
6P	5.00	6.50	7.80	16P	15.00	16.5	17.8
7P	6.00	7.50	8.80	17P	16.00	17.5	18.8
8P	7.00	8.50	9.80	18P	17.00	18.5	19.8
9P	8.00	9.50	10.8	19P	18.00	19.5	20.8
10P	9.00	10.50	11.8	20P	19.00	20.5	21.8
11P	10.00	11.50	12.8				



<b>广东科斯达电子科技有限公司</b> GUANG DONG KE SI DA ELECTRONIC TECHNOLOGY CO., LTD.		TITLE: 1.0 Pitch Wafer 180° SMT	
		PART NO.: A1007AWV-**-C2MB1-R-X	
GENERAL TOLERANCE		USE: CUSTOMER	
X. ±0.50	X. ±5°	APPD: Liuzhengling	
X.X ±0.30	X.X ±2°	CHKD: Steven	
X.XX ±0.20	X.XX ±1°	DR: FangSongLe	
UNITS: mm		SCALE: 1 : 1	
		SHEET: 1 / 1	

REV	ECN No.	DESCRIPTION	DESIGN	DATE
A		Release	陈志明	2022.05.19



列表一

Circuits	DIM. D	DIM. E	Q'ty/Reel	Packing (Reel/Caton)
02PIN	5.50	12	1500PCS	25/Reel
03~06PIN	7.50	16	1500PCS	20/Reel
14PIN	11.50	24	1500PCS	15/Reel

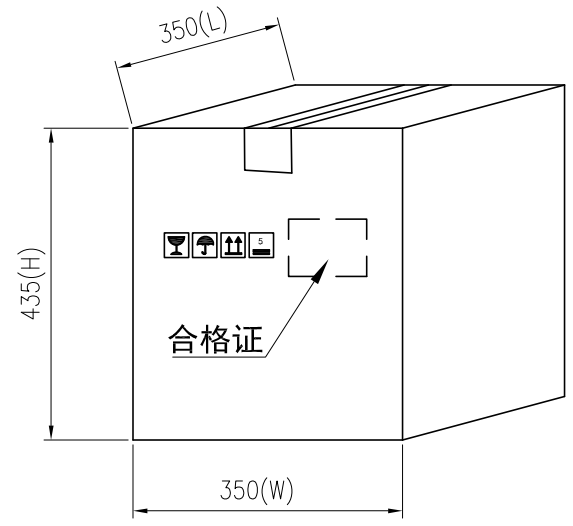
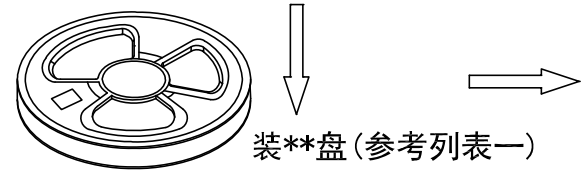
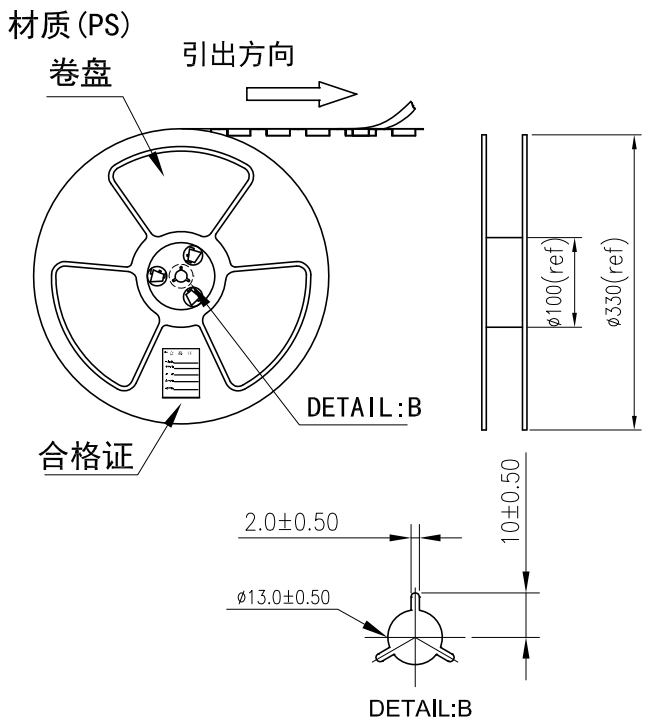
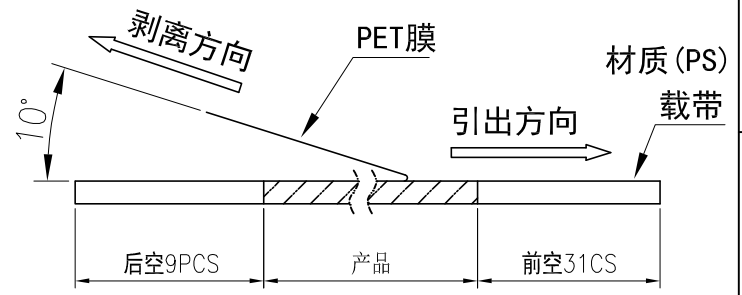
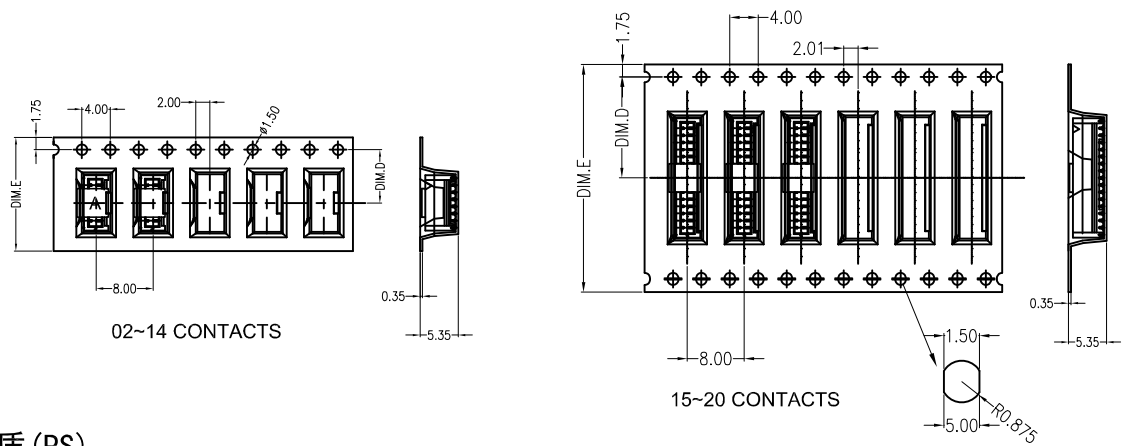
- 包装说明:
- 把成品包入卷盘中, 每盘装1500PCS, 卷盘上贴上合格证, 将装好产品的卷盘放进外箱中, 外箱内先套一个大PE袋, 外箱上贴贴上合格证.
  - 所有材料有害物控制需符合RoHS标准.

**广东科斯达电子科技有限公司**  
**GUANG DONG KE SI DA ELECTRONIC TECHNOLOGY CO., LTD.**

X.± 0.5	X.±'	USE: MANUFACTURE
.X± 0.3	.X±'	APPD: 张忠永
.XX± 0.25	.XX±'	CHKD: 蒋建银
--	--	DR: 陈志明
⊕	◁	UNITS: mm

TITLE: A1007AWR
PART NO.: A1007AWR 卷装规范
DWG NO.: GCBZ-0814
SCALE: 1 : 1
SHEET: 1 / 1

REV	ECN No.	DESCRIPTION	DESIGN	DATE
A		Release	蒋建银	2020.09.21



列表一

Circuits	DIM. D	DIM. E	Q'ty/Reel	Packing (Reel/Caton)
02~03PIN	5.50	12	1500PCS	25/Reel
04~06PIN	7.50	16	1500PCS	20/Reel
07~14PIN	11.50	24	1500PCS	15/Reel
15~20PIN	14.20	32	1500PCS	11/Reel

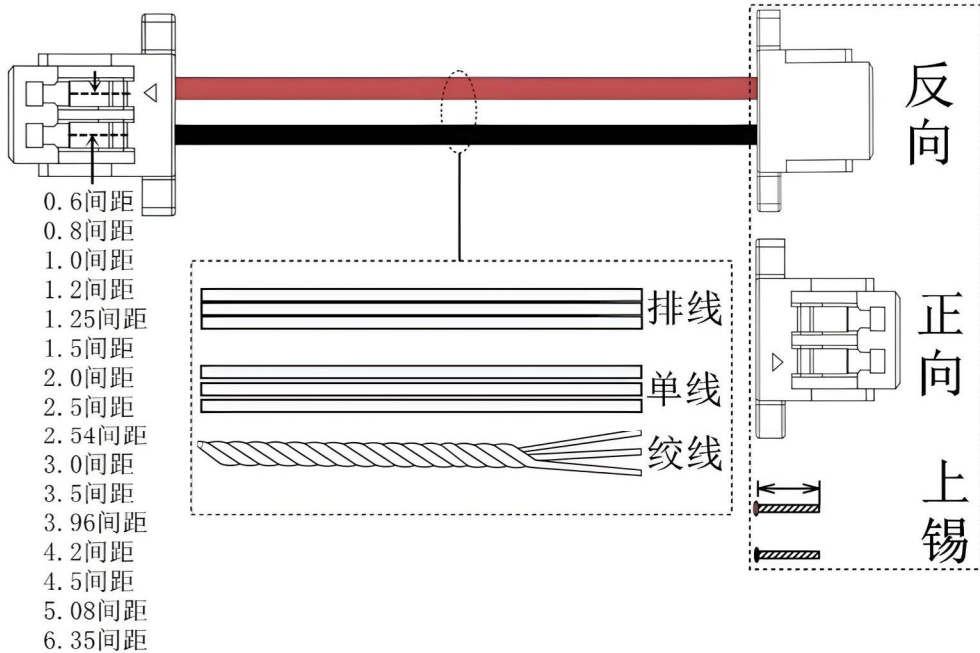
包装说明:

- 把成品包入卷盘中, 每盘装1500PCS, 卷盘上贴上合格证, 将装好产品的卷盘放进外箱中, 外箱内先套一个大PE袋, 外箱上贴贴上合格证.
- 所有材料有害物控制需符合RoHS标准.

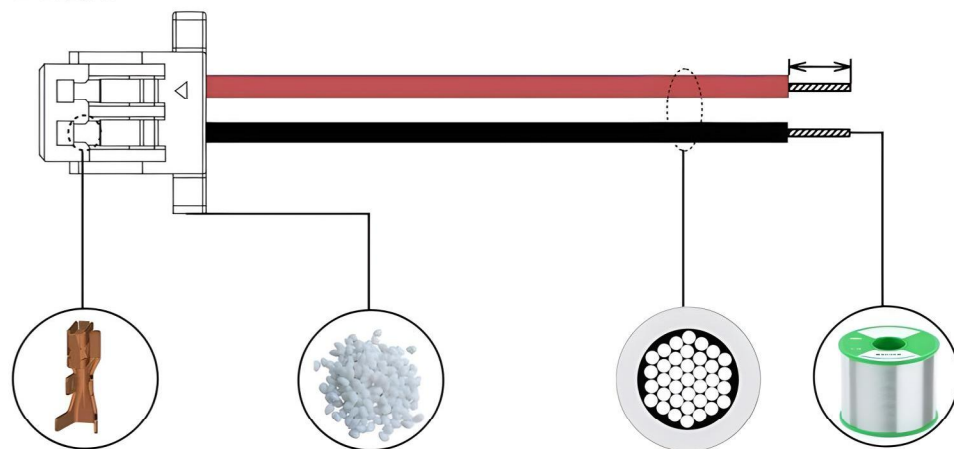
**广东科斯达电子科技有限公司**  
**GUANG DONG KE SI DA ELECTRONIC TECHNOLOGY CO., LTD.**

X.± 0.5	X.±'	USE: MANUFACTURE
.X± 0.3	.X±'	
.XX±0.25	.XX±'	
--	--	
UNITS: mm		DR: 蒋建银

TITLE: A1007AWV	
PART NO.: A1007AWV 卷装规范	
DWG NO.: GCBZ-0877	
SCALE 1 : 1	SHEET 1 / 1



## 可定制·线色选择



黄铜 磷铜  
先镀 后镀

PT-PBT 94V-0

660-PA66 94V-0

PGN0-P-640PG3G-NC (15%GF)

$\times 0.1\text{mm}$  环保无

$\times 0.12\text{mm}$  铅锡线

$\times 0.16\text{mm}$

<b>广东科斯达电子科技有限公司</b> GUANG DONG KE SI DA ELECTRONIC TECHNOLOGY CO., LTD.			TITLE: NH-T 端子	
X.±0.1	X.±1'	USE:	PART NO.:	
.X±0.05	.X±0.5'	MANUFACTURE	-	
.XX±0.01	.XX±0.1'	APPD:	DWG NO.:	
.XXX±0.005	.XXX±0.05'	刘振岭	-	
		CHKD:	SCALE	
UNITS:	DR:	王亮	1 : 1	SHEET
mm	蒋建银			1 / 1



# 电子线尺寸规格表

## PVC绝缘电子线

型号	线规	铜丝材质	外皮材质	额定温度	额定电压
UL1007	30-16AWG	镀锡铜	PVC	80°C	300V
UL1015	26-10AWG	镀锡铜	PVC	105°C	600V
UL1061	32-14AWG	镀锡铜	PVC	80°C	300V
UL1571	32-14AWG	镀锡铜	PVC	80°C	30V
UL1672	26-12AWG	镀锡铜	PVC	105°C	300V
UL1617	24-10AWG	镀锡铜	PVC	105°C	600V
UL1569	30-10AWG	镀锡铜	PVC	105°C	300V
H05V-K VDE认证线	0.2-2.5MM <sup>2</sup>	裸铜镀锡铜	PVC	70°C	300V/500V
RV线	0.2-6.0MM <sup>2</sup>	裸铜	PVC	70°C	300V/500V
BV线	0.5-2.5MM <sup>2</sup>	裸铜	PVC	70°C	450V/750V
BVV线	0.75-16MM <sup>2</sup>	裸铜	PVC	70°C	450V/750V
BVR线	0.5-16MM <sup>2</sup>	裸铜	PVC	70°C	450V/750V

## XL-PE绝缘无卤线

型号	线规	铜丝材质	外皮材质	额定温度	额定电压
UL1430	30-16AWG	镀锡铜	XL-PVC	105°C	300V
UL10368	30-10AWG	镀锡铜	XL-PE	105°C	300V
UL3266	32-8AWG	镀锡铜	XL-PE	105°C	300V
UL3302	32-16AWG	镀锡铜	XL-PE	105°C	30V
UL3385	30-10AWG	镀锡铜	XL-PE	105°C	300V
UL3396	30-14AWG	镀锡铜	XL-PE	105°C	300V

## PFA/FEP绝缘铁氟龙线

型号	线规	铜丝材质	外皮材质	额定温度	额定电压
UL1322	30-14AWG	镀锡铜	FEP	200°C	300V
UL1322双层绝缘线	28-10AWG	镀锡铜	FEP	200°C	300V
UL10064	32-10AWG	镀锡铜	FEP	105°C	30V
UL10362	30-06AWG	镀锡铜	PFA	250°C	600V
VDE铁氟龙线	0.25-1.5MM <sup>2</sup>	镀锡铜	FEP	180°C	300V

## 硅橡胶绝缘高温线

型号	线规	铜丝材质	外皮材质	额定温度	额定电压
UL3239硅橡胶线	30-16AWG	镀锡铜	硅橡胶	200°C	3KV/6KV/10KV
UL3239双层绝缘线	24-18AWG	镀锡铜	硅橡胶	200°C	3KV6KV/10KV
UL3122编织线	24-16AWG	镀锡铜	硅橡胶	200°C	300V
UL3135硅橡胶线	32-10AWG	镀锡铜	硅橡胶	200°C	600V
UL3132硅橡胶线	30-24AWG	镀锡铜	硅橡胶	150°C	300V
CCC编织硅橡胶线	0.5-6.0MM <sup>2</sup>	镀锡铜	硅橡胶	200°C	300V
平方硅橡胶线	0.2-2.5MM <sup>2</sup>	镀锡铜	硅橡胶		
H05S-K VDE平方硅橡胶线	0.5-2.5MM <sup>2</sup>	镀锡铜	硅橡胶	180°C	300V/500V

## 排线2-20P

型号	线规	铜丝材质	外皮材质	额定温度	额定电压
UL2468排线	30-16AWG	镀锡铜	PVC	80°C	300V
UL20080排线	28-24AWG	镀锡铜	PVC	80°C	30V
软白排线	2.0/2.54间距7*0.11	镀锡铜	PVC		
2651灰排线	2.0/2.54间距	镀锡铜	PVC	105°C	300V
2651红边灰排/灰排	间距1.0/1.27	镀锡铜	PVC	105°C	300V
透明排线	2-12P/7*0.14	镀锡铜	PVC		
彩色排线	30-18AWG	镀锡铜	PVC	80/105°C	

## 排线2-20P

型号	线规	铜丝材质	外皮材质	额定温度	额定电压
UL2468排线	30-16AWG	镀锡铜	PVC	80°C	300V
UL20080排线	28-24AWG	镀锡铜	PVC	80°C	30V
软白排线	2.0/2.54间距7*0.11	镀锡铜	PVC		
2651灰排线	2.0/2.54间距	镀锡铜	PVC	105°C	300V
2651红边灰排/灰排	间距1.0/1.27	镀锡铜	PVC	105°C	300V
透明排线	2-12P/7*0.14	镀锡铜	PVC		
彩色排线	30-18AWG	镀锡铜	PVC	80/105°C	

## 电子线颜色选型定制



 <b>广东科斯达电子科技有限公司</b> GUANG DONG KE SI DA ELECTRONIC TECHNOLOGY CO., LTD.			TITLE: NH-T 端子	
X.±0.1	X.±1'	USE: MANUFACTURE	PART NO.:	
.X±0.05	.X±0.5'		A1003T 端子	
.XX±0.01	.XX±0.1'	APPD: 刘振岭	DWG NO.:	
.XXX±0.005	.XXX±0.05'	CHKD: 王亮	SCALE	
 UNITS: mm		DR: 蒋建银	1 : 1	SHEET 1 / 1