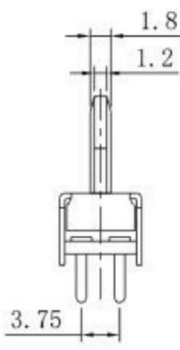
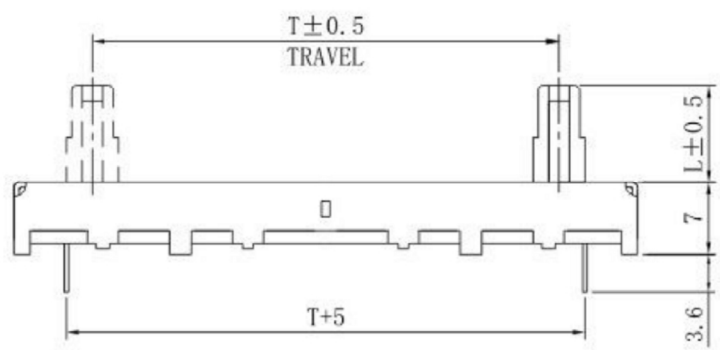


P. C. B MOUNTING HOLE DETAIL



KSD SVXX80 SERIES SLIDE POTENTIOMETERS
 SWITCH CONNECTOR SVXX80 直滑电位器

Electrical characteristics 电气特性

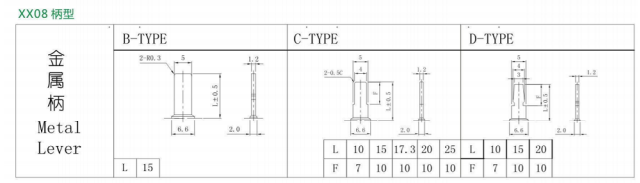
| | | | | | | | |
|------------------------------------|------------------------------|-----------|------|-------|-------|-------|-----|
| Total Resistance Range 总阻值 | 1K≤TR≤1MΩ | | | | | | |
| Resistance Tolerance 总阻值容许公差 | ±20% | | | | | | |
| Resistance Taper 阻值线性 | A, B, C, D, W taper. | | | | | | |
| Rating Power 额定功率 | Taper 线性 | Travel 行程 | | | | | |
| | | 20mm | 30mm | 45mm | 60mm | | |
| | B Taper B 线性 | Single | 0.1 | 0.2 | 0.25 | 0.25 | |
| | | Dual | 0.05 | 0.1 | 0.125 | 0.125 | |
| B Except B以外 | Single | 0.05 | 0.1 | 0.125 | 0.125 | | |
| | Dual | 0.025 | 0.05 | 0.06 | 0.06 | | |
| Slide Noise 杂讯 | Less than 100mV Max | | | | | | |
| Residual Resistance Value 残留阻值 (Ω) | Total resistance 总阻值 | 10KΩ | 50KΩ | 100KΩ | 200KΩ | 500KΩ | 1MΩ |
| | Between terminals 端子1~2间 | 10Ω | 10Ω | 10Ω | 20Ω | 20Ω | 20Ω |
| Dielectric Voltage 耐电压 | For 1 minute or more AC 300V | | | | | | |
| | Insulation resistance 绝缘阻抗 | | | | | | |
| More than 100MΩ at DC 250V | | | | | | | |

Mechanical characteristics 机械特性

| | |
|--------------------------|---|
| Operating Force 推动力 | 15gf.cm~150 gf.cm |
| Click slip-out Force 脱出力 | 20gf.cm~250 gf.cm |
| Stop Strength 止挡强度 | 5kgf.cm |
| Lever Wobble 柄的晃动 | 2(2*L)/20mm (L:Lever length both side 两侧柄长) |
| Push pull strength 推拉强度 | 3kgf.cm |

Environmental characteristics

| | |
|----------------------|---------------|
| Rotational Life 旋转寿命 | 15,000 cycles |
|----------------------|---------------|



| | | | |
|---|----|----|----|
| T | 20 | 30 | 45 |
|---|----|----|----|

广东科斯达电子科技有限公司
 KSDKG Guang dong Keside Electronic Technology Co., Ltd.

TOLERANCE UNLESS OTHERWISE STATED :
 Up to 5 ±0.2
 Above 5 ~ 15 ±0.3
 Above 15 ~ 30 ±0.4
 Above 30 ~ 50 ±0.5
 Angle ±0.3°

3RD. ANGEL'S

UNITS MM

DRAWN BY: Jack Lu DATE: 07/23/13
 CHECKED BY: Jacky Chen DATE: 07/23/13
 APPROVED BY: Tony Kao DATE: 07/23/13

| | | |
|-----------|----------|------------------------------|
| MAT'L | TITLE | KSD-SV SLIDING POTENTIOMETER |
| FINISH | MODLE | KSD-SV滑动电位器系列 |
| SCALE | DWG NO. | KSD-SVXX43N |
| SHEET NO. | PART NO. | |
| 1 of 1 | | |

SIZE A4
 VER R2

| | | | |
|----------|-------------|----------|--------|
| 2 | 公差及料號更新 | Jack | 072313 |
| 1 | 圖面更新 | Frank Wu | 021012 |
| ITEM NO. | DESCRIPTION | DRAWN | DATE |