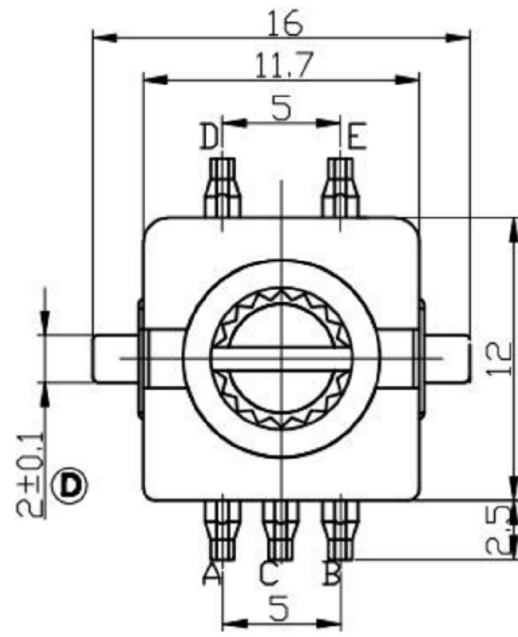
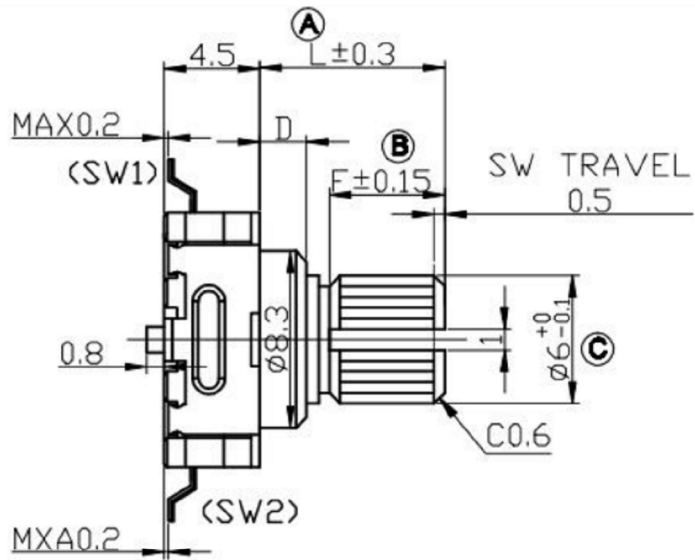
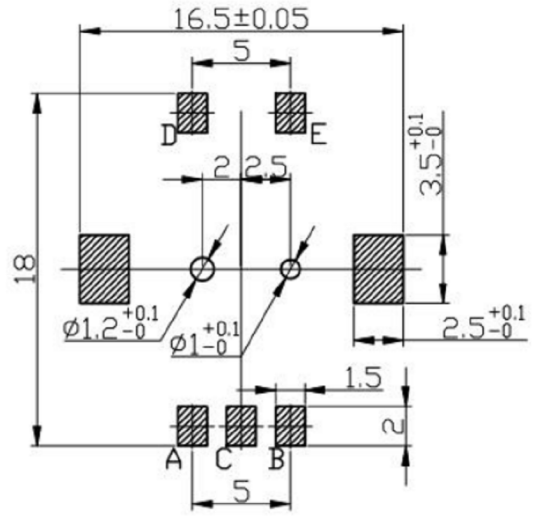
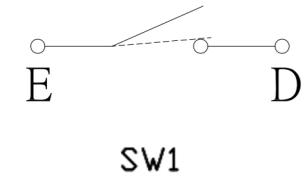


DIMENSIONS

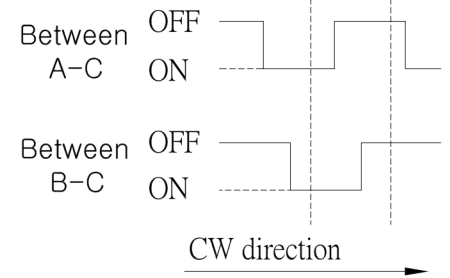


| Electrical characteristics 电气特性 | |
|-------------------------------------|--|
| Rating Power 额定功率 | DC5V 10mA |
| Fluttering 振荡 | T1,T3≤3ms |
| Sliding Noise(Bounce)滑动杂音 | T2≤2ms |
| Dielectric Voltage 耐电压 | For 1 minute or more AC 300V |
| Insulation resistance 绝缘阻抗 | More than 100MΩ at DC 250V |
| Phase Difference 相位差 | ΔT≥0.08T |
| Mechanical characteristics 机械特性 | |
| Total Rotational Angle 旋转角度 | 360° |
| Rotational Torque 旋转力矩 | 30gf.cm~200 gf.cm |
| Number of click 档位数量 | 30 Detents(Angle:1.2°±2°) 20 Detents(Angle:1.8°±2°) |
| Push-Pull Strength 轴推拉强度 | 10Kgf.cm Min for 10Sec |
| Bushing & nut tight strength 轴套锁紧强度 | 10.0Kgf Min |
| Switch Specifications 开关特性 | |
| Maximum Ratings 额定电压 | DC5V 10mA(1mA Min) |
| Contact resistance 接触阻抗 | 200mΩ Max |
| Travel of switch 开关移动量 | 0.5+0.4/-0.3 mm OR 1.5+0.4/-0.3 mm |
| Operating force of switch 开关动作力 | 500±200gf |
| Environmental characteristics | |
| Rotational Life 旋转寿命 | 30,000 cycles |
| Switch Life 开关寿命 | 20,000 cycles |

(SW02)CIRCUIT DIAGRAM



(SW01) ENCODER
(SW02) PUSH ON SW
CLICK Position



(SW01) OUTPUT

EC11 轴心轴套规格

| F-TYPE | Y-TYPE | | | | | | | | | | | | | | | | |
|--|-----------------------------------|-----|---------------------|-----------------------------------|-----|------|-----------------------------------|---------------------|---|-------|-----|----------------|-----------------------------------|-----|------|-------------------------------|---------------|
| | | | | | | | | | | | | | | | | | |
| <table border="1"> <tr> <th>D=3.5</th> <th>D=5</th> </tr> <tr> <td>L 1 9 10 F 1 4 4</td> <td>L 10 12 13 15 16 7 F 1 6 7 5 7</td> </tr> <tr> <th>D=7</th> <th>D=10</th> </tr> <tr> <td>L 12 5 13 15 17 20 F 1 4 5 7 7</td> <td>L 29 3 32 F 9 12</td> </tr> </table> | D=3.5 | D=5 | L 1 9 10 F 1 4 4 | L 10 12 13 15 16 7 F 1 6 7 5 7 | D=7 | D=10 | L 12 5 13 15 17 20 F 1 4 5 7 7 | L 29 3 32 F 9 12 | <table border="1"> <tr> <th>D=3.5</th> <th>D=5</th> </tr> <tr> <td>L 8 5 F 3 5</td> <td>L 9 5 11 11 3 12 5 F 4 4 5 5 5</td> </tr> <tr> <th>D=7</th> <th>D=10</th> </tr> <tr> <td>L 12 5 13 5 15 5 F 4 5 5 5</td> <td>L 19 5 F 6</td> </tr> </table> | D=3.5 | D=5 | L 8 5 F 3 5 | L 9 5 11 11 3 12 5 F 4 4 5 5 5 | D=7 | D=10 | L 12 5 13 5 15 5 F 4 5 5 5 | L 19 5 F 6 |
| D=3.5 | D=5 | | | | | | | | | | | | | | | | |
| L 1 9 10 F 1 4 4 | L 10 12 13 15 16 7 F 1 6 7 5 7 | | | | | | | | | | | | | | | | |
| D=7 | D=10 | | | | | | | | | | | | | | | | |
| L 12 5 13 15 17 20 F 1 4 5 7 7 | L 29 3 32 F 9 12 | | | | | | | | | | | | | | | | |
| D=3.5 | D=5 | | | | | | | | | | | | | | | | |
| L 8 5 F 3 5 | L 9 5 11 11 3 12 5 F 4 4 5 5 5 | | | | | | | | | | | | | | | | |
| D=7 | D=10 | | | | | | | | | | | | | | | | |
| L 12 5 13 5 15 5 F 4 5 5 5 | L 19 5 F 6 | | | | | | | | | | | | | | | | |

输出信号

| 轴的旋转方向 Shaft rotational direction | 信号 Signal | 正向 Direction | 反向 Reverse |
|--------------------------------------|------------------------------|-----------------|---------------|
| 顺时针方向 C.C.W. | A(A`C端子间) A(Terminal A`C) | | |
| 逆时针方向 C.C.W. | B(B`C端子间) B(Terminal B`C) | | |

* 具体轴心规格，可依客户需求订做。
Specific axis specifications can be customized according to customer needs.

P.C. BOARD MOUNTING HOLE DIMENSIONS

广东科斯达电子科技有限公司
KSDKG Guang dong Keside Electronic Technology Co., Ltd.

TOLERANCE UNLESS OTHERWISE STATED :
Up to 5 ±0.2
Above 5 ~ 15 ±0.3
Above 15 ~ 30 ±0.4
Above 30 ~ 50 ±0.5
Angle ±0.3

3RD. ANGEL'S

UNITS MM

| | | | |
|------------------------|----------------|-------------------|---------------------------|
| DRAWN BY: Jack Lu | DATE: 07/23/13 | MAT'L | TITLE: EC ENCODING SWITCH |
| CHECKED BY: Jacky Chen | DATE: 07/23/13 | FINISH | MODLE: EC编码开关系列 |
| APPROVED BY: Tony Kao | DATE: 07/23/13 | SCALE: 1 : 1 | DWG NO.: KSD-EC1122S |
| | | SHEET NO.: 1 of 1 | PART NO. |

| ITEM NO. | DESCRIPTION | DRAWN | DATE |
|----------|-------------|----------|--------|
| 2 | 公差及料號更新 | Jack | 072313 |
| 1 | 圖面更新 | Frank Wu | 021012 |