



KSD-1H
Toggle Switches

KSD

SWITCH CONNECTOR



SPECIFICATIONS

CONTACT RATING: 12 Amps @125/250 VAC.

MECHANICAL LIFE: 30,000 make-and-break cycles.

CONTACT RESISTANCE: 20 mΩ max. (initial value) @ 2-4VDC
100mA for both silver and gold plated contacts.

INSULATION RESISTANCE: 1,000 MΩ min./500VDC

DIELECTRIC STRENGTH: 1,500 Vrms min.@sea level.(initial value)

OPERATING TEMPERATURE: -30°C to 85°C.

MATERIALS

CASE: NYLON (UL94v-0)

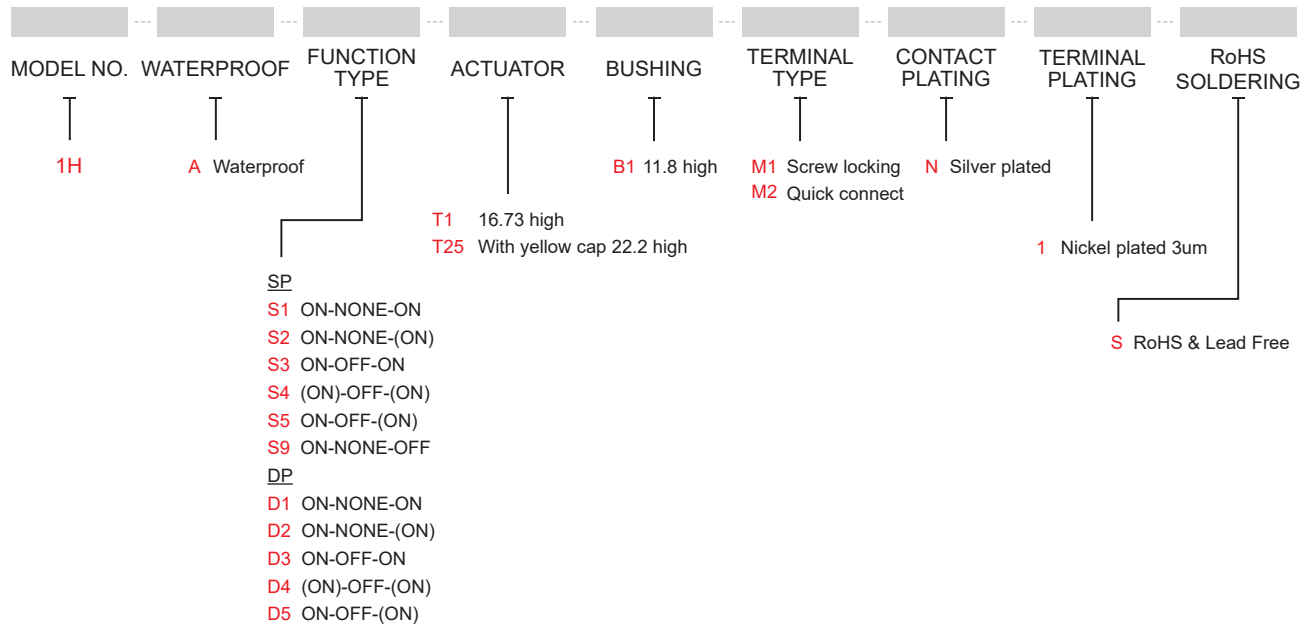
ACTUATOR: Brass, Tin-Cobalt alloy over Ni plated.

BUSHING: Zinc+Silicon.

CONTACT: Copper, Silver plated.

TERMINAL: Copper, Nickel plated.

HOW TO ORDER



EXAMPLE: KSD-1HAS1T1B1M1N1S



IP 67
ACCORDING TO
EN 60529:1991+A1:2001
IEC 60529:2001

C_{RU} US
E 187490

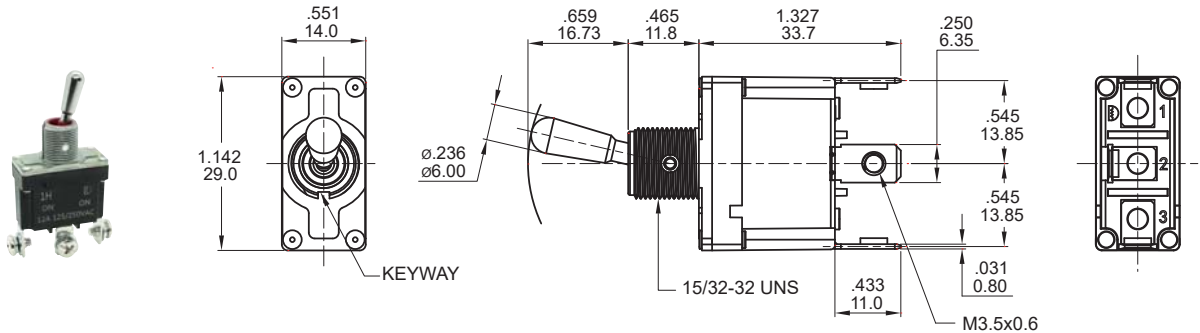


▼ SWITCH FUNCTION

NO. POLES	TYPE	SWITCH FUNCTION			CONNECTED TERMINALS / SCHEMATIC		
		POS.1	POS.2	POS.3	POS.1	POS.2	POS.3
SP	S1	ON	NONE	ON		N/A	
	S2	ON	NONE	(ON)			
	S3	ON	OFF	ON			
	S4	(ON)	OFF	(ON)			
	S5	ON	OFF	(ON)			
	S9	ON	NONE	OFF		N/A	
DP	D1	ON	NONE	ON		N/A	
	D2	ON	NONE	(ON)			
	D3	ON	OFF	ON			
	D4	(ON)	OFF	(ON)			
	D5	ON	OFF	(ON)			

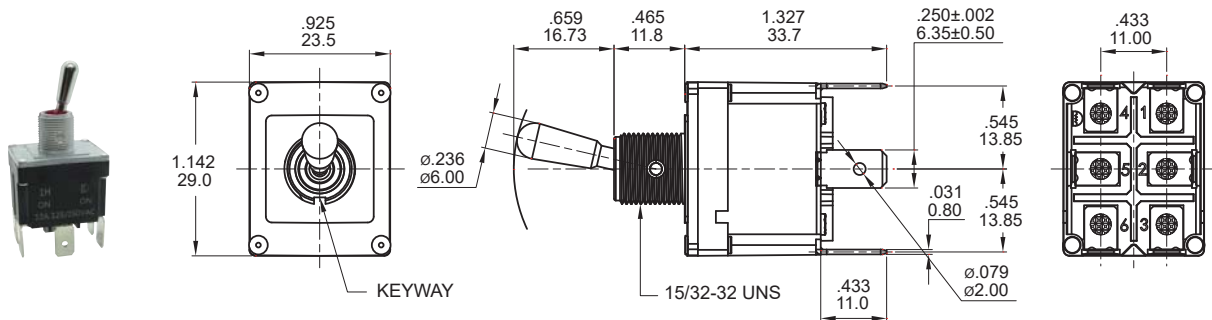
()=MOMENTARY

▼ POLE OPTIONS



SPDT

Model name. KSD-1HAS1T1B1M1N1S



DPDT

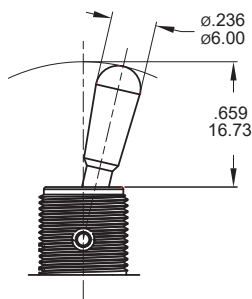
Model name. KSD-1HAD1T1B1M2N1S



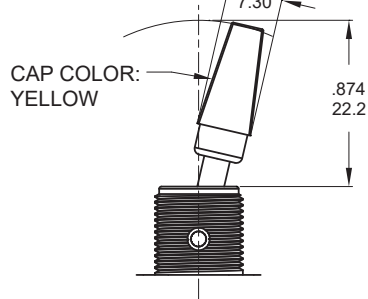
KSD-1H
Toggle Switches

▼ ACTUATOR & BUSHING OPTIONS

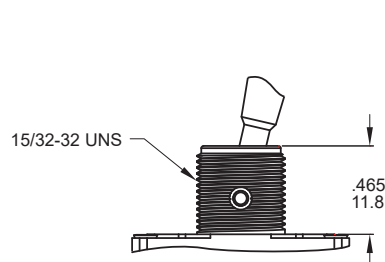
T1 STD



T25

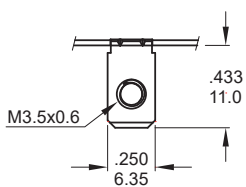


B1 STD



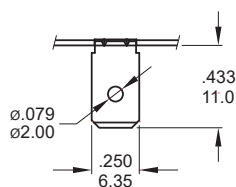
▼ TERMINAL OPTIONS & PANEL MOUNTING

M1 Screw locking



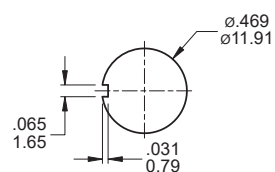
.031inch(0.80mm) THK.

M2 Quick connect

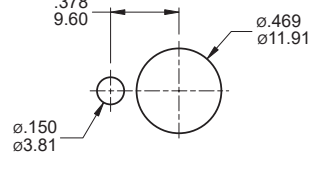


.031inch(0.80mm) THK.

15/32 IN BUSHING



Without locking ring (Keyway)



With standard locking ring.

▼ HARDWARE

EXAMPLE: MNU1M07 - Model name.

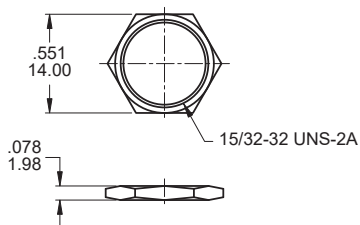
5 Standard hardware

* Standard : 2 nut, 1 locking ring, 1 lockwasher

* For further information please consult sales representative.

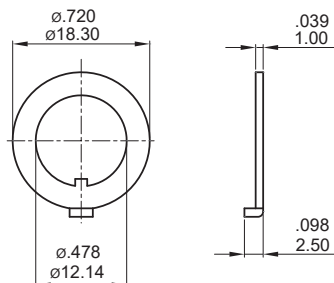
15/32 NUT (Std.)

Model name. MNU1M07



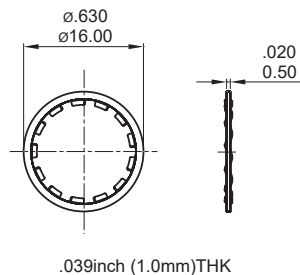
LOCKING RING (Std.)

Model name. NV-MNU-1M08-ZB



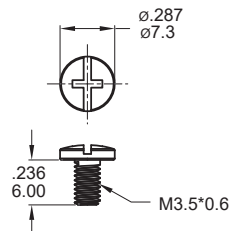
LOCKWASHER (Std.)

Model name. MNU-1M74



M3.5 SCREW (Std.)

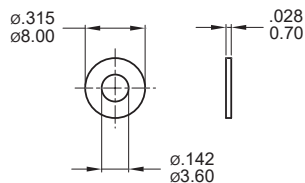
Model name. MNU-1H02



For M1 Terminal

WASHER (Std.)

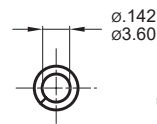
Model name. MNU-1H01



For M1 Terminal

SPRING WASHER (Std.)

Model name. MNU-1H05



For M1 Terminal

▼ SOLDERING PROCESS

MANUAL SOLDERING: Use 30 watts soldering iron and controlled the temperature at 350°.

Duration of solder immersion: Max. 5 sec.

WAVE SOLDERING: Recommend soldering temperature: 260 ± 5°C

Duration of solder immersion: Max. 5 sec. (PCB thickness is 1.6mm)