



# KSD

## SWITCH CONNECTOR



### SPECIFICATIONS

**RATING:** DC9V,1A

**MECHANICAL LIFE:** S7/D7: 20,000 cycles  
SL/DL: 10,000 cycles  
37/3L: 30,000 cycles

**CONTACT RESISTANCE:** 50 mΩ max. / 30mΩ max. (FK37/3L)

**INSULATION RESISTANCE:** DC 500V 100MΩ min.

**DIELECTRIC STRENGTH:** 1,000 V RMS.@sea level. (initial value)  
500V RMS @sea level.(FK37/3L)

**OPERATING FORCE:** S7: 1.7±0.7Kgf  
SL: 1.0±0.7Kgf (LOCK)  
D7: 2.5±0.8Kgf  
DL: 1.6±0.5Kgf (LOCK)  
37/3L: 3.0±0.8Kgf

**OPERATING TEMPERATURE:** -10°C to 70°C.

### MATERIALS

**CASE:** Diallyl phthalate,RED (DAP) (UL94v-0).

**CAP:** Brass, nickel plated.

**BUSHING:** Brass, nickel plated.

**HOUSING:** Stainless Steel.

**TERMINAL/CONTACT:** Brass, silver plated.

## HOW TO ORDER

MODEL NO.	ACTUATOR	BUSHING	CASE COLOR	TERMINAL TYPE	TERMINAL PLATING	SEAL	RoHS SOLDERING
<b>SP</b> <b>FKS7</b> ON-(ON) <b>FKSL</b> ON-ON	<b>P10</b> 2.7 high	<b>B1</b> 12.0 high	<b>C2</b> Black <b>C3</b> Red **	<b>M1</b> Solder Lug <b>M2</b> PC thru-hole	<b>Q</b> Silver	<b>E</b> EPOXY (std)	<b>S</b> Rohs & Lead Free
<b>DP</b> <b>FKD7</b> ON-(ON) <b>FKDL</b> ON-ON							
<b>3P</b> <b>FK37</b> ON-(ON) <b>FK3L</b> ON-ON	<b>P20</b> 5.0 high *	<b>B2</b> 11.5 high * keyway (thd)					

\* P20 actuators are only available with B2 bushing.

\*\* SP and DP types are only available for C3 case.

EXAMPLE:  
FKS7P10B1C3M1QES  
FK3LP20B2□M1QES

Case color

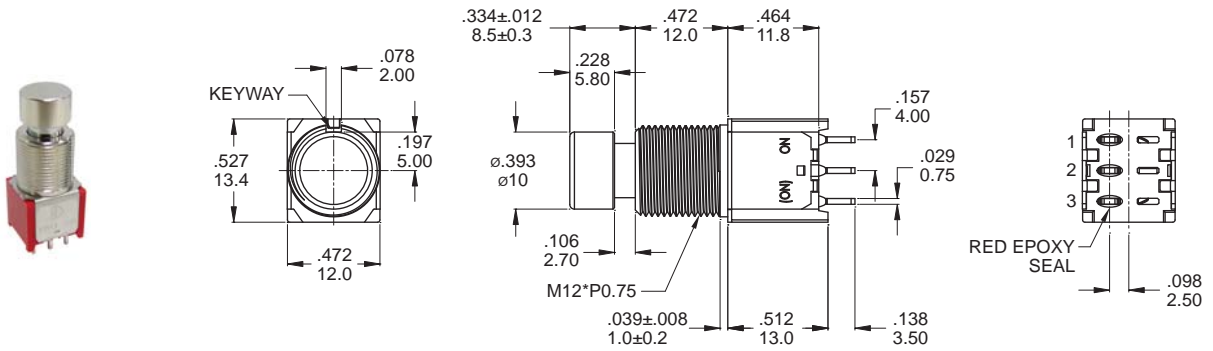


## ▼ SWITCH FUNCTION

NO. POLES	MODEL NO.	SWITCH FUNCTION		CONNECTED TERMINALS / SCHEMATIC	
		POS.1	POS.2	POS.1	POS.2
SP	FKS7	ON	(ON)	2-1	2-3
	FKSL	ON	ON		
DP	FKD7	ON	(ON)	2-1,5-4	2-3,5-6
	FKDL	ON	ON		
3P	FK37	ON	(ON)	2-1,5-4,8-7	2-3,5-6,8-9
	FK3L	ON	ON		

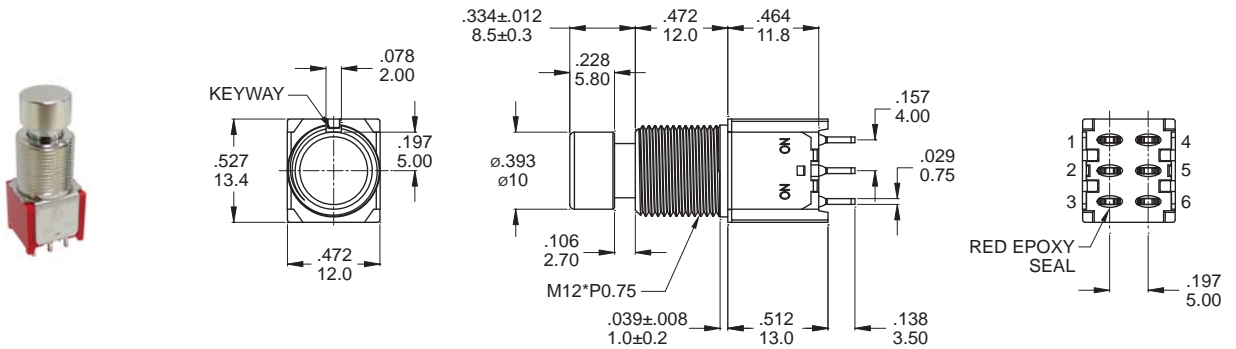
( ) =MOMENTARY

## ▼ POLE OPTIONS



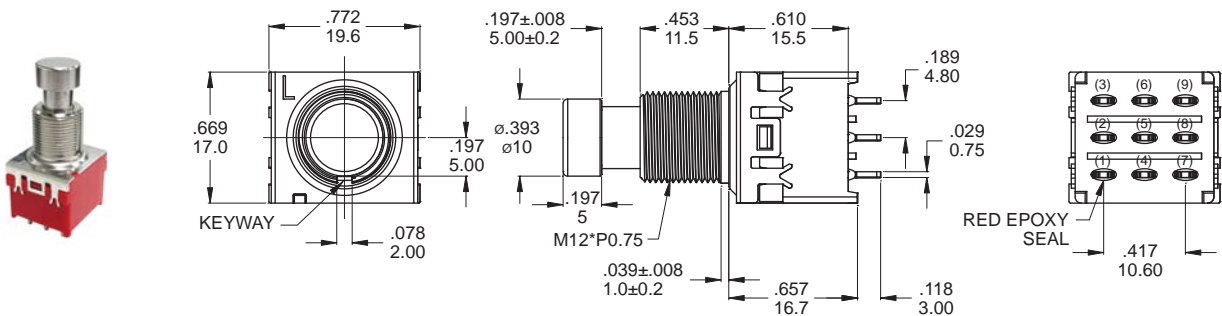
**SPDT**

Model name. KSD-FKS7P10B1C3M1QES



**DPDT**

Model name. KSD-FKDL10B1C3M2QES

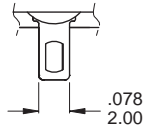


**3PDT**

Model name. KSD-FK3LP20B2C3M2QES

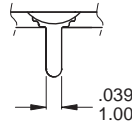
## ▼ TERMINAL OPTIONS & PCB MOUNTING

### M1 Solder lug

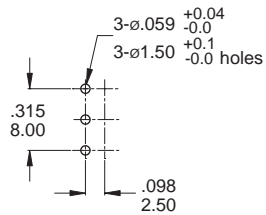


.029inch (0.75mm)THK

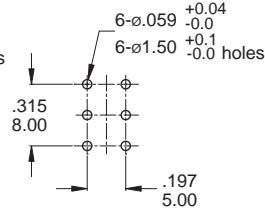
### M2 PC Thru-hole



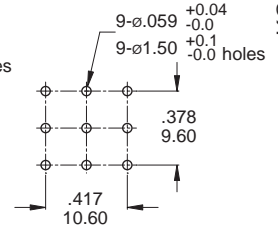
.029inch (0.75mm)THK



SP



DP



3P

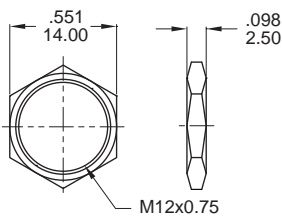
## ▼ HARDWARE

EXAMPLE: Model name. 5 Standard hardware

\* Standard hardware : 2 nut, 1 locking ring, 1 lockwasher  
\* For further information please consult sales representativity.

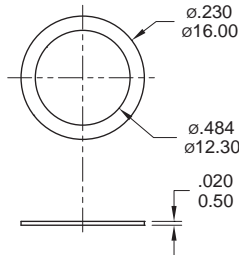
### NUT (Std.)

Model name. MNU-PA03



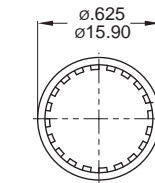
### WASHER (Std.)

Model name. NU-7K01

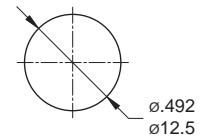


### LOCKWASHER (Std.)

Model name. NU-1M09



.039inch (1.0mm)THK



PANEL MOUNTING

## PUSHBUTTON SWITCH

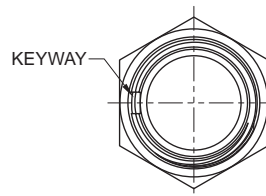
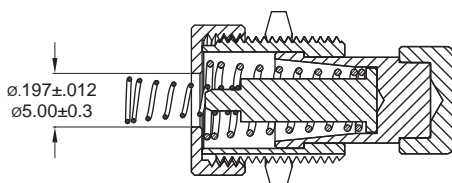
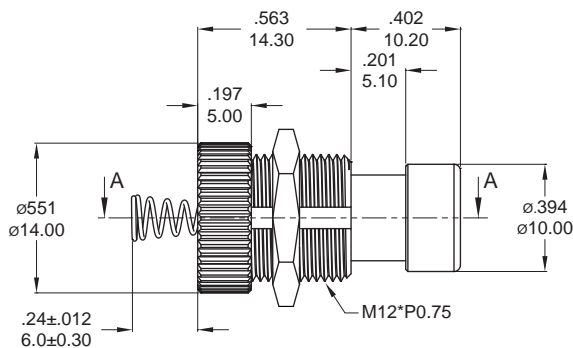
### SPECIFICATIONS

**LIFE CYCLES:** 20,000 cycles.

**OPERATING FORCE:** 650±200gf

- \* Working force of bushing with nut: Test with torsion meter and increase torsion over 8kgf
- \* Keep the nut's torsional strength in 8kgf
- \* 1pcs nut/per pack

## ▼ DIMENSION



Model name. KSD-FK-P1B1-5

## HOW TO ORDER

