





## ▼ CIRCUIT

### SINGLE POLE

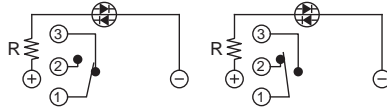
Without LED



Position 1

Position 2

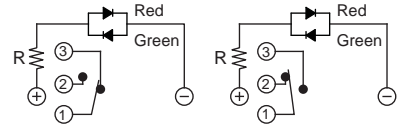
Single Color LED



Position 1

Position 2

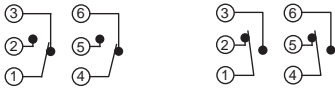
Dual Color LED



Position 1

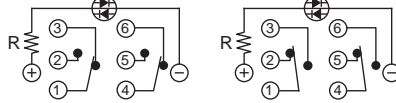
Position 2

### DOUBLE POLE



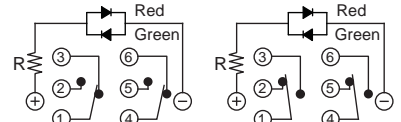
Position 1

Position 2



Position 1

Position 2

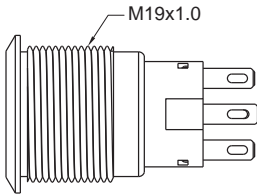


Position 1

Position 2

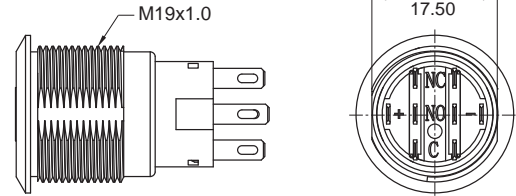
## ▼ BODY OPTIONS

A0 / B1 / B2 / C3 Round



Not available for light type P and E1.

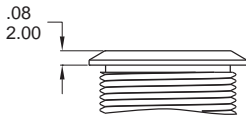
D0 / E1 / E2 / F3 Double flat



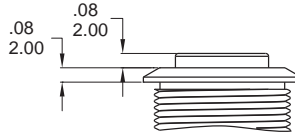
Available with light type P and E1 only.

## ▼ BUTTON OPTIONS

F Flat (std)

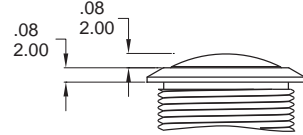


H High



Not available for light type E and E1.

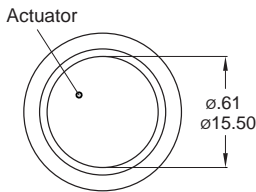
R Round, No LED



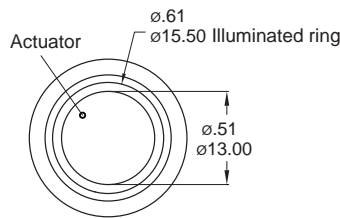
Standard for A0 body type .

## ▼ LIGHT OPTIONS

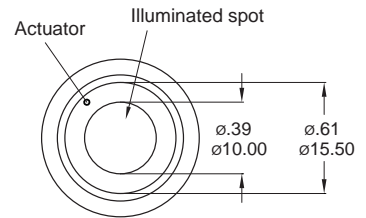
O Without LED



R Ring (Fixed)

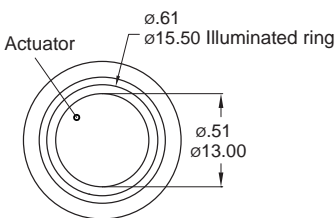


D Spot

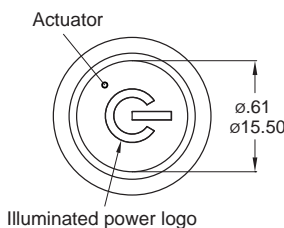


Not available for brass body type.

E Ring (Moveable)

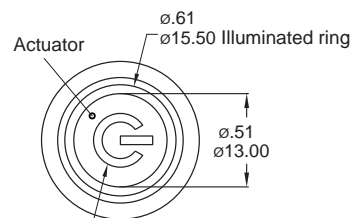


P Power logo \*



Illuminated power logo

E1 Ring (Moveable)+Power logo \*



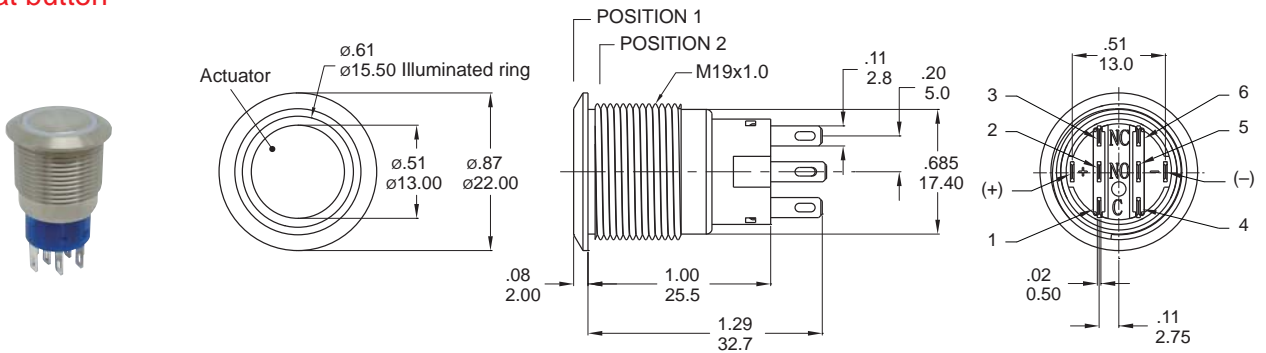
Illuminated power logo

Available with flat button only.

\* Note: Available with double flat body type only.

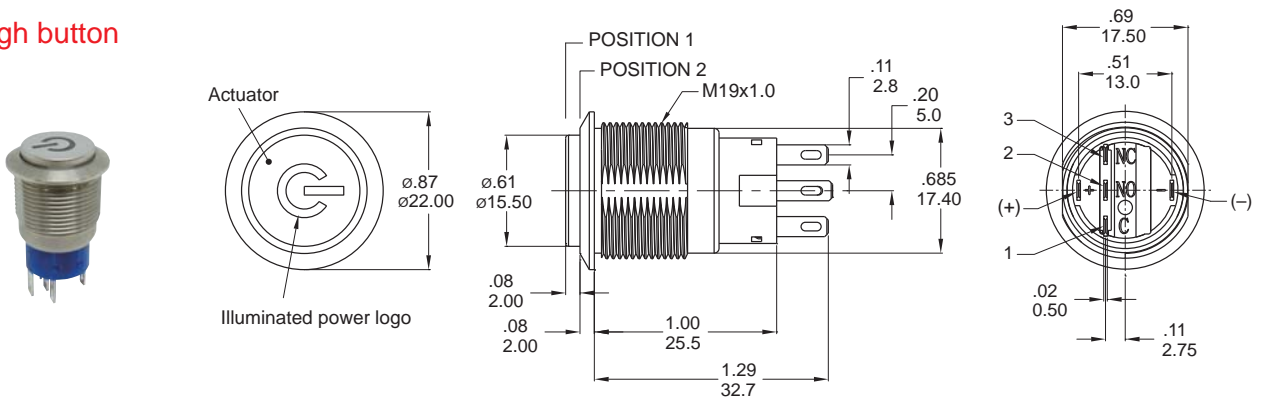
## ▼ DIMENSION

### Flat button



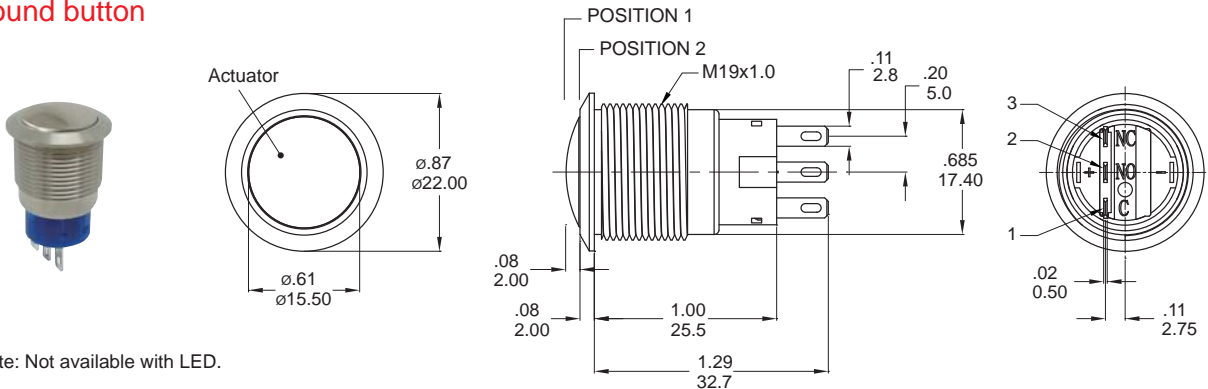
Model name. KSD-MPB19-A0F20E-112-JQ

### High button



Model name. KSD-MPB19-D0H10P-112-JQ

### Round button

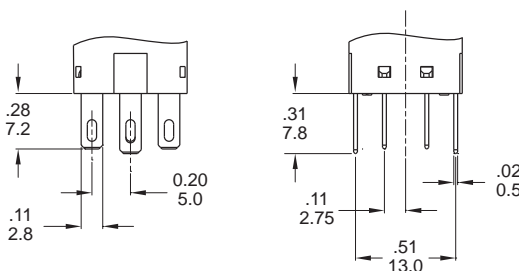


Note: Not available with LED.

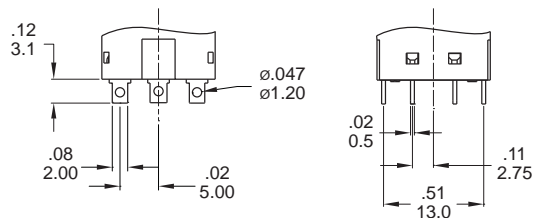
Model name. KSD-MPB19-A0R100-JQ

## ▼ TERMINAL OPTIONS

### J Solder terminal (std)



### S Short solder terminal





IP 67  
ACCORDING TO  
EN 60529:1991+A1:2001  
IEC 60529:2001



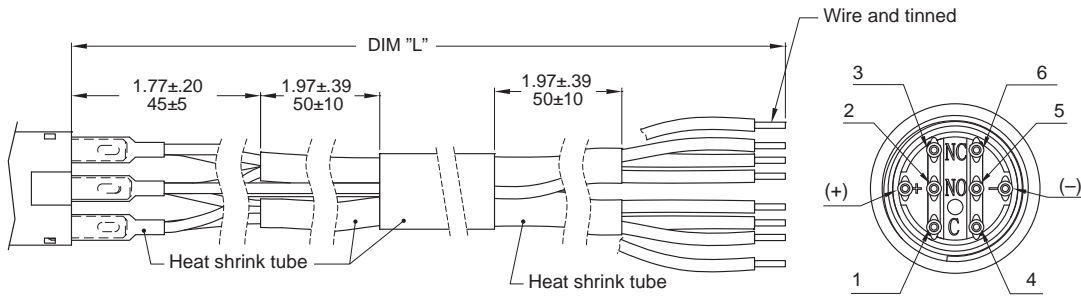
## ▼ WIRE OPTIONS

**TX** Wire leads UL3385 18 AWG (Flying lead Terminal)

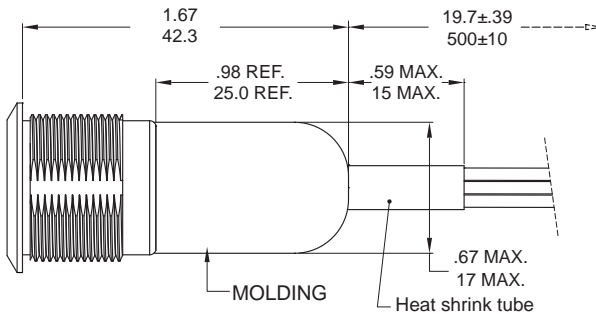
Wires

CODE	DIM "L"
T1	500
T2	1000
T3	1500
T4	2000

Units: mm



**D1** Molding, 500mm wire leads UL3385 18 AWG



Wires:

Yellow wire - Terminal 1 and 4

Purple wire - Terminal 2 and 5

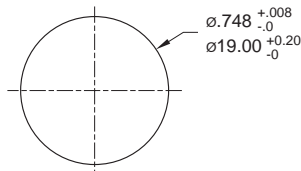
Green wire - Terminal 3 and 6

Red wire - LED (+) Positive

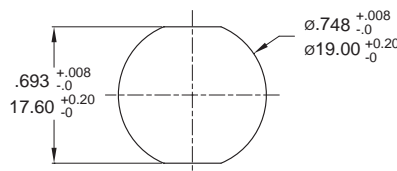
Black wire - LED (-) Negative

\* Please consult sales for additional wire options.

## ▼ PANEL MOUNTING



Round



Double flat

Panel thickness:  
.394inch(10.0 mm) MAX.

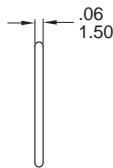
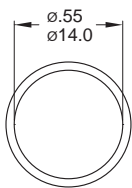
## ▼ HARDWARE

\* Standard hardware : 1 nut, 1 O-ring

\* For further information please consult sales representativity.

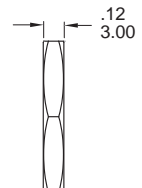
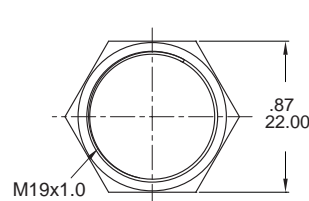
**O-RING (Std.)**

Model name. FCP-PY02



**NUT (Std.)**

Model name. MNU-MPB01



## ▼ O-RING INSTALLATION

