



KSD

SWITCH CONNECTOR



SPECIFICATION

MAX. CURRENT/VOLTAGE RATING WITH RESISTIVE LOAD :

400mA 32VAC - 200 mA 50VDC - 125 mA 125VAC.

INITIAL CONTACT RESISTANCE : 50mΩmax.

INSULATION RESISTANCE : 1GΩmin.at 500VDC.

DIELECTRIC STRENGTH : 1,500 VAC rms. (initial value)

ELECTRICAL LIFE AT FULL LOAD : 500,000 cycles.

OPERATING TEMPERATURE : -30°C to 85°C.

TOTAL TRAVEL : 1.5 mm(.059)

OPERATING FORCE : 3N~6N

CONTACT BOUNCE : 10 ms.

MECHANICAL LIFE : 1,000,000 cycles.

TORQUE : 0.5 Nm max.

INGRESS PROTECTION: IP68 (In house test)

MATERIALS

CAP: Polyamide 6/6.

PLUNGER: PFS6: PC

PFS7: Polyamide 6/6.

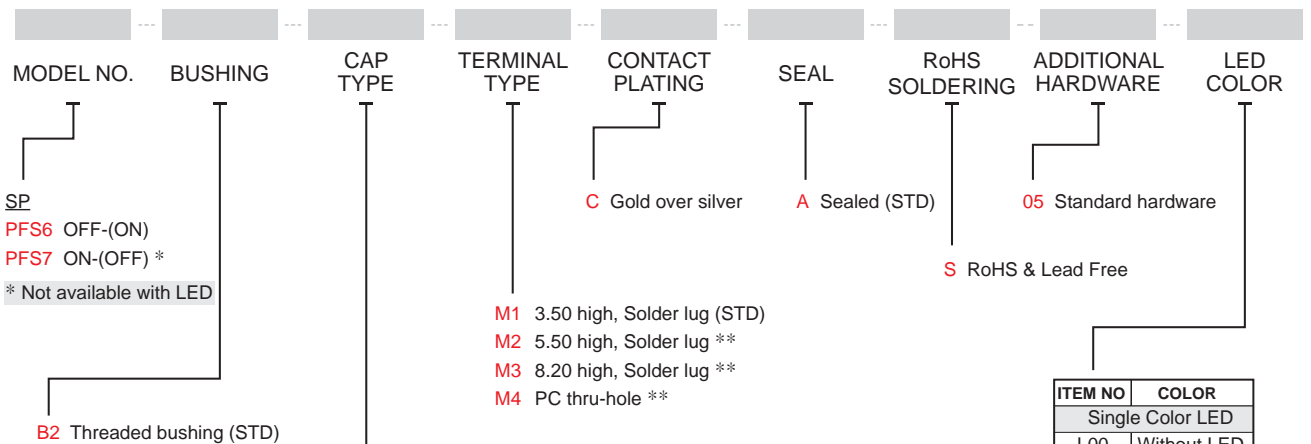
RUBBER: Silicone.

BUSHING: Polyamide 6/6.

CASE: Diallyl phthalate (DAP)(UL94v-0).

TERMINAL/CONTACTS: Brass with gold over silver plated.

HOW TO ORDER



ITEM NO	COLOR
Single Color LED	
L00	Without LED
L01	White
L03	Red
L05	Yellow
L06	Green
L07	Blue
Dual Color LED	
L36	Red+Green

CAP COLOR	ITEM NO.		
	Flat(std.)	Round	High
White	01M	A1S	G1S
Black (Std)	02M	A2S	G2S
Red (Std)	03M	A3S	G3S
Yellow	05M	A5S	G5S
Green	06M	A6S	G6S
Blue	07M	A7S	G7S

Note: Our standard is with flat cap.

1.LED is only available with flat cap.

2.Round and high caps are only available with without LED.

** Terminal M2~M4 are only available with PFS6 without LED.

*** Except standard color, for other colors information please consult sales representativity.

EXAMPLE:

PFS6B2 □ M1CAS05L00(STD)

Cap type

PFS6B2 □ M1CAS05 □ (STD)

LED color

Flat cap color

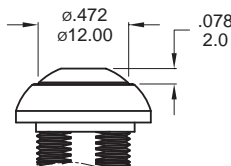
▼ SWITCH FUNCTION

NO. POLES	MODEL NO.	SWITCH FUNCTION		CONNECTED TERMINALS / SCHEMATIC	
		POS.1	POS.2	POS.1	POS.2
SP	PFS6	OFF	(ON)	OPEN	CLOSE
SP	PFS7	ON	(OFF)	CLOSE	OPEN

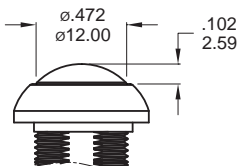
()=MOMENTARY

▼ CAP OPTIONS

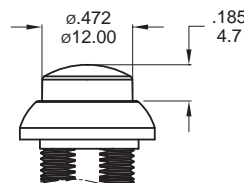
FLAT STD



ROUND No LED *



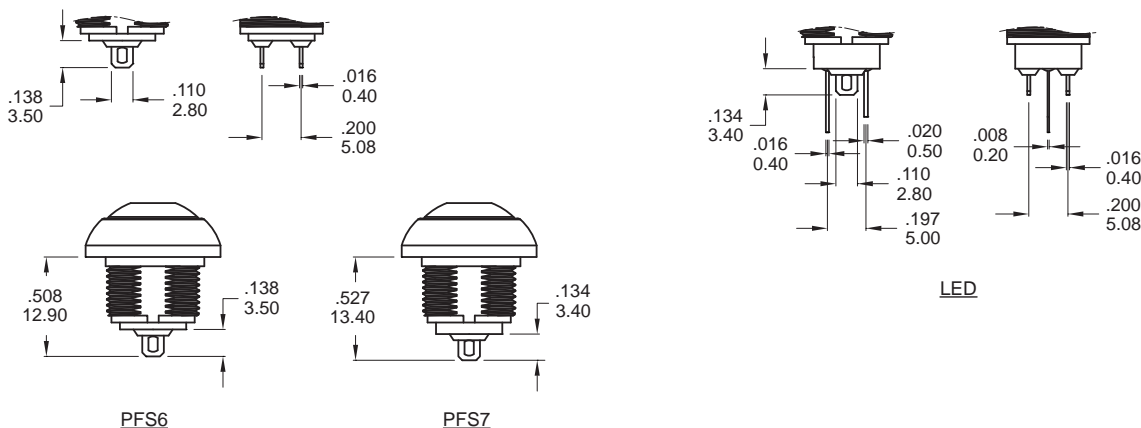
HIGH No LED *



* Note: Round and high caps are not available for Square threaded bushing.

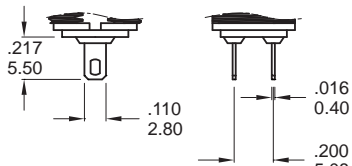
▼ TERMINAL OPTIONS

M1 Solder lug (STD)

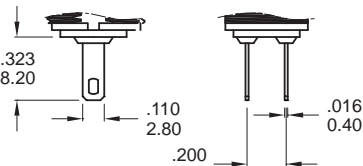


Note: Not available with LED

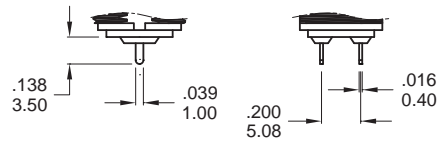
M2 Solder lug



M3 Solder lug

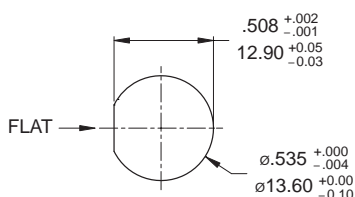


M4 PC Thru-hole



Note: Terminal M2~M4 are only available with PFS6 without LED.

▼ PANEL MOUNTING

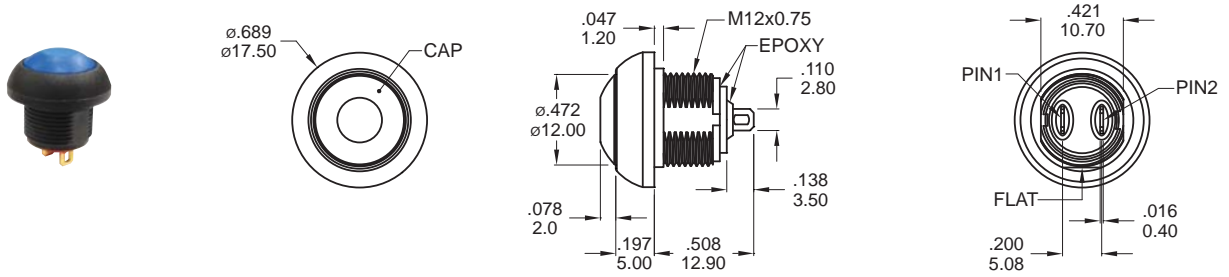


Panel thickness:
1.5 mm (.059inch) min. -4 mm (.157inch) max.



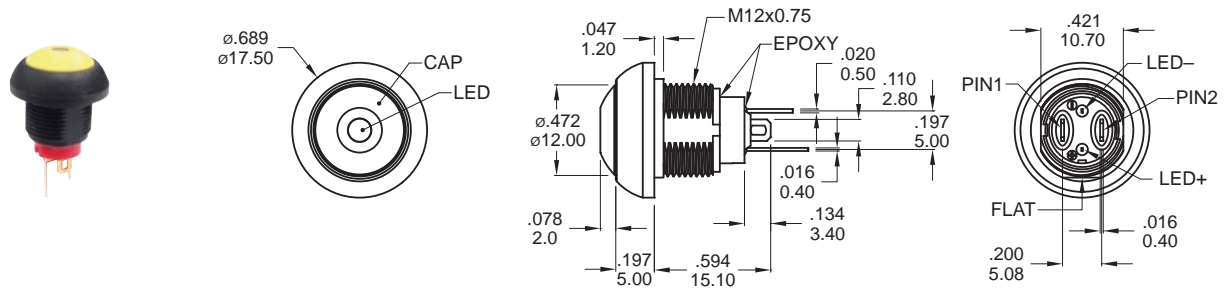
KSD-PF Pushbutton Switches

▼ DIMENSION



SPST

Model name. KSD-PFS6B207MM1CAS05L00



Note: LED is only available with flat cap

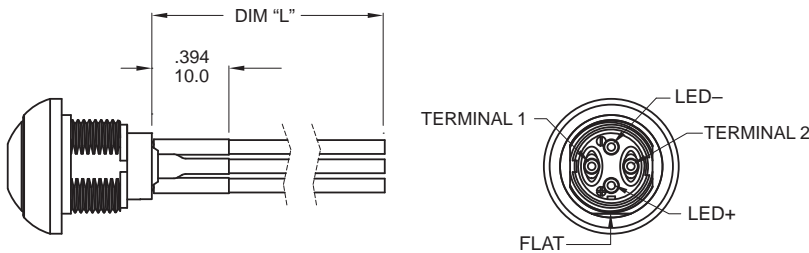
SPST

Model name. KSD-PFS6B205M1CAS05L01

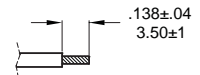
▼ WIRE OPTIONS

YXXX Wire leads 20 AWG

EXAMPLE: Y001 - □
Model name. Wire code

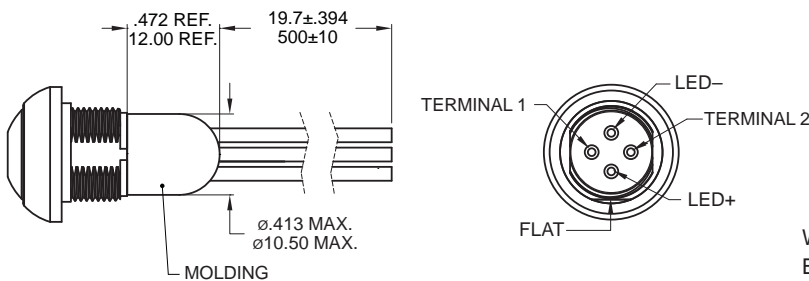


CODE	DIM "L"
Y001	500±10(19.7±.394)
Y002 *	90±5(3.54±.197)
Y003	100±5(3.94±.197)
D001	500±10(19.7±.394)



* Stripping wire for code Y002.

D001 Molding, 500mm wire leads 20 AWG



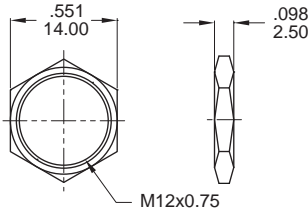
Wires:
 Black wire - Terminal
 Red wire - LED (+) Positive
 Green wire - LED (-) Negative
 * No Illumination: Black Wire - Terminal
 * Please consult sales for additional wire options.

▼ HARDWARE

- * Standard hardware : 1 nut, 1 O-ring, 1 lockwasher
- * For further information please consult sales representativity.

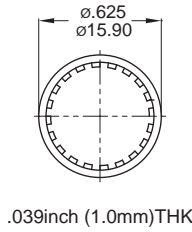
NUT (Std.)

Model name. KSD-MNU-PA03



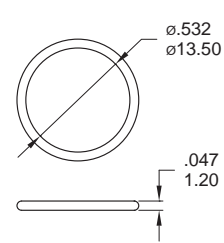
LOCKWASHER (Std.)

Model name. KSD-MNU-1M09



O-RING (Std.)

Model name. KSD-FCP-A253



▼ SOLDERING PROCESS

MANUAL SOLDERING: Use 30 watts soldering iron and controlled the temperature at 350°.

Duration of solder immersion: Max. 5 sec.

WAVE SOLDERING: Recommend soldering temperature: 260 ± 5°C

※ Ambient temperature of the PC board solder surface 110°C max.

Duration of solder immersion: Max. 5 sec. (PCB thickness is 1.6mm)

IP 68 for the whole series:
Protected against the effects
of immersion up to 1 m water (60min)

