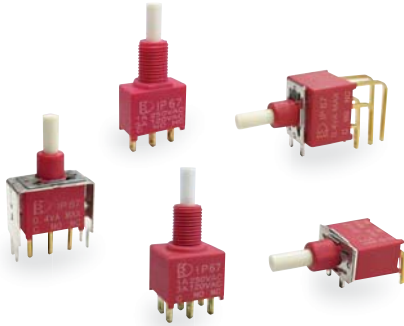




KSD

SWITCH CONNECTOR



SPECIFICATIONS

CONTACT RATING: Dependent upon contact material. See page 110.

MECHANICAL LIFE: 50,000 make-and-break cycles.

CONTACT RESISTANCE: 20 mΩ max. (initial value) @ 2-4VDC
100mA for both silver and gold plated contacts.

INSULATION RESISTANCE: 1,000 MΩ min./1000VDC

DIELECTRIC STRENGTH: 1,000 Vrms min. @sea level. (initial value)

OPERATING TEMPERATURE: -40°C to 85°C.

CAP INSTALLATION FORCE: 10 lbs,max.permmissible.

MATERIALS

CASE & BUSHING : Glass filled Nylon 6/6, flame retardant, heat stabilized (UL 94v-0).

PLUNGER: Glass filled Nylon or Glass filled polyester (UL 94v-0).

SWITCH SUPPORT: Brass or steel, tin plate.

SWITCH SUPPORT RETAINER: Stainless steel.

CONTACTS : Phosphor bronze with silver coin.

ALL TERMINALS : Brass with silver or gold plated. (See page 110)

TERMINAL SEAL : Epoxy.

HOW TO ORDER

MODEL NO.	PLUNGER	BUSHING	TERMINAL TYPE	TERMINAL PLATING	SEAL	RoHS SOLDERING
SP 7AS7 ON-(ON)	P1 7.11 high (std) * P2 7.11 high (std) **	B10 8.80 high B40 6.10 high	M1 Solder Lug M2 PC thru-hole M6 Right angle, PC thru-hole *** M6N Right angle, snap-in, PC thru-hole *** M7 Vertical right angle, PC thru-hole *** V-bracket VS2 11.68 high *** V2N 11.68 high, snap-in *** VS3 16.00 high ***	Q Gold flash over silver R Gold C Gold over silver	E EPOXY (std)	S RoHS & Lead Free
DP 7AD7 ON-(ON)						

Note: Plunger cap options see page 105.

- * P1 plunger are only available with B40 bushing.
- ** P2 plunger are only available with B10 bushing.
- *** Terminal M6, M6N, M7 and VS2-3 can only be use with B40 bushing

EXAMPLE:

7AS7P1B40M1QES(STD)

7AS7P2B10M1QES(STD)



KSD-7A Series

Sealed Snap-Acting Pushbutton Switches

IP 67
ACCORDING TO
EN 60529:1991+A1:2001
IEC 60529:2001



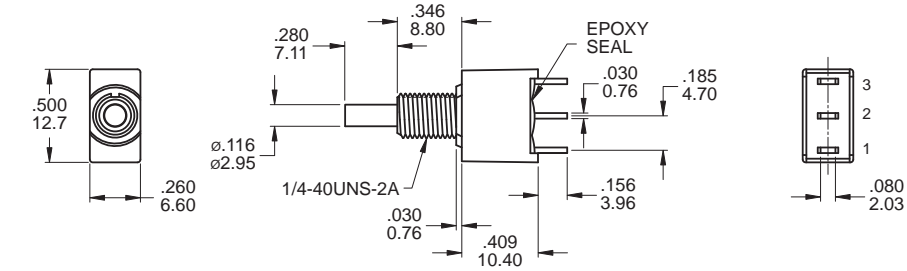
KSD-7A
Pushbutton Switches

SWITCH FUNCTION

NO. POLES	MODEL NO.	SWITCH FUNCTION		CONNECTED TERMINALS / SCHEMATIC	
		POS.1	POS.2	POS.1	POS.2
SP	7AS7	ON	(ON)	1-3 NC 3 — 1 (COMM) — 2 NO	1-2 NC 3 — 1 (COMM) — 2 NO
DP	7AD7	ON	(ON)	1-3,4-6 NC 3 — 1 (COMM) — 2 NO NC 6 — 4 — 5 NO	1-2,4-5 NC 3 — 1 (COMM) — 2 NO NC 6 — 4 — 5 NO

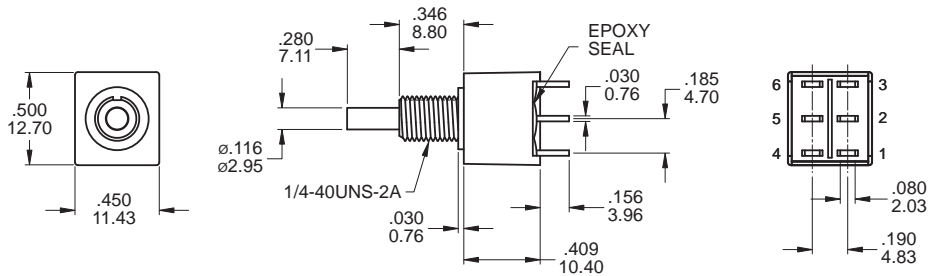
()=MOMENTARY

POLE FUNCTION



SPDT

Model name. KSD-7AS7P2B10M1QES

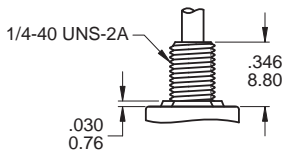


DPDT

Model name. KSD-7AD7P2B10M1QES

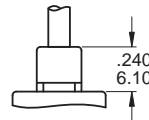
BUSHING OPTIONS

B10



Only available for plunger P2
Note:
1. B10 is standard for terminal M1
2. Standard hardware see page 105.

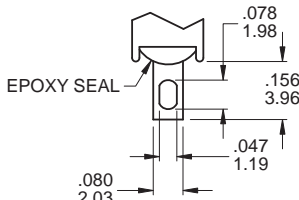
B40



Only available for plunger P1
Note: B40 is standard for terminal M6, M6N, M7 and VS2-3.

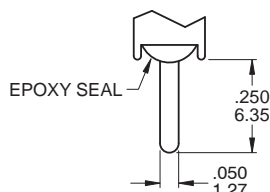
TERMINAL OPTIONS

M1 Solder lug



.030inch(0.76mm)THK

M2 PC Thru-hole



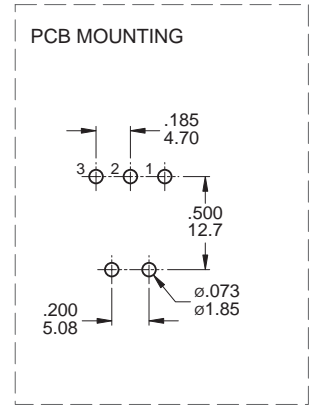
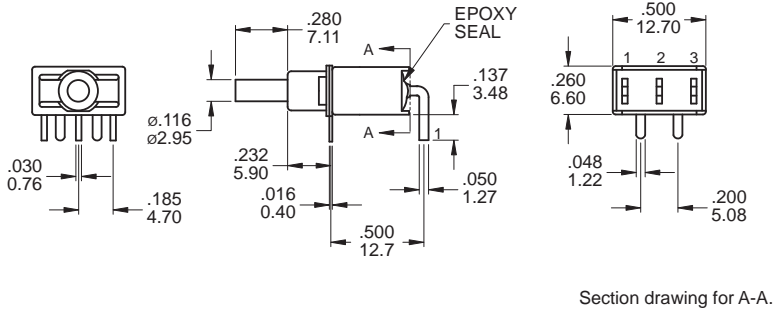
.030inch(0.76mm)THK

OTHER TERMINAL OPTIONS

- M6** Right angle P.C. Mount
- M6N** Right angle P.C. Mount, Snap-in bracket
- M7** Right angle P.C. Mount
- VS2** Vertical bracket P.C. Mount
- V2N** Vertical bracket P.C. Mount, Snap-in bracket
- VS3** Vertical bracket P.C. Mount



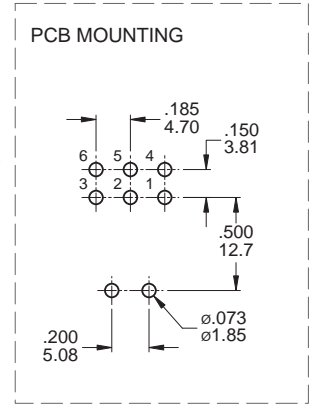
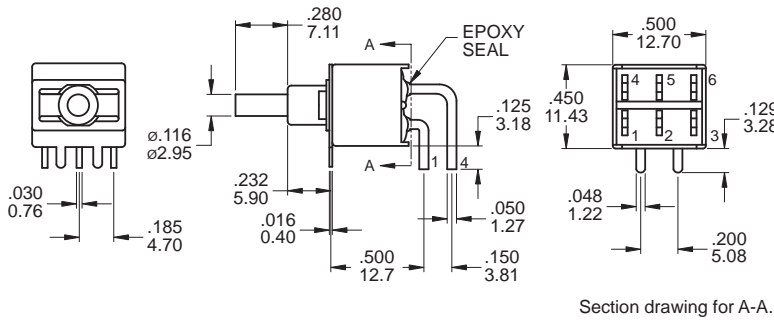
M6
(M6N - Snap-in)



SPDT

Model name. KSD-7AS7P1B40M6RES

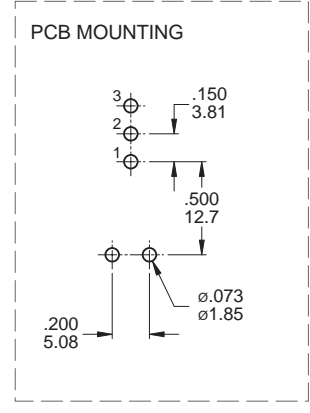
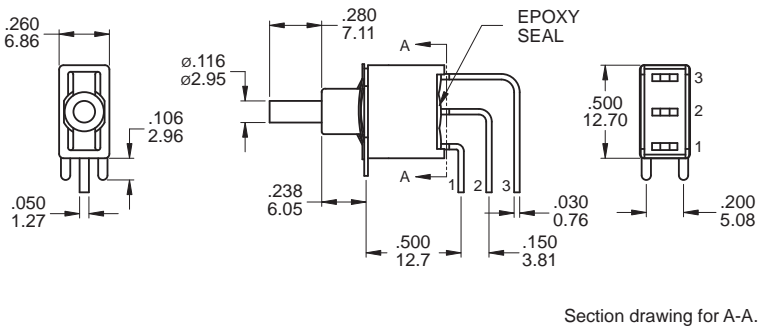
M6
(M6N - Snap-in)



DPDT

Model name. KSD-7AD7P1B40M6RES

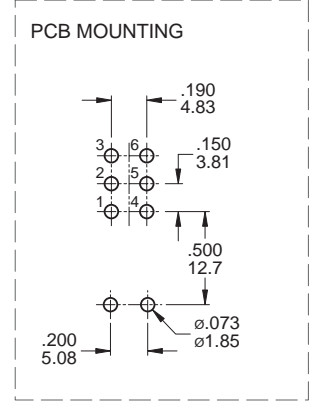
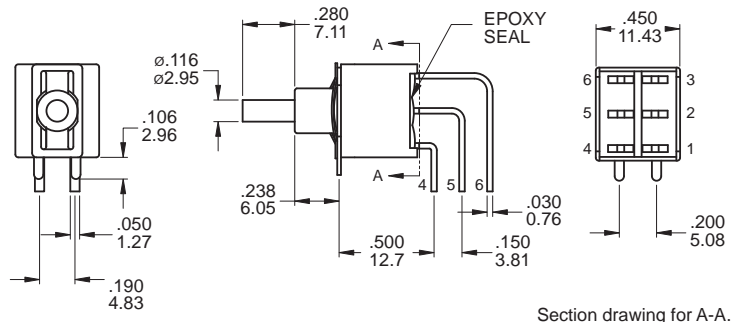
M7



SPDT

Model name. KSD-7AS7P1B40M7RES

M7



DPDT

Model name. KSD-7AD7P1B40M7RES



KSD-7A Series

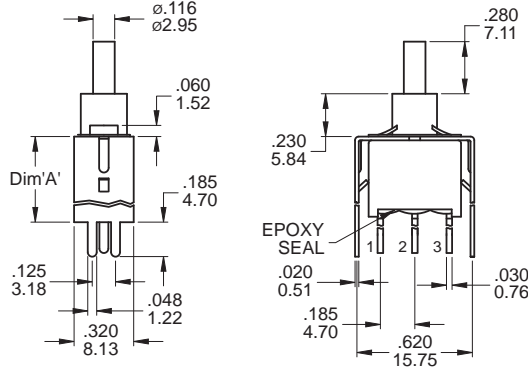
Sealed Snap-Acting Pushbutton Switches

IP 67
 ACCORDING TO
 EN 60529:1991+A1:2001
 IEC 60529:2001

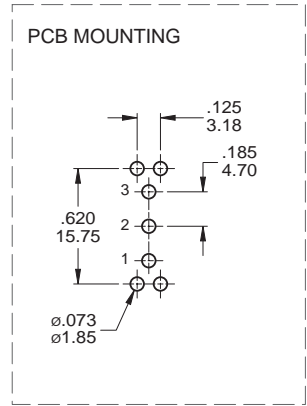


KSD-7A
Pushbutton Switches

VS2 - VS3
(V2N - Snap-in)



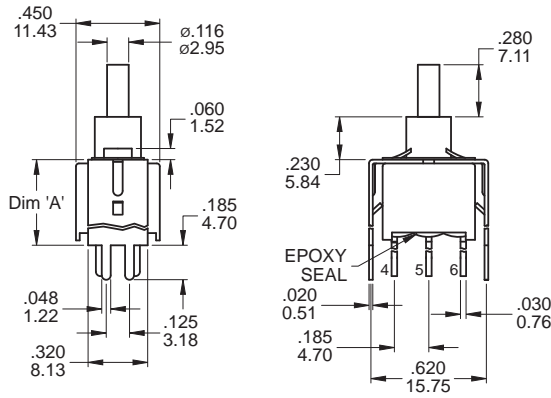
OPTION CODE	DIM. 'A'
VS2 (V2N)	.460 11.68
VS3	.630 16.00



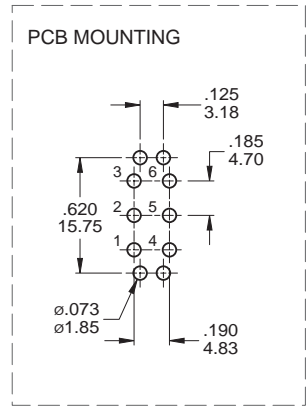
SPDT

Model name. 7AS7P1B40VS2RES

VS2 - VS3
(V2N - Snap-in)



OPTION CODE	DIM. 'A'
VS2 (V2N)	.460 11.68
VS3	.630 16.00

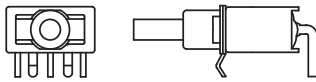


DPDT

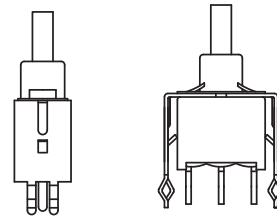
Model name. KSD-7AD7P1B40VS2RES

▼ SNAP-IN TERMINAL OPTIONS

M6N



V2N



▼ CONTACT & TERMINAL PLATING OPTIONS

	CONTACT PLATING	TERMINAL PLATING	RATINGS
Q	Silver	Gold flash over silver	3 Amps with resistant load @ 120VAC or 28VDC 1 Amps with resistant load @ 250VAC
C	Gold over Silver	Gold over silver	
R	Gold	Gold	0.4 Volt - Amps (VA) max. @ 20V max. (AC or DC)

▼ SOLDERING PROCESS

MANUAL SOLDERING: Use 30 watts soldering iron and controlled the temperature at 350°.

Duration of solder immersion: Max. 5 sec.

WAVE SOLDERING: Recommend soldering temperature: 260 ± 5°C

Duration of solder immersion: Max. 5 sec. (PCB thickness is 1.6mm)