



KSD

SWITCH CONNECTOR



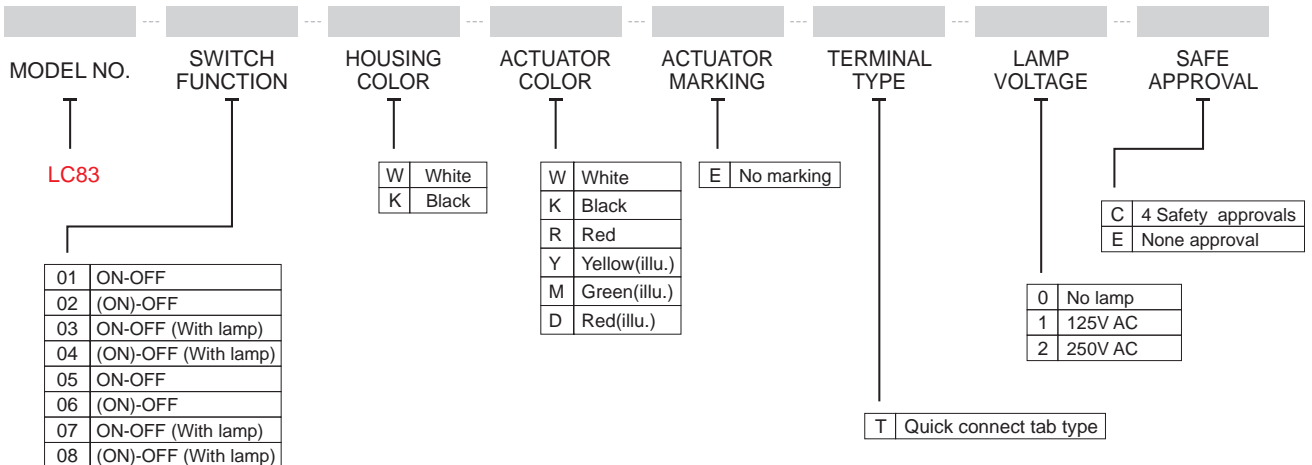
SPECIFICATIONS

- Electrical rating :** 16A 250VAC/125VAC (UL)
10(4)A 250VAC (VDE)
- Mechanical life:** Over 30000 cycles
- Electrical life:** Over 10000 cycles
- Contact resistance:** < 20mΩ
- Insulation resistance:** > 1000MΩ
- High voltage resistance:** > 1500V 1 min.
- Ambient temperature:** Terminal side -20°C to 85°C
Actuating side -20°C to 55°C
- Storage temperature:** -30°C to 80°C Max
- Atmospheric humidity:** Max.85%
- Actuating force:** 3 to 6N (depends on different switch function)
- Flammability:** 94V-2
- Temperature rise at the terminal:** Max 30°C (UL1054)
- Solder ability of terminal:** Max 350°C, 3s



MATERIALS

- Housing:** PA 66
- Rocker:** PC
- Contacts:** Silver alloy
- Terminal:** Copper silver platrd
- Spring:** SUS
- Movable arm:** Copper silver plated
- Lamp:** Neon lamp, Tungsten lamp
- Bracket:** PA66

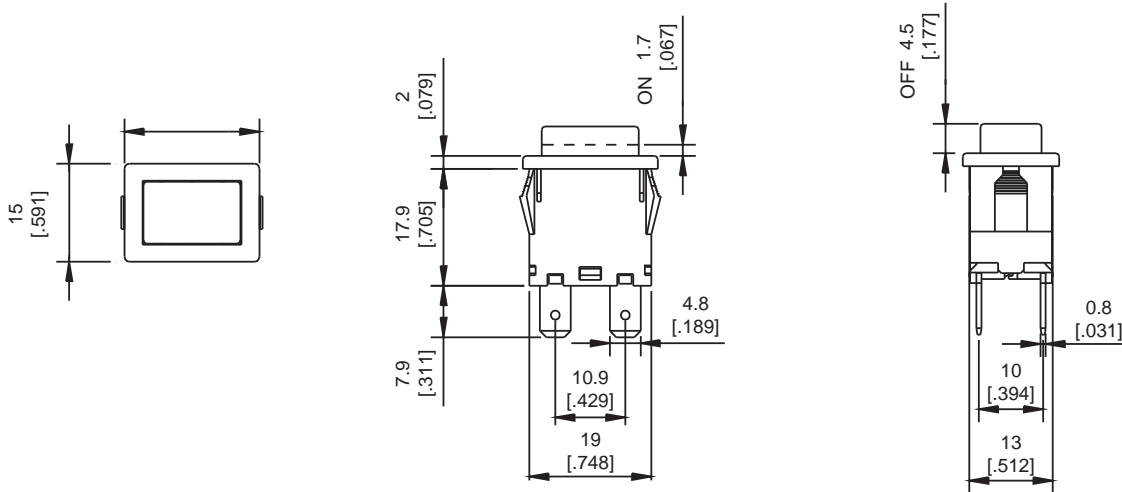
HOW TO ORDER



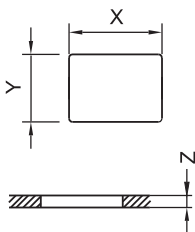
▼ OPTIONS OF SWITCH FUNCTION

Item No	POLES & THROWS	Push button position (): Momentary		
		Down	Center	Up
				
LC8301	SPST	ON	None	OFF
LC8302	SPST	(ON)	None	OFF
LC8303	SPST(with lamp)	ON	None	OFF
LC8304	SPST(with lamp)	(ON)	None	OFF
LC8305	DPST	ON	None	OFF
LC8306	DPST	(ON)	None	OFF
LC8307	DPST(with lamp)	ON	None	OFF
LC8308	DPST(with lamp)	(ON)	None	OFF

▼ DIMENSION

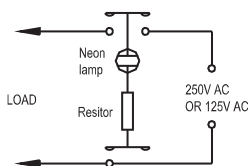


▼ PANEL CUT OUT

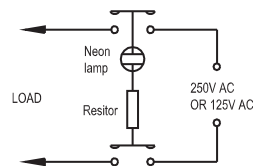


Z	Y	X
0.70~1.25	12.90~13.00	19.10~19.20
1.25~2.00	12.90~13.00	19.30~19.40
2.00~3.00	12.90~13.00	19.50~19.60

▼ CIRCUITS FOR SWITCH WITH LAMP



CIRCUITS FOR LC8303 AND LC8304



CIRCUITS FOR LC8307 AND LC8308