



KSD

SWITCH CONNECTOR



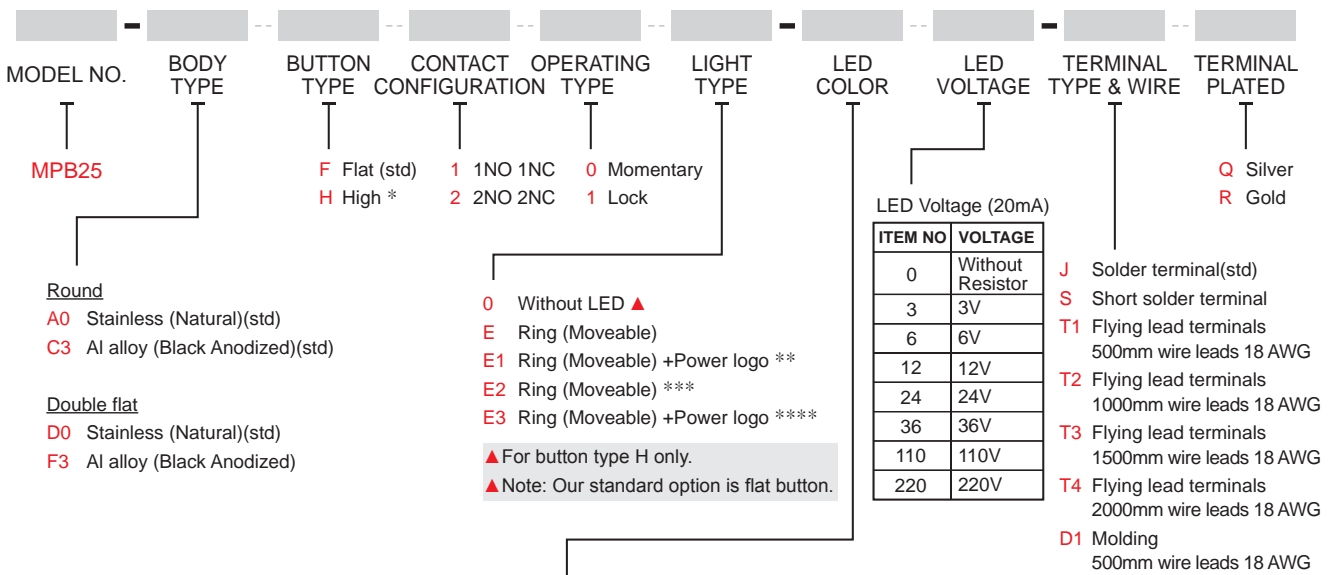
SPECIFICATIONS

- RATING** : 1th 5A/250VAC resistive load 3A/250VAC
- CONTACT RESISTANCE** : 50 mΩ max. @ 1A 12VDC (initial value)
- INSULATION RESISTANCE** : 1,000 MΩ min. at 500VDC
- DIELECTRIC STRENGTH** : 2,000V RMS @ sea level
- OPERATION TEMPERATURE** : -20°C to 55°C
- MECHANICAL LIFE** : Momentary 1,000,000 cycles
Self-lock 500,000 cycles
- ELECTRICAL LIFE** : 50,000 make-and-break cycles at full load
- TORQUE** : 5~14Nm
- OPERATION PRESSURE** : 1Pole 2.5±1N / 2Poles 3.5±1N
- TRAVEL** : About 3.2mm
- INGRESS PROTECTION** : IP67, IK08(Stainless)

MATERIALS

- BUSHING** : Stainless Steel / Aluminum alloy
- BASE** : PBT(UL 94-V0) , PC(UL 94-V2)
- ACTUATOR** : PC; Stainless Steel / Aluminum alloy
- INNER ASSEMBLY** : POM / PA66.
- SPRING** : Spring steel.
- SEALING** : Silicone.
- O-Ring** : Silicone.
- TERMINAL** : Brass, silver or gold plated.
- CONTACT** : Brass, coin silver, silver or gold plated.
- HEX NUT** : Nickel plated brass

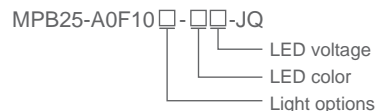
HOW TO ORDER



ITEM NO	COLOR
Single Color LED	
0	Without LED
1	White
3	Red
5	Yellow
6	Green
7	Blue
Dual Color LED	
A	Red+Green
B	Red+Blue
D	Blue+Yellow
G	Red+Yellow
H	Green+Yellow
J	Orange+Green
P	Blue+Green

- * Button type H is only available with aluminum body without LED.
- ** 1. Light type E1 is only available with D0 body type.
2. Only white ring with all led color.
- *** Light type E2 with LED is only available with color red/green/blue and A0 body type.
- **** Light type E3 with LED is only available with color red/green/blue and D0 body type.
- ***** For other colors information please consult sales representativity.

EXAMPLE:
MPB25-A0F10E-JQ (Without LED)





▼ CIRCUIT

SINGLE POLE

Without LED

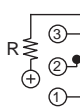


Position 1

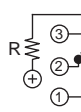


Position 2

Single Color LED

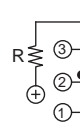


Position 1

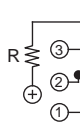


Position 2

Dual Color LED

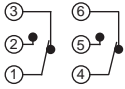


Position 1

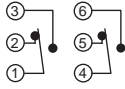


Position 2

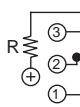
DOUBLE POLE



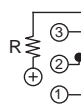
Position 1



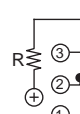
Position 2



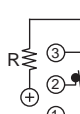
Position 1



Position 2



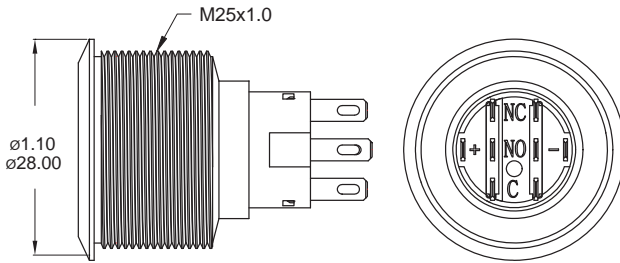
Position 1



Position 2

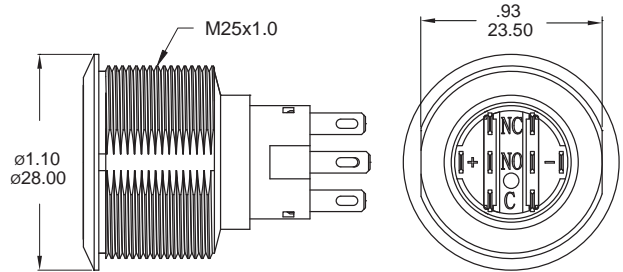
▼ BODY OPTIONS

A0 / C3 Round



Not available for light type E1 and E3.

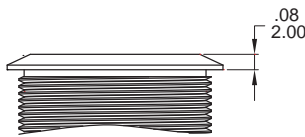
D0 / F3 Double flat



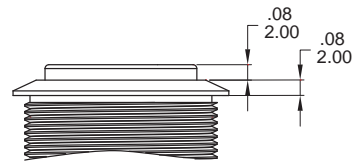
Available with light type E1 and E3 only.

▼ BUTTON OPTIONS

F Flat (std)



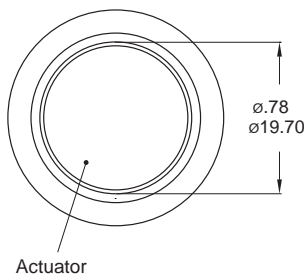
H High, No LED



Only available for aluminum body options.

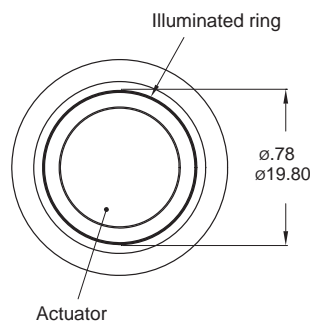
▼ LIGHT OPTIONS

0 Without LED

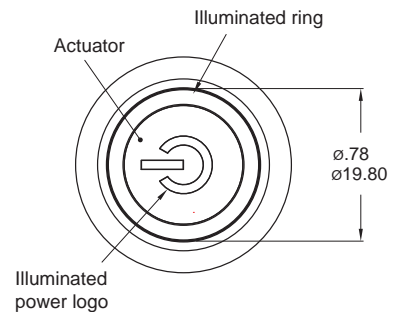


Available with button type H only.

E / E2 Ring (Moveable)



E1 / E3 Ring (Moveable)+Power logo

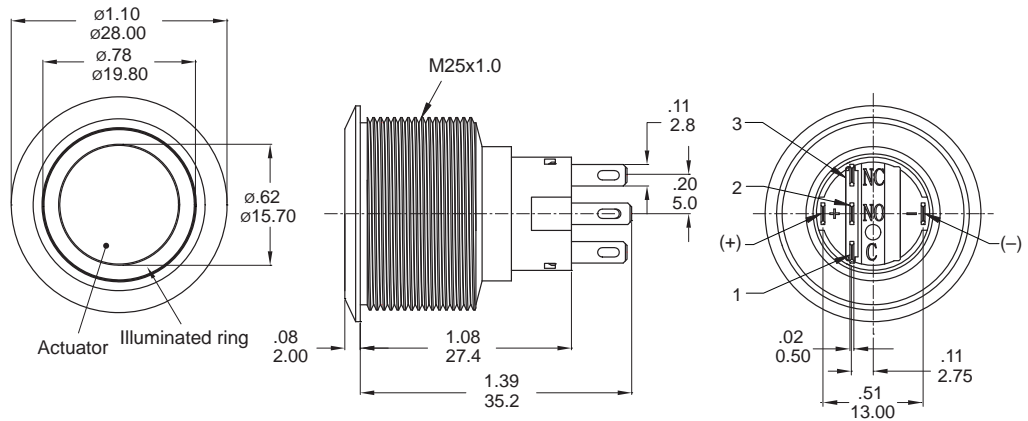


Available with body type D0 only.



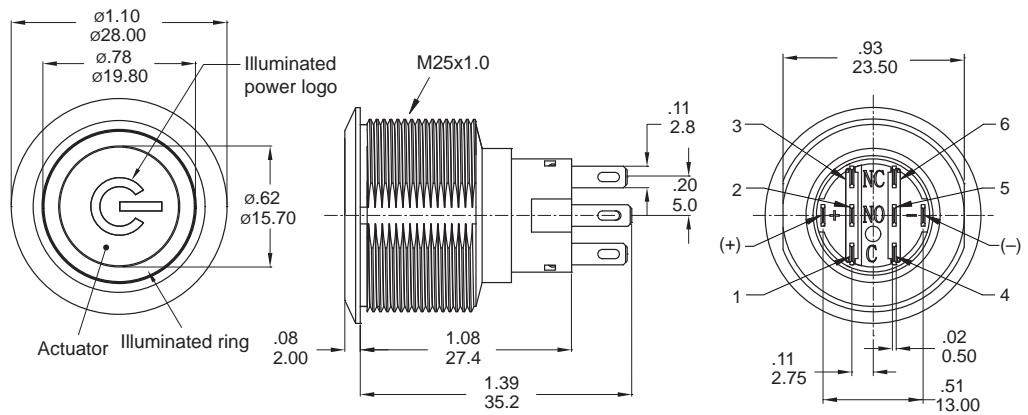
▼ DIMENSION

Flat button



Model name. KSD-MPB25-A0F10E-112-JQ

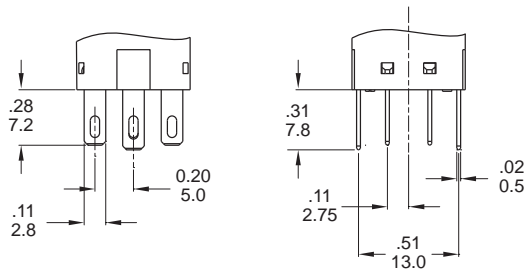
Flat button



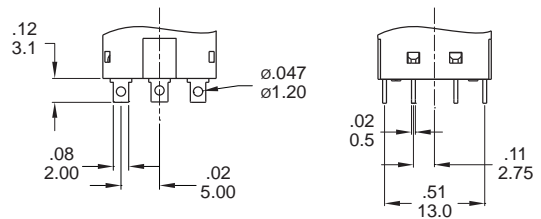
Model name. KSD-MPB25-D0F20E1-112-JQ

▼ TERMINAL OPTIONS

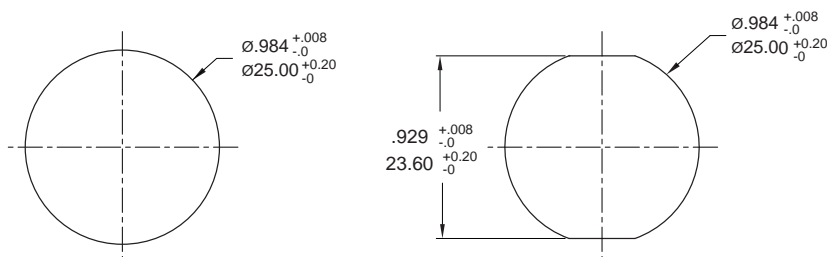
J Solder terminal (std)



S Short solder terminal



▼ PANEL MOUNTING



Panel thickness:
.394inch(10.0 mm) MAX.



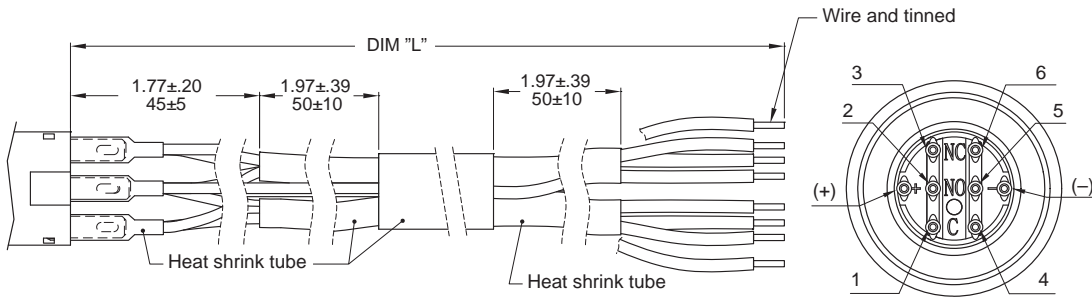
▼ WIRE OPTIONS

TX Wire leads UL3385 18 AWG (Flying lead Terminal)

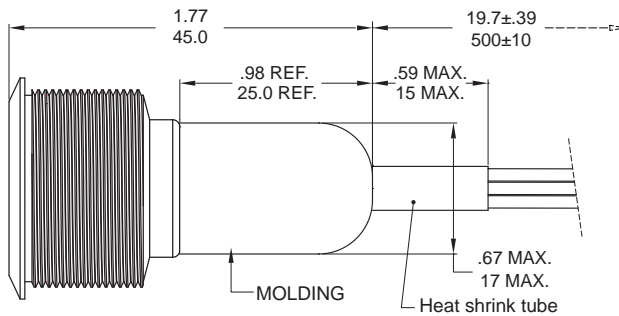
Wires

CODE	DIM "L"
T1	500
T2	1000
T3	1500
T4	2000

Units: mm



D1 Molding, 500mm wire leads UL3385 18 AWG



Wires:

- Yellow wire - Terminal 1 and 4
- Purple wire - Terminal 2 and 5
- Green wire - Terminal 3 and 6
- Red wire - LED (+) Positive
- Black wire - LED (-) Negative

* Please consult sales for additional wire options.

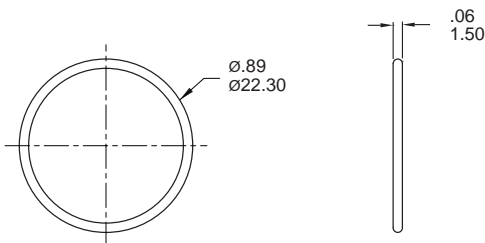
▼ HARDWARE

* Standard hardware : 1 nut, 1 O-ring

* For further information please consult sales representativity.

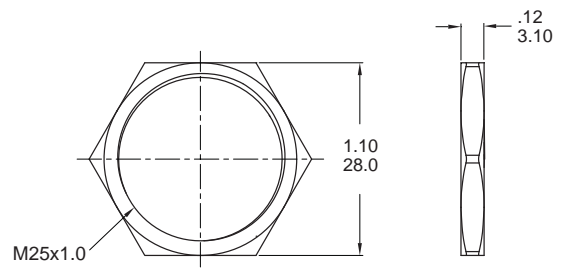
O-RING (Std.)

Model name. FCP-MPB25



NUT (Std.)

Model name. MNU-MPB03



▼ O-RING INSTALLATION

