



KSD

SWITCH CONNECTOR



SPECIFICATIONS

RATING: Max : 2A / 36VDC ; Min : 0.5A / 12VDC.

ELECTRICAL LIFE: 200,000 make-and-break cycles at full load

MECHANICAL LIFE: 1,000,000 cycles

INSULATION RESISTANCE: 1,000 MΩ min. at 500VDC

DIELECTRIC STRENGTH: 2,000V RMS @ sea level (initial value)

CONTACT RESISTANCE: 50 mΩ max.

OPERATION TEMPERATURE: -20°C~+70°C

TRAVEL: About 2.0±0.20mm

OPERATION PRESSURE: 4.5N±1.5N

INGRESS PROTECTION: IP67(In house test)

TORQUE: 11.5 kgf · cm

MATERIALS

BUSHING: Aluminum alloy / Stainless Steel

BASE: PBT (UL 94-V0)

ACTUATOR: PC (Translucent UL 94-V2)

CAP: Aluminum alloy / Stainless Steel

SPRING: Steel.

SEALING: Silicone (Translucent).

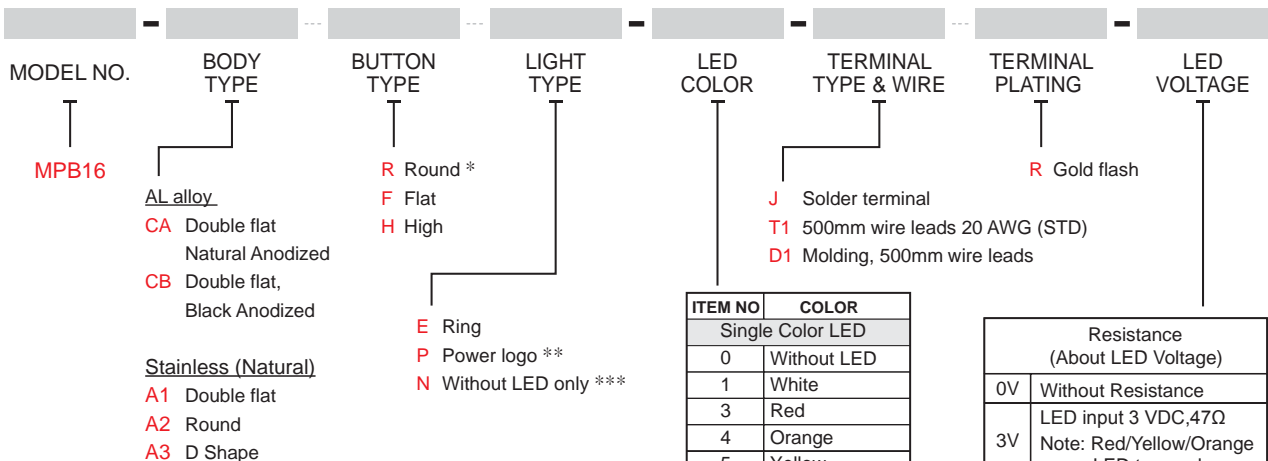
O-Ring: Silicone (Translucent).

TERMINAL: Brass, Gold flash plated.

CONTACT: Silver alloy.

HEX NUT: Brass (Nickel plated).

HOW TO ORDER



ITEM NO	COLOR
Single Color LED	
0	Without LED
1	White
3	Red
4	Orange
5	Yellow
6	Green
7	Blue
Dual Color LED	
A	Red+Green
RGB Color LED	
RGB	Red/Green/Blue

Resistance (About LED Voltage)	
0V	Without Resistance
3V	LED input 3 VDC, 47Ω Note: Red/Yellow/Orange LED type only
6V	LED input 6 VDC, 180Ω
12V	LED input 12 VDC, 470Ω
24V	LED input 24 VDC, 1000Ω

※ ohms value of resistance tolerance: ±5%

※ Current limiting resistor is required to limit LED forward current to 20mA.

- * For body type CA and CB only
- ** Not applicable for button type H
- *** For button type H only
- **** Except standard color, for other colors information please consult sales representativity.

EXAMPLE:

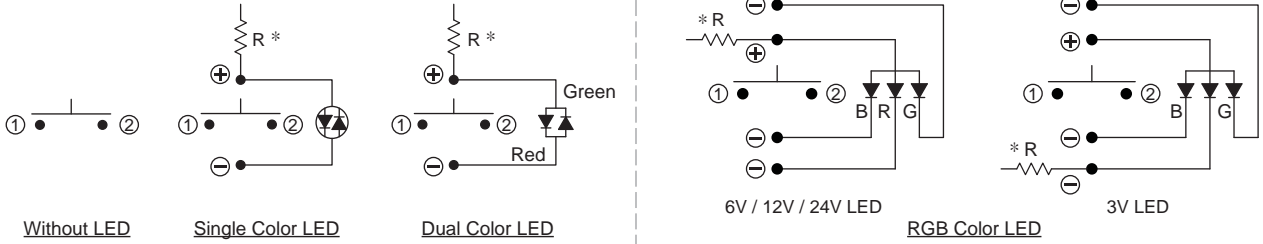
MPB16-CARE-0-JR-0 (Without LED)

MPB16-CARE-□-JR-□V





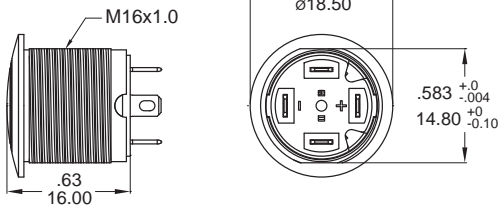
▼ CIRCUIT



* Note: According to the input voltage adjustment resistance.

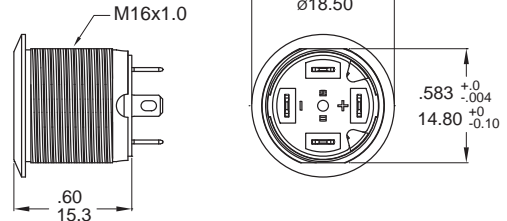
▼ BODY OPTIONS

CA / CB Double flat

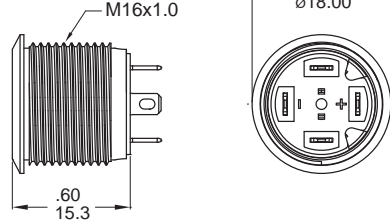


Available with round button only

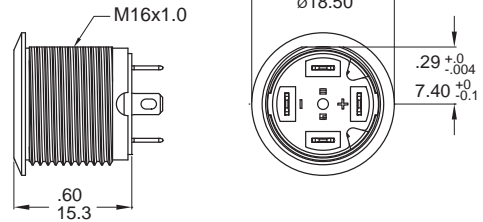
A1 Double flat



A2 Round

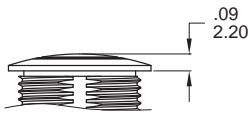


A3 D Shape



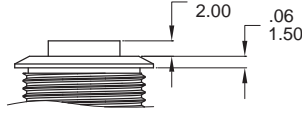
▼ BUTTON OPTIONS

R Round



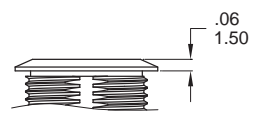
Available with body type CA and CB only

H High *



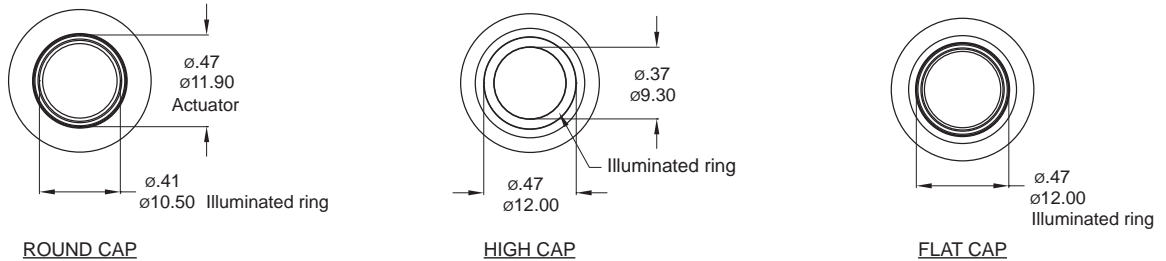
* Note: Available with body type A1~A3 only

F Flat *

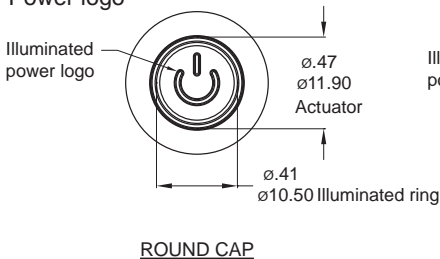


▼ LIGHT OPTIONS

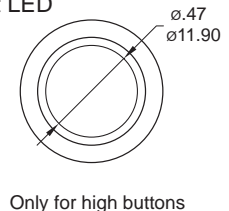
E Ring



P Power logo



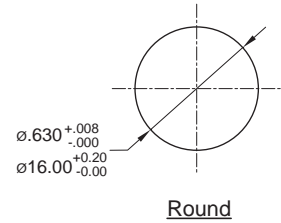
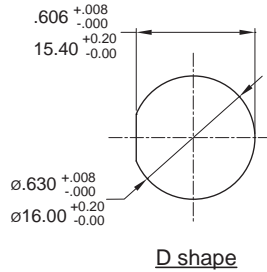
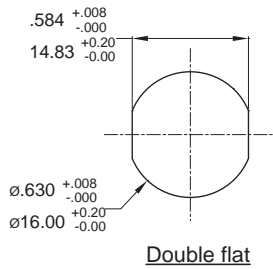
N Without LED



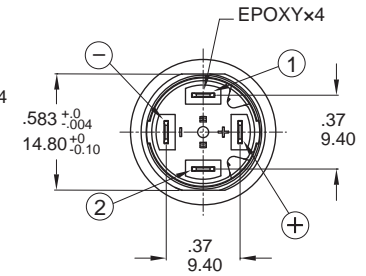
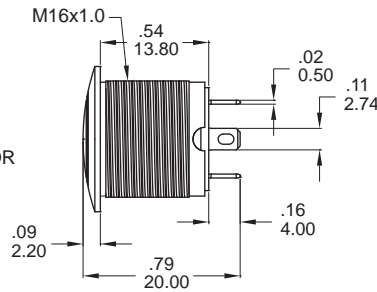
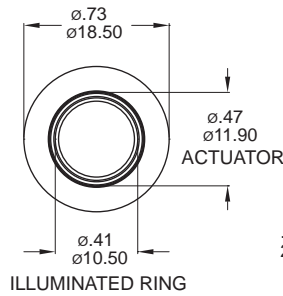


▼ PANEL MOUNTING

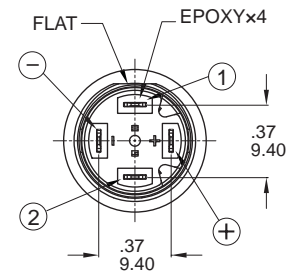
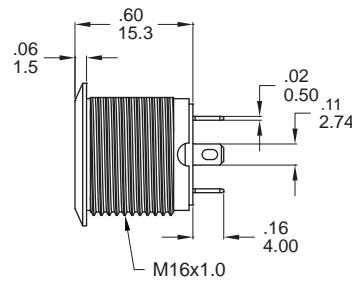
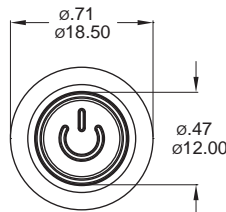
Panel thickness:
8.0 mm (.031inch) MAX.



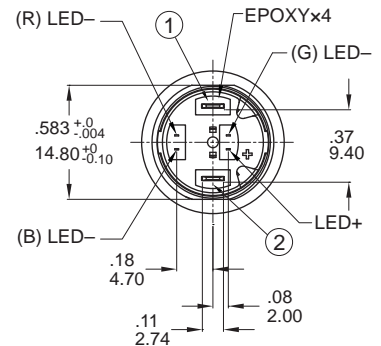
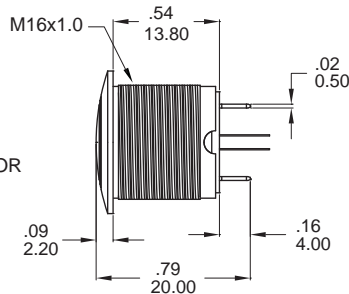
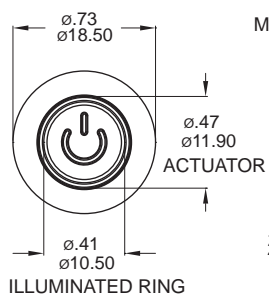
▼ DIMENSION



Model name. KSD-MPB16-CARE-1-JR-0V



Model name. KSD-MPB16-A3FP-1-JR-0V



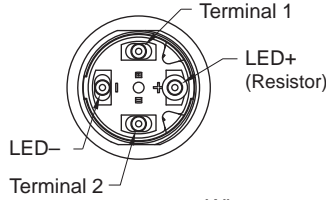
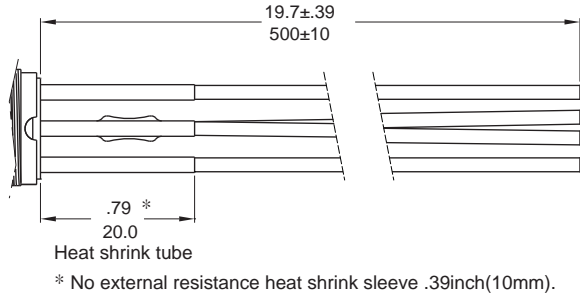
Model name. KSD-MPB16-CARP-RGB-JR-0V



▼ WIRE OPTIONS

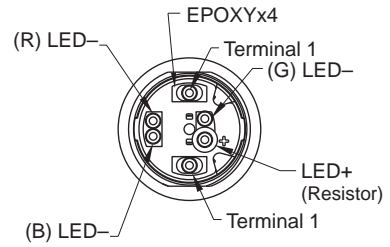
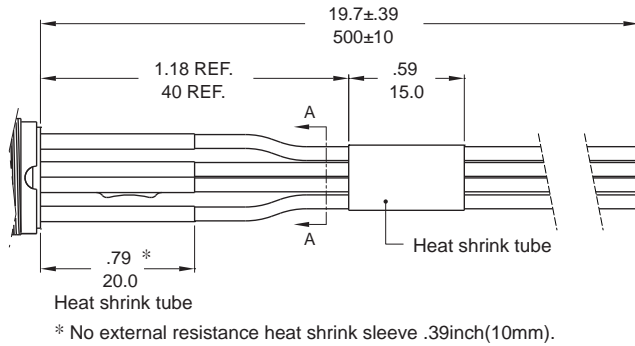
* Please consult sales for additional wire options.

T1 500mm wire leads 20 AWG



Wires:
 Black wire - Terminal
 Red wire - LED (+) Positive
 Green wire - LED (-) Negative
 * No Illumination: Black Wire - Terminal

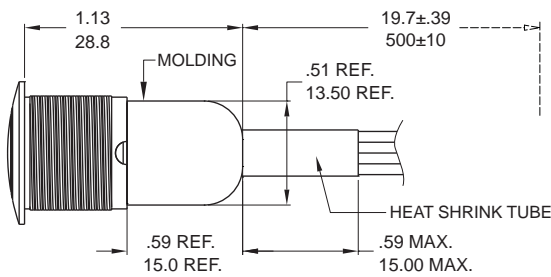
T1 500mm wire leads 20 AWG (RGB LED)



SECTION A-A

Wires:
 Black wire - Terminal
 White wire - LED (+) Positive
 Red wire - (R)LED (-) Negative
 Blue wire - (G)LED (-) Negative
 Green wire - (B)LED (-) Negative

D1 Molding, 500mm wire leads



Wires: 20 AWG
 Black wire - Terminal
 Red wire - LED (+) Positive
 Green wire - LED (-) Negative
 * No Illumination: Black Wire - Terminal

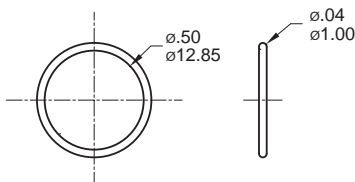
RGB LED Wires: 22 AWG
 Black wire - Terminal
 White wire - LED (+) Positive
 Red wire - (R)LED (-) Negative
 Blue wire - (G)LED (-) Negative
 Green wire - (B)LED (-) Negative

▼ HARDWARE

* Standard hardware : 1 nut, 1 O-ring
 * For further information please consult sales representativity.

O-RING (Std.)

Model name. FCP-MP602



NUT (Std.)

Model name. MNU-PY01

