



KSD-R9(R19) Series

Rocker Switches



KSD-R9 (R19)
Rocker Switches

KSD

SWITCH CONNECTOR



SPECIFICATIONS

Electrical rating : 12A 125VAC 6A 250VAC (UL)
4(1)A 250VAC (VDE)
16A 250VAC/21A 125VAC (UL)
16(6)A 250VAC (VDE) R91, R9D

Mechanical life: Over 30000 cycles

Electrical life: Over 10000 cycles

Contact resistance: < 20mΩ

Insulation resistance: > 1000MΩ

High voltage resistance: > 1500VAC 1 min.

Ambient temperature: Terminal side -20°C to 85°C
Actuating side -20°C to 55°C

Atmospheric humidity: Max.85%

Actuating force: 4 to 8N (depends on different switch function)

Flammability: UL94V-2

Storage temperature: -30°C to 80°C Max

Temperature rise at the terminal: Max 30°C (UL1054)

Solder ability of terminal: Max 350°C 3s

MATERIALS

Housing: PA 66

Rocker: PC & PA66

Contacts: Silver alloy

Terminal: Brass silver platrd

Lamp: Neon lamp, Tungsten lamp, LED

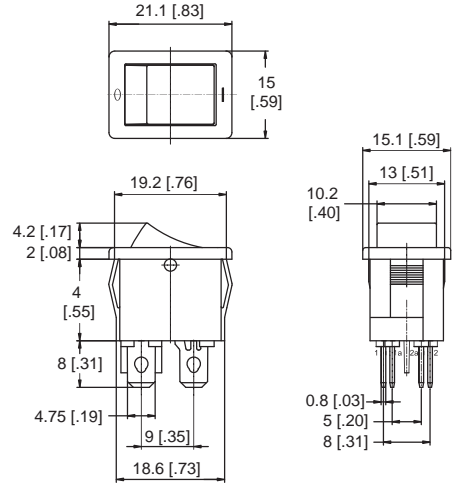
Movable arm: Beryllium copper

HOW TO ORDER

MODEL NO.	SWITCH FUNCTION	RATING	HOUSING COLOR	ACTUATOR COLOR	ACTUATOR MARKING	TERMINAL TYPE	LAMP VOLTAGE	LAMP TYPE	SAFETY APPROVAL	BARRIER
R9	2 8	6A 250V AC 12A 125V AC 4(1)A 250V AC 16A 250V AC 21A 125V AC 16(6)A 250V AC (Without lamp)	G Gray W White K Black O Orange R Red B Blue Y Yellow(III.) M Green(III.) F Blue(III.) D Red(III.)		See option of page 231	R R Type T T Type L L Type	0 No lamp 1 125V AC 2 250V AC	0 No lamp N Transparent Neon lamp F Green fluorescent Neon lamp B Blue fluorescent Neon lamp	F 4 Safety approvals E None approvals	2 No barrier between terminals 1 With one barrier between terminals 10 With cross barrier between terminals
1	ON-OFF (SPST)									
2	ON-OFF (SPST With lamp)									
3	ON-OFF (DPST)									
4	ON-OFF (DPST With lamp)									

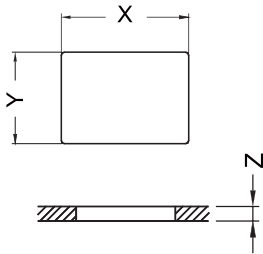
▼ OPTIONS OF SWITCH FUNCTION & DIMENSION

Item Number	Poles & Throws	Rocker Position		
R91	SPST	ON	NONE	OFF
R99	SPST (WITH LAMP)	ON	NONE	OFF
R9D	DPST	ON	NONE	OFF
R9Y	DPST (WITH LAMP)	ON	NONE	OFF
R9I	Indicator			
R9B	The block sealed on the panel			



KSD-R9(R19)
Rocker Switches

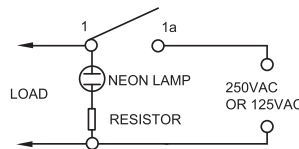
▼ PANEL CUT OUT



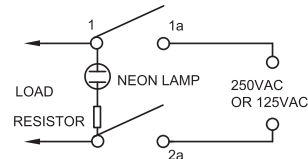
Z	Y	X
0.7~1.25	12.8~12.9	19.2~19.3
1.25~2.0	12.8~12.9	19.3~19.4
2.0~3.0	12.8~12.9	19.5~19.6

▼ CIRCUITS FOR SWITCH WITH LAMP

For circuit of 250VAC, 125VAC with neon lamp



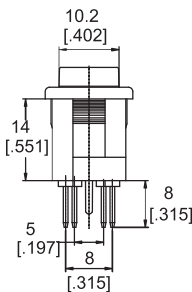
CIRCUIT FOR R99



CIRCUIT FOR R9Y

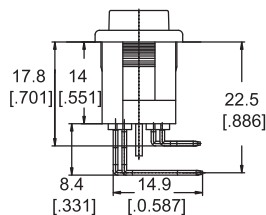
▼ TERMINAL TYPE

T Type



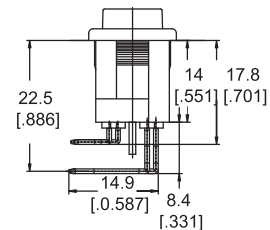
Quick Connect Tab

R Type



Right angle PC though hole terminal

L Type



Left Angie PC Through Hole Terminal

▼ FOR ROCKER SWITCHES

A	B	C	D	E	F	G	H	I
J	K	L	M	N	O	P	Q	S
T	U	V	W	X	Y	Z	1A	1B
1C	1D	1E	1F	1G	1H	1I	1J	1K
1L	1M	1N	1O	1P	1Q	1R	1S	1T
1U	1V	1W	1Y	1Z	2A	2B	2C	2D
2E	2F	2G	2H	2I	2J	2K		