



SPECIFICATIONS

Rating: 1A 30V DC

Contact Resistance: 30mΩ

Insulation Resistance: 100V DC 1Min. 100mΩ

Withstand Voltage: AC 500V 1Min. 0.5mA 1 Min.

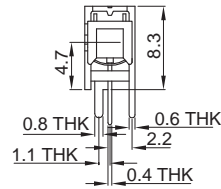
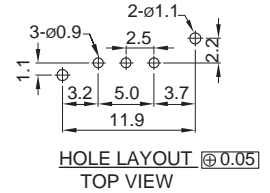
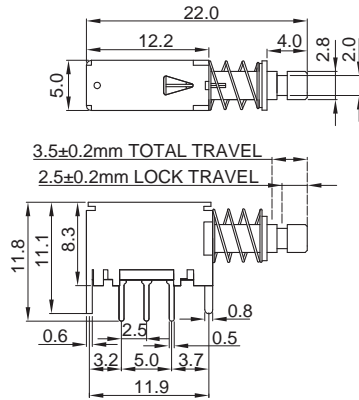
Operating Force: 160gf±100gf

Life Test: 10,000 Cycle 15~18 Cycle/min

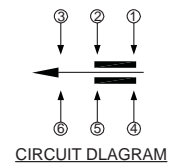
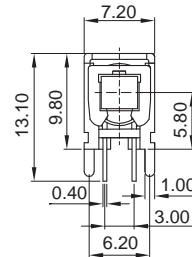
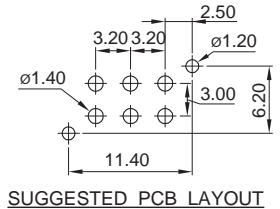
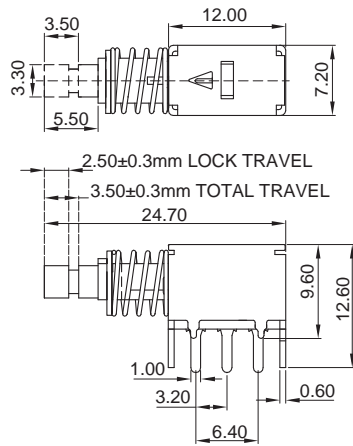
▼ DIMENSION



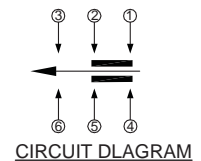
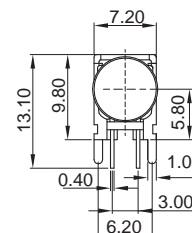
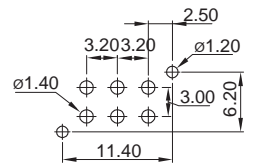
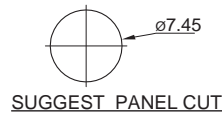
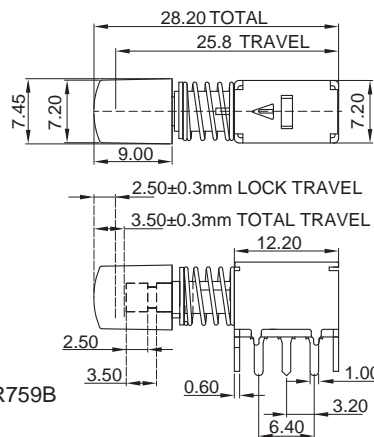
Model name. KSD-WPM-1PLB



Model name. KSD-WPM-2PLBY

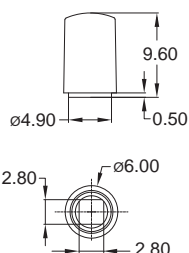


Model name. KSD-WPM-2PLBY-R759B

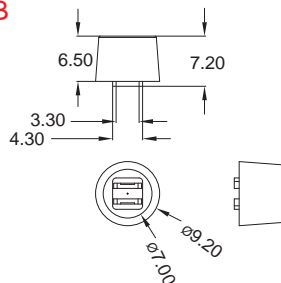


▼ CAP OPTIONS

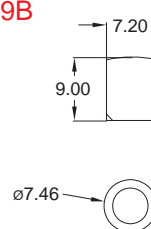
R69B



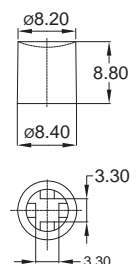
R837B

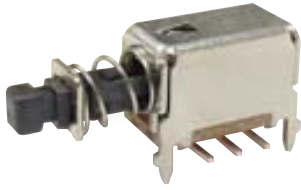


R759B



R88B





SPECIFICATIONS

LIFE TEST: Without loading 10000 cycles at a speed of 15-18cycles

CONTACT RESISTANCE: 30mΩ max.

INSULATION RESISTANCE: 100MΩ min.

DIELECTRIC STRENGTH: 500V AC for 1 min.

OPERATING TEMPERATURE: -16°C~+60°C

RATING: DC 1.0A 12V

FUNCTION: 2P2T

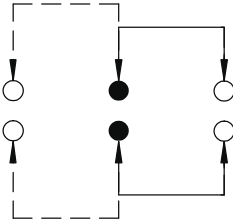
TIMING: NON-SHORTING

OPERATING FORCE: 250gf±100gf

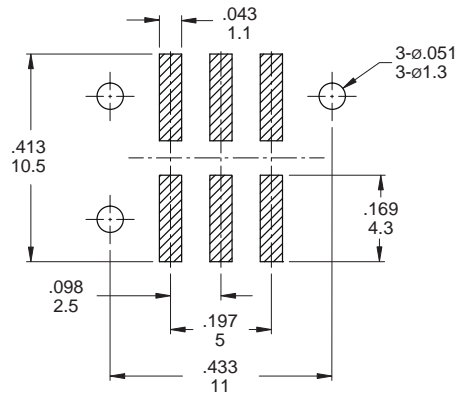
LOCK TRAVEL: 2.5±0.2

TOTAL TRAVEL: 3.5±0.25

▼ SCHEMATIC & P.C.B LAYOUT

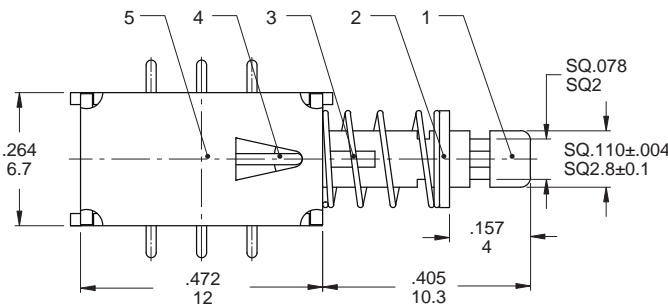


SCHEMATIC
(NON-SHORTING)

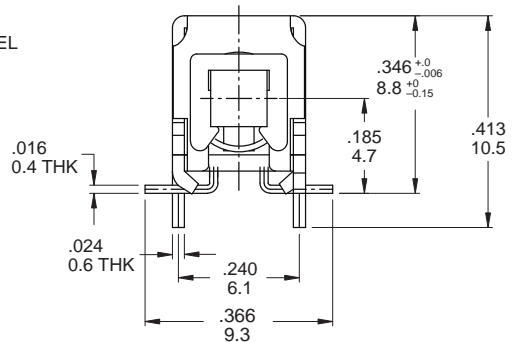
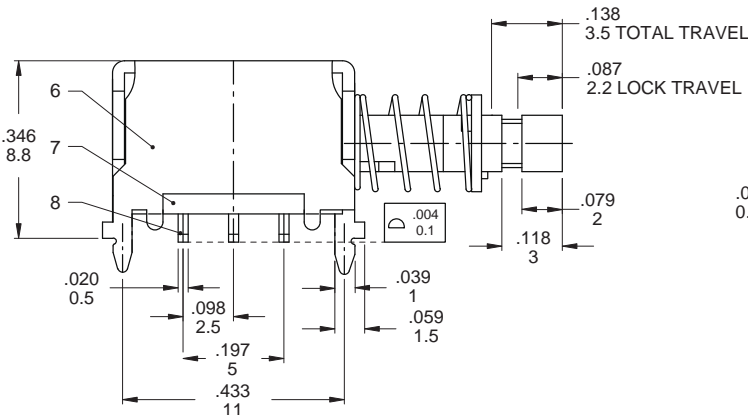


P.C.B LAYOUT
TOP VIEW

▼ DIMENSION



9	CONTACT CLIP	PBS C5210R-EH	2	Ag PLATED
8	TERMINAL	BRASS STRIP	6	Ag PLATED
7	BASE	PHENOLIC RESIN	1	
6	FRAME	STEEL STRIP	1	Ni PLATED
5	SPRING PLATE	PBS STRIP	1	NATURAL
4	CAM STICK	BRASS WIRE	1	Ni PLATED
3	SPRING	STEEL WIRE	1	Ni PLATED
2	BLOCK	STEEL STRIP	1	Ni PLATED
1	KNOB	LCP	1	BLACK
NO.	PARTS	MATERIALS	Q'TY	FINISHING



Model name. KSD-PS22E08000