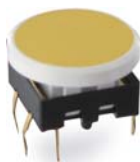




KSD

SWITCH CONNECTOR



General Specifications

- Circuit:** SPST
- Current Rating:** 50mA @ 12VDC
- Contact Resistance:** 100mOhm Max.(initial)
- Insulation Resistance:** 100MOhm Min.
- Operating Force :** 300gf ± 100gf
- Total Travel:** 0.3mm ± 0.1mm
- Operating Life:** 5,000,000 cycles Min.
- Operating Temperature:** -25 deg.~+60 deg.
- Solder Specifications:** 260 deg. for 3 seconds

Materials

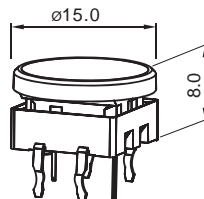
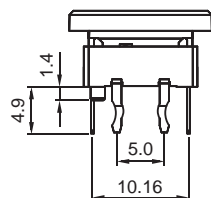
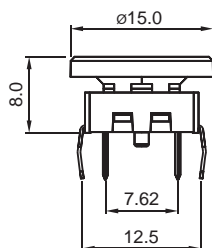
- Cover:** Polycarbonate (PC)
- Cap:** Polycarbonate (PC) or Acrylonitrile Butadiene Styrene(ABS)
- Reflector:** Polycarbonate (PC)
- Base:** Polyamide (PA)
- Lamp Term. :** Phosphor bronze (PBS) with gold plating
- Act. Dome:** SUS with silver plating
- End Term. :** Brass with gold plating

HOW TO ORDER

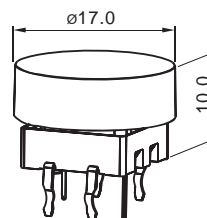
MODEL NO.	CAP COLOR	LED COLORS	COVER STYLE
SPL15	<ul style="list-style-type: none"> 1 Red 2 Yellow 3 Green 4 White 7 Blue 	<ul style="list-style-type: none"> 01 Red S2S Super Yellow 03 Green P3S Pure Green(single) 4S White (single) 7S Blue (single) 	<ul style="list-style-type: none"> -- Without Cover VAT Flat CVT Concave

EXAMPLE: KSD-SPL15-1-01-VAT

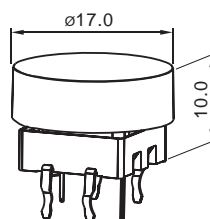
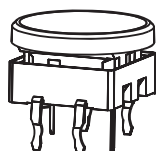
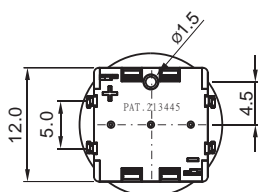
▼ DIMENSION



Standard switch unit



Switch with VAT cover



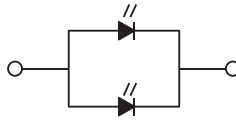
Switch with CVT cover



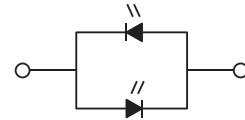
▼ CONTACT CONFIGURATION



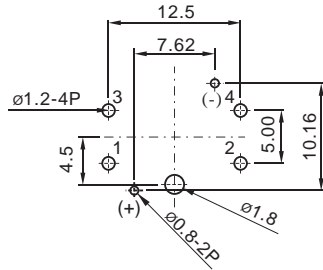
Single chip LED



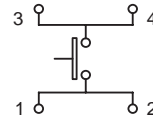
Single Color / 2chips LED



Dual Colors LED



P.C.B. Mounting Holes



(SPST)
Contact Configuration

▼ LED CHARACTERISTICS

The electrical specifications shown are determined at a basic temperature of 25 C. If the source voltage exceeds the rated voltage of LED, a ballast resistor must be connected in series with the LED.

Single color	Forward Voltage V_F (V) at 20mA	Forward Current I_F (mA)	Reverse Voltage V_R (V)	Reverse Current I_R (uA) at $V_R=5V$
bi-Red	1.8~2.6	Typical 20mA 30mA max.	5V	100uA max.
Super Yellow	2.0~2.5			
Green	2.2~2.6			
Super Green	2.0~2.6			
Pure Green	3.2~3.6			
Blue	3.5~4.0			
White	3.2~3.8			
Bi color LED		Typical 20mA 30mA max.	5V	100uA max.
Red & Blue	Red 1.8~2.6 Blue 3.5~4.0			
Red & Pure Green	Red 1.8~2.6 Pure Green 3.2~3.6			
Pure Green & Blue	Pure Green 3.2~3.6 Blue 3.5~4.0			



Attention: LED are electrostatic sensitive devices

