



# KSD-KLS Illuminated SPDT/DPDT Pushbutton



Pushbutton



## Features/Benefits

- Positive tactile feedback
- Momentary or Lock version
- SPDT & DPDT configuration
- Gold or silver contact materials
- Choices of color on LED illumination
- 3 different CAP styles & sizes
- CAP with printed or etched logo\*

## Typical Applications

- Audio/video system
- Vending machine
- Kiosks
- Network equipment

**NEW**

## Specifications

FUNCTION: SPDT, DPDT  
CONTACT ARRANGEMENT: N.C.  
MOUNTING TYPE: Straight PCB terminals

## Mechanical

OPERATING LIFE: 1,000,000 cycles  
TOTAL TRAVEL: 2.2 mm  
OPERATING FORCE: 200 ± 100 gf (SPDT)  
300 ± 150 gf (DPDT)

## Electrical

CONTACT RATING; See table on contact material  
OPERATING LIFE: 200,000 cycles on both gold & silver plating  
DIELECTRIC STRENGTH: 1,000 V AC for 1 min.  
INSULATION RESISTANCE: 100 MΩ min. @ 500 VDC  
INITIAL CONTACT RESISTANCE: 50 mΩ max. (silver contact)  
100 mΩ max/ (gold contact)

## Materials

CASE: PA66+70G33L (Black)  
ACTUATOR: POM (White)  
CAP: PC  
SPRING: Black wire / Stainless steel  
SPRING PLATE: Phosphor bronze  
TERMINALS / CONTACT: Brass / Copper with silver or gold plated  
TERMINAL SEAL: Epoxy

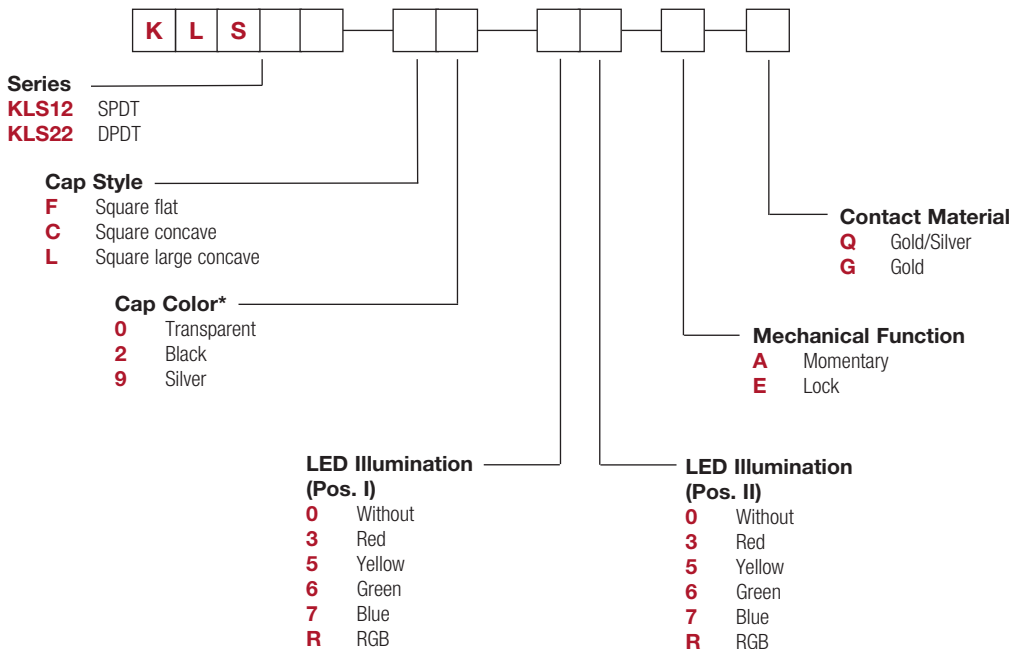
## Operating Environment

OPERATING TEMPERATURE: -40°C to +85°C

**Note:** Specifications and materials listed above are for switches with standard options. For information on specific and custom switches, consult Customer Service Center.

## Build-A-Switch

To order, simply select desired option from each category and place it in the appropriate box.



\* For CAP with logo or symbol, please contact your sales representative.

Dimensions are shown: mm  
Specifications and dimensions subject to change



A

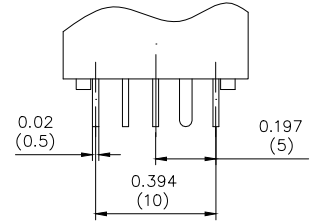
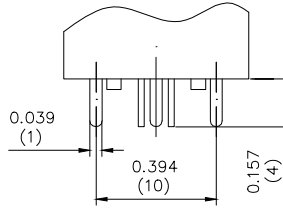
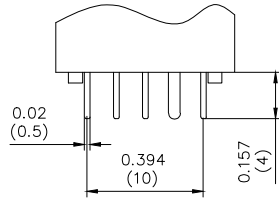
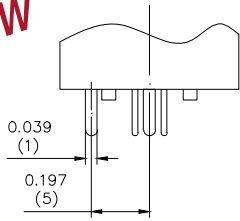
Pushbutton

## SERIES

**NEW**

**KLS12**

**KLS22**

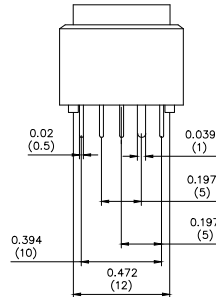
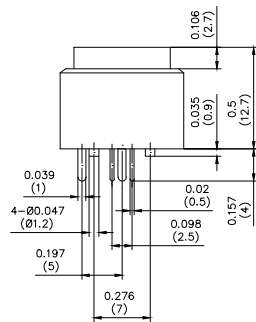
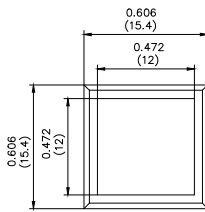


NO. POLES	MODEL NO.	SWITCH FUNCTION		CONNECTED TERMINALS		SCHEMATIC
		POS. 1	POS. 2	POS. 1	POS. 2	
SP	KLS12	ON	(ON)	1-3	1-2	
DP	KLS22	ON	(ON)	1-3,4-6	1-2,4-5	

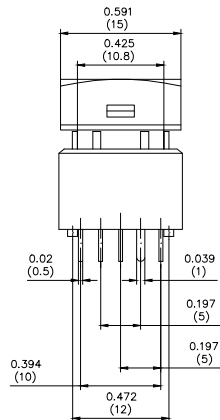
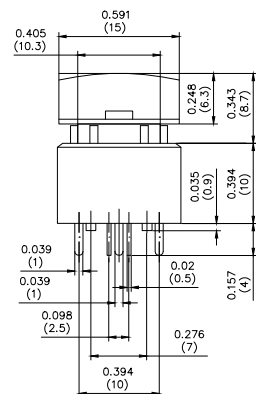
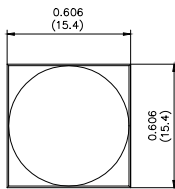
( )=Momentary

## CAP

**F** SQUARE FLAT



**C** SQUARE CONCAVE



Dimensions are shown: mm  
Specifications and dimensions subject to change



# KSD-KLS Illuminated SPDT/DPDT Pushbutton **NEW**

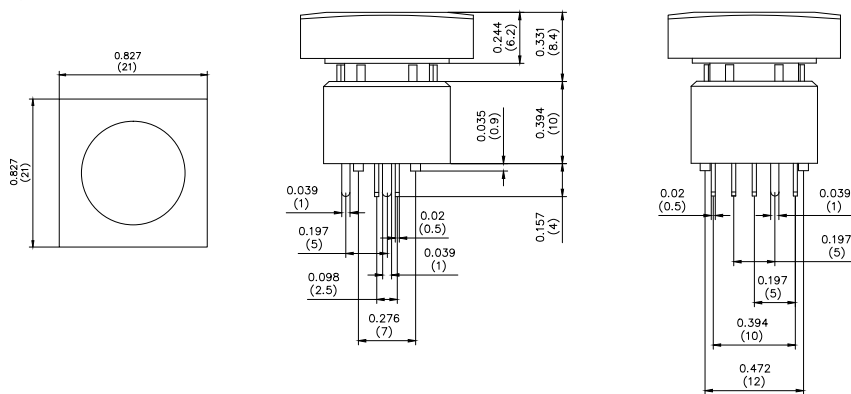


Pushbutton

A

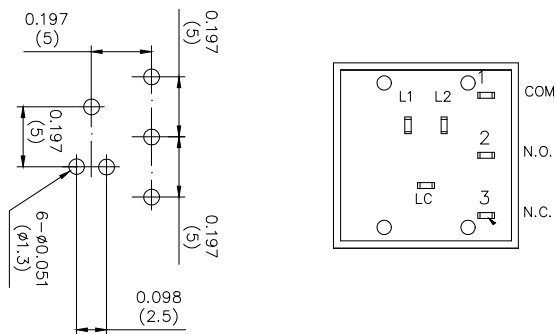
## CAP

**L** SQUARE LARGE CONCAVE

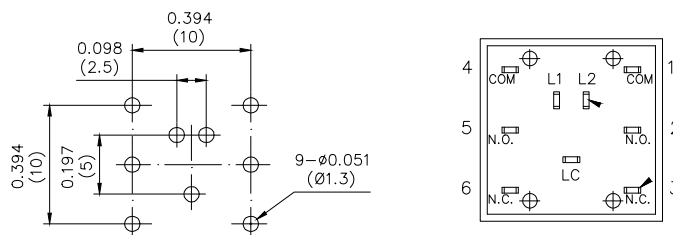


## TERMINATION - PCB LAYOUT

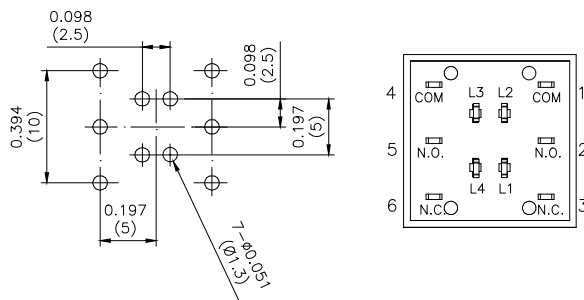
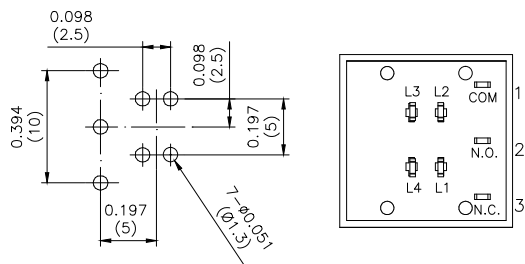
### KLS12



### KLS22



## DUAL COLOUR



## RGB

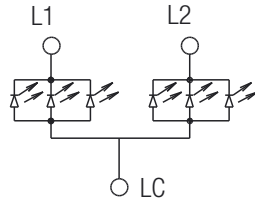


First Angle  
Projection

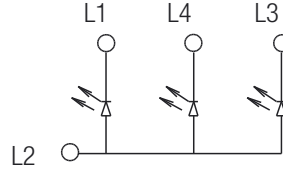
Dimensions are shown: Inches (mm)  
Specifications and dimensions subject to change

**LED CIRCUIT**

**NEW**



**DUAL COLOUR**



**RGB**

**CONTACT MATERIAL**

OPTION CODE	CONTACT MATERIAL	TERMINAL PLATING	RATING
<b>Q</b>	Copper / Gold <sup>1</sup> Brass / Silver <sup>2</sup>	Silver	25VDC 500 mA
<b>G</b>	Copper, Gold	Copper, Gold	28 VDC 100 mA

<sup>1</sup> Movable contact  
<sup>2</sup> Stationary contact



Dimensions are shown: Inches (mm)  
Specifications and dimensions subject to change