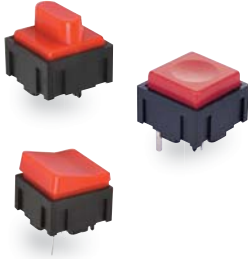




KSD

SWITCH CONNECTOR



SPECIFICATIONS

RATING: 25mA @ 50VDC

ELECTRICAL LIFE: 10,000 cycles typical.

CONTACT RESISTANCE: 20 mΩ max. typical at 2-4VDC, 100mA

INSULATION RESISTANCE: 100 MΩ min.

DIELECTRIC STRENGTH: 500 V rms at sea level.

OPERATING FORCE: 250 ± 50gf

MATERIALS

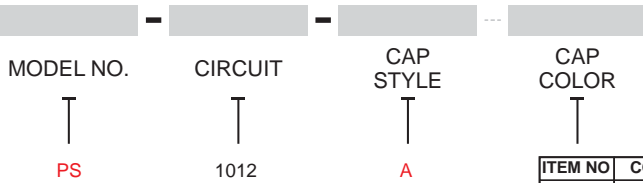
HOUSING: Nylon 6/6.

COVER / CAP: ABS or polycarbonate.

DOME CONTACT: Gold over stainless steel.

TERMINALS / CONTACTS: Silver plated copper alloy.

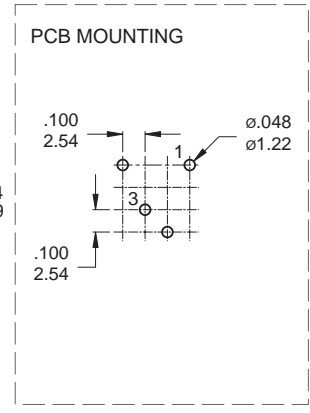
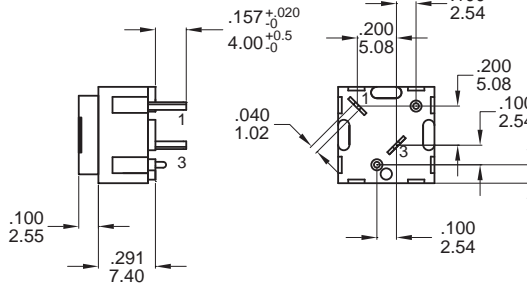
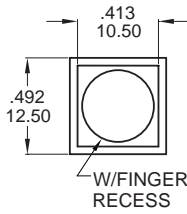
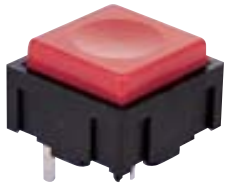
HOW TO ORDER



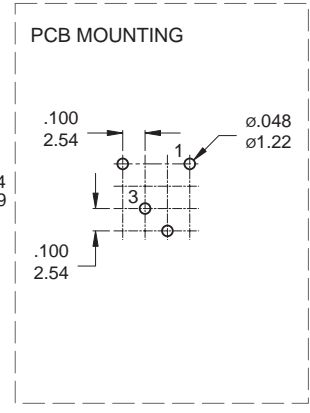
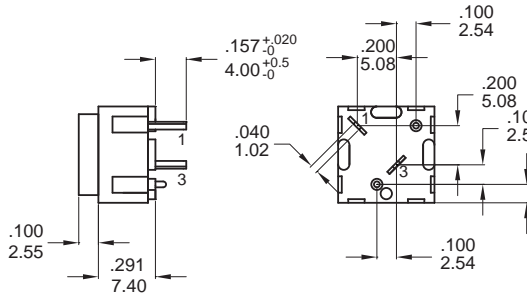
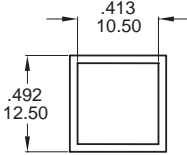
ITEM NO	COLOR
1	White
2	Black (Std)
3	Red (Std)
4	Orange
5	Yellow
6	Green
7	Blue
9	Gray

Note: Except standard color, for other colors information please consult sales representativity.

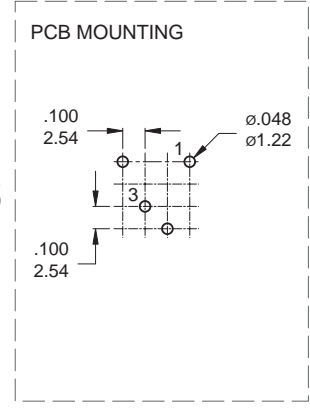
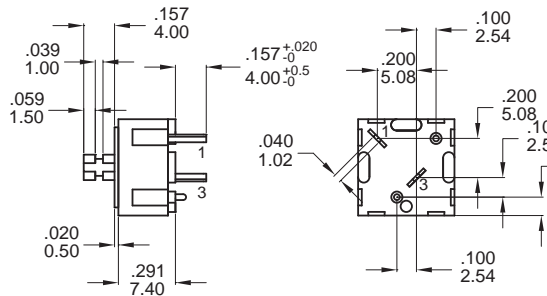
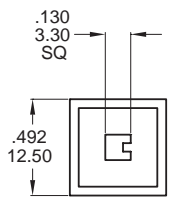
EXAMPLE: KSD-PS-1021-A Cap color



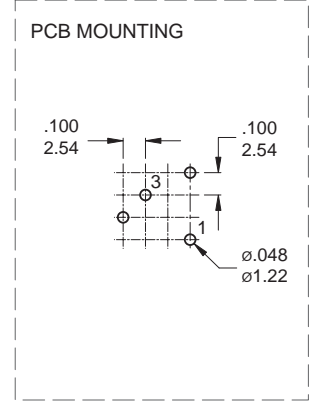
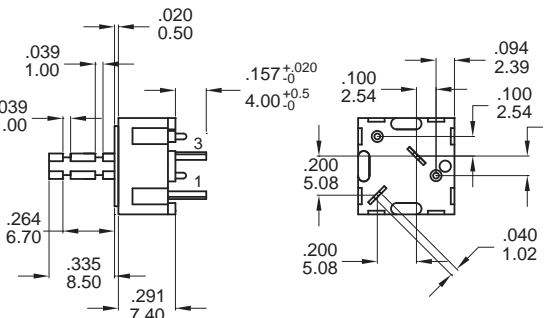
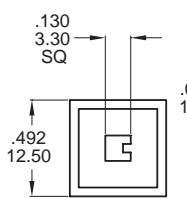
Model name. KSD-PS-1012-A3



Model name. KSD-PS-1012-B2



Model name. KSD-PS-1012-C2



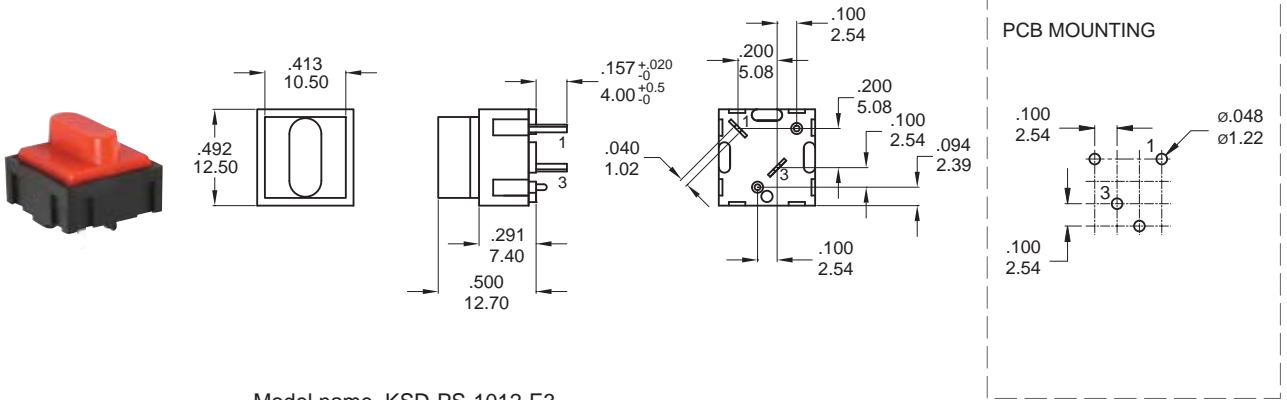
Model name. KSD-PS-1012-D2



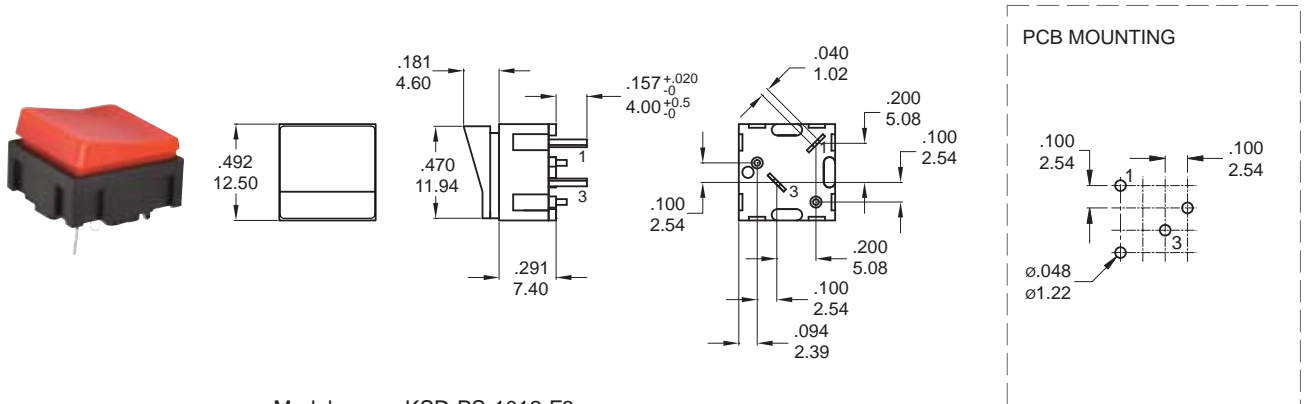
KSD-PS Series

Pushbutton Switches

KSD-PS
Pushbutton Switches



Model name. KSD-PS-1012-E3



Model name. KSD-PS-1012-F3

▼ CAP OPTIONS

Model No.	PS001	PS002	PS003	PS004	PS005	PS006
COLORS	Black White Gray	Black / White Gray / Red Chrome	Black / Gray White / Red	Black / Gray	Black / White Gray / Red Chrome / Blue	Black / Gray White / Red

Model No.	FCP-1012-1X	FCP-1012-2X	FCP-1012-3X
COLORS	3=RED 7=BLUE 5=YELLOW	3=RED 9=GRAY	3=RED 7=BLUE 5=YELLOW

Note: 1. Only available for C and D cap style.
2. X=Cap color