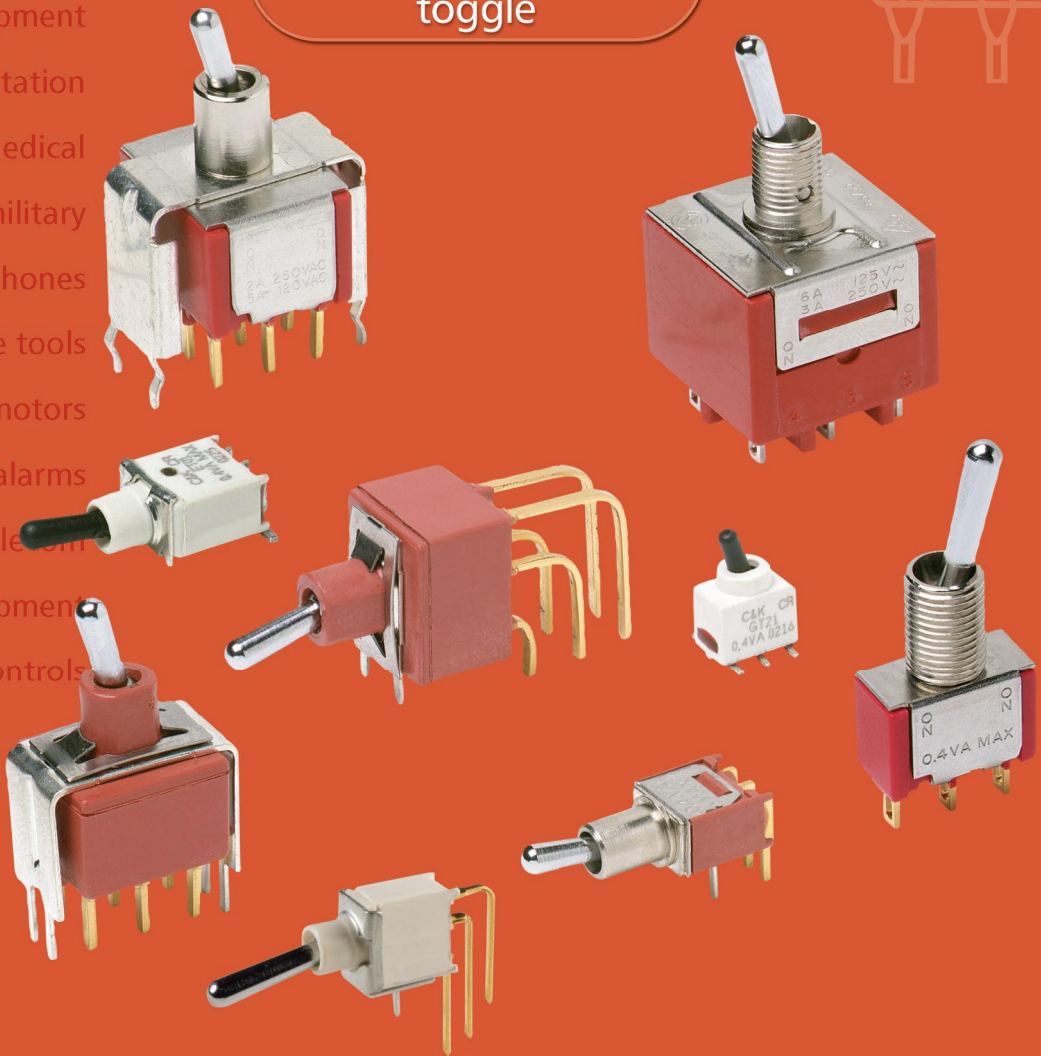


audio
automotive
aerospace
communication devices
consumer appliances
consumer electronics
datacom
data storage
handheld devices
industrial
industrial equipment
instrumentation
medical
military
mobile phones
portable tools
pumps & motors
security alarms
telecom
test equipment
thermostatic controls

KSD

SWITCH CONNECTOR



toggle

KSD

SWITCH CONNECTOR

Features/Benefits

- **LED built in to toggle handle.** Save panel space instead of having an separate indicator light.
- **6 LED color options to choose from.** Easily determine if the switch is ON or Off from any distance.
- **Electrical ratings up to 20 Amps.** Suitable for high amp, industrial applications.
- **6.3 quick connect Terminals.** Easy installation. No soldering required.

Typical Applications

- **Telecommunications**
- **Instrumentation**
- **Medical equipment**

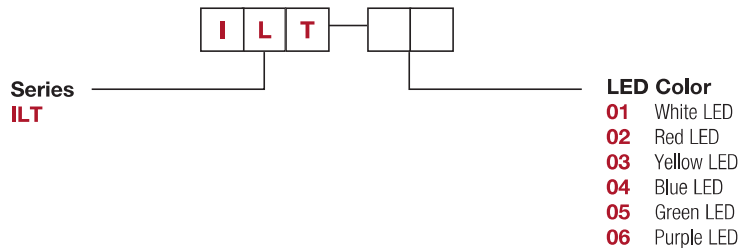


Specifications

RATINGS: 20A 12 VDC
 CONTACT RESISTANCE: 50 mΩ max.
 INSULATION RESISTANCE: 500V DC 1000MΩ min.
 DIELECTRIC STRENGTH: 1 Minute 1500V AC
 OPERATING TEMPERATURE: -25°C to +85°C
 ELECTRICAL LIFE: 10,000 cycles

Build-A-Switch

To order, simply select desired option from each category and place in the appropriate box. For additional options not shown in catalog, consult Customer Service Center.



F

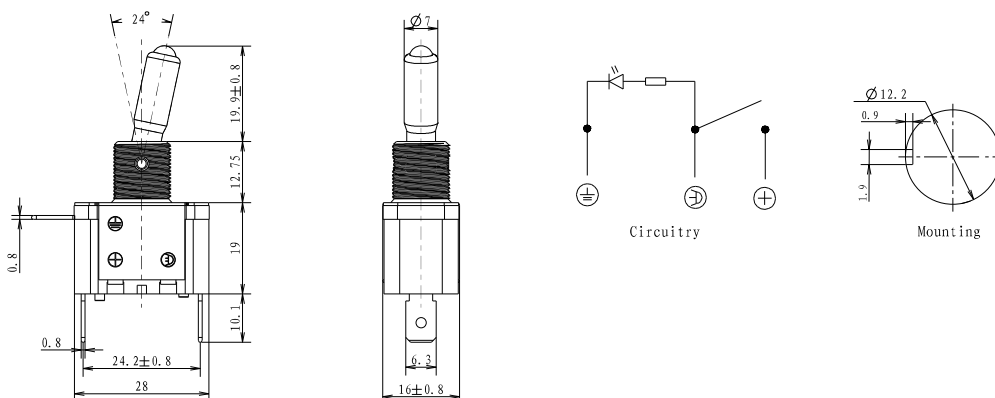
Toggle

KSD-ILT Series Illuminated Toggle Switch



SWITCH FUNCTION

UL** MODEL NO.	SWITCH FUNCTION	
	POS. 1	POS. 2
	KEYWAY	KEYWAY
ILT01	ON	OFF
ILT02	ON	OFF
ILT03	ON	OFF
ILT04	ON	OFF
ILT05	ON	OFF
ILT06	ON	OFF



Selection Guide

Dice	Lens Type	Luminous intensity(mcd) @ 20mA			Viewing Angle
		Min.	Typ	Max.	
White	Water Clear	10000	--	12000	20 1/2
Red	Red Diffused	200	--	500	30
Yellow	Yellow Diffused	200	--	500	20
Blue	Water Clear	3000	--	5000	20
Green	Green Diffused	8000	--	10000	30
Purple	Water Clear	3000	--	5000	20

Note:
1. 1/2 is the angle from optical centerline where the luminous intensity is 1/2 the optical centerline value.
2. the above luminous intensity measurement allowance tolerance $\pm 15\%$

Electrical / Optical Characteristics at Ta=25° C

Parameter	Units	White	Red	Yellow	Blue	Green	Purple
		Forward Voltage (VF)	V	2.8-3.6	2.0 Typ	2.0 Typ	2.8-3.6
Reverse Current (IR)	μ A	10 Max.	10 Max.	10 Max.	10 Max.	10 Max.	10 Max.
Dominate Wavelength(λ_d)	nm	460-465	620-625	585-590	460-465	520-525	460-465

Absolute Maximum Ratings at Ta=25° C

Parameter	Units	White	Red	Yellow	Blue	Green	Purple
		Power Dissipation (Pd)	mW	90	60	60	90
DC Forward Current (IF)	mA	20	20	20	20	20	20
Peak Forward Current [I] (IFP)	mA	60	60	60	60	60	60
Reverse Voltage (VR)	V	5	5	5	5	5	5
Electrostatic Discharge (HBM) (ESD)	V	2000	2000	2000	2000	2000	2000
Operating Temperature (Topr)	° C	-10°+80					
Storage Temperature (Tstg)	° C	-40°+100					

Note:
1. 1/10 Dut cycle, 0.1ms pulse width.
2. The above forward voltage measurement allowance tolerance $\pm 0.1V$.



F

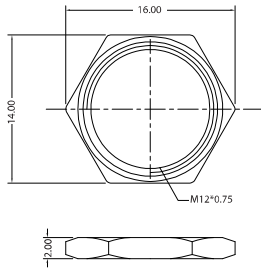
Toggle



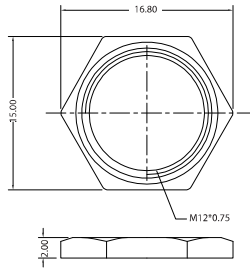
Dimensions are shown: Inches (mm)
Specifications and dimensions subject to change

www.bodongkaiguan.net

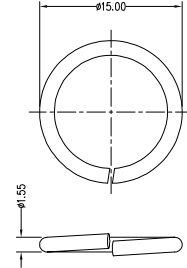
MOUNTING HARDWARE



PART NO.
G01101325 14MM HEX NUT



PART NO.
G01101326 15MM HEX NUT



PART NO.
G01101327 15MM WASHER



F

Toggle

Toggle Switch Product Selection Guide

Toggles									
Series	7000	Military	E	ET	T	GT	9000	PT	ILT
Switch Type	Miniature	Miniature	Miniature	Subminiature	Subminiature	Ultraminiature	Power	Sealed power	Power
Poles/Throws	SPDT, DPDT, 3PDT, 4PDT	SPDT, DPDT	SPDT, DPDT, 3PDT	SPST, SPDT, DPDT	SPST, SPDT, DPDT	SPST, SPDT, DPST, DPDT	DPDT	SPST, DPST	SPST
Maximum Current Silver/Gold	5 Amps	5 Amps	7.5 Amps/ 5 Amps	3 Amps/ 2 Amps	3 Amps/ 2 Amps	0.4 VA	10 Amps	25 Amps	20 Amps
Process Sealed			•	•		•		•	
PCB Mount Options									
Vertical	•	•	•	•	•	•	•		
Right Angle	•	•	•	•	•	•			
Vertical Right Angle	•	•	•	•	•	•	•		
Surface Mount Options									
Vertical						•			
Right Angle				•		•			
Panel Mount Options									
Rear Mount	•	•	•		•		•	•	•
Termination Options									
PCB Thru-hole	•	•	•	•	•	•	•		
Wire Wrap	•		•	•	•				
Solder Lug	•	•	•		•		•	•	
Quick Connect	•		•				•	•	•
Other Available Options									
Support Brackets	•	•	•	•	•	•	•		•
Snap-in Retention	•		•	•					•
ESD Protection	•		•	•	•				•
Tape & Reel				•		•			
Bushing Options									
10-48					•				
1/4-40	•	•	•		•		•		
15/32	•						•	•	
M6P 0.75 (Metric)	•								
Page No.	F-3	F-17	F-22	F-30	F-37	F-43	F-50	F-55	F-59

