



SPECIFICATIONS

RATING: 0.3A 50V DC

FUNCTION: 1P2T

TIMING: NON-SHORTING

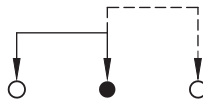
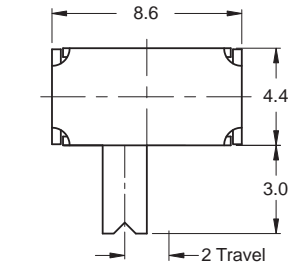
CONTACT RESISTANCE: 100 mΩ MAX.

INSULATION RESISTANCE: 100 MΩ min.

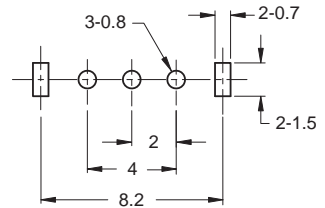
OPERATION FORCE: 250gf±100gf

PRACTICAL TEMPERATURE RANEG: -16°C to +60°C

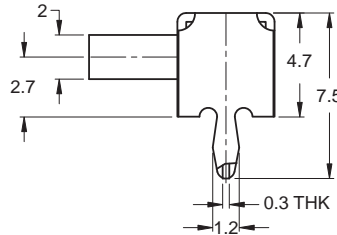
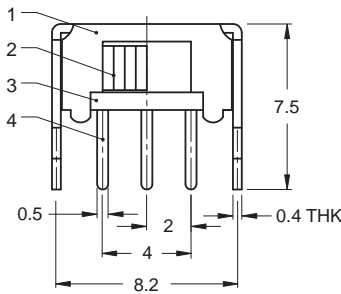
▼ DIMENSION



SCHMATIC
(NON-SHORTING)

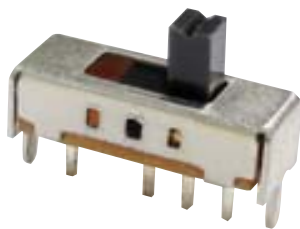


P.C.B LAYOUT
BOTTOM VIEW



Model name. KSD-SS1209AHP-V3-LLR-B

NO.	PARTS	MATERIALS	QTY	FINISH
6	Spring plate	SUS	1	Ag plated
5	Contact clip	PBS strip	1	Ag plated
4	Terminal	Brass strip	3	Ag plated
3	Base	Phenolic resin	1	Natural
2	Knob	POM	1	Black
1	Frame	Steel strip	1	Ni plated



SPECIFICATIONS

RATING: 0.3A 50V DC

FUNCTION: 1P3T

TIMING: SHORTING

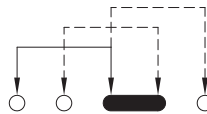
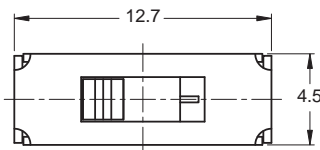
CONTACT RESISTANCE: 100 mΩ MAX.

INSULATION RESISTANCE: 100 MΩ min.

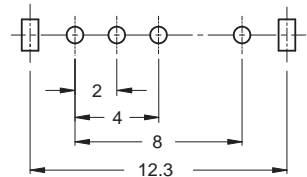
OPERATION FORCE: 250gf±100gf

PRACTICAL TEMPERATURE RANEG: -16°C to +60°C

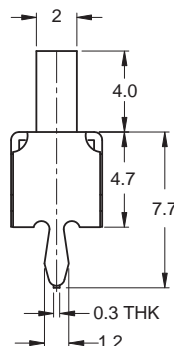
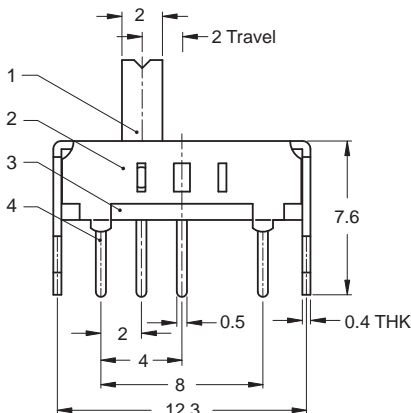
▼ DIMENSION



SCHMATIC
(SHORTING)



P.C.B LAYOUT
BOTTOM VIEW



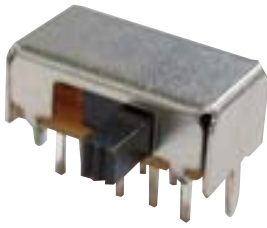
Model name. KSD-SS1305VHP-V4-LLR-B

NO.	PARTS	MATERIALS	QTY	FINISH
6	Spring plate	SUS	1	Natural
5	Contact clip	PBS strip	1	Ag plated
4	Terminal	Brass strip	4	Ag plated
3	Base	Phenolic resin	1	Natural
2	Frame	Steel strip	1	Ni plated
1	Knob	POM	1	Black

KSD-TS Series

Tactile Switches (4.5x4.5 Through Hole)

KSD-TS
Tact Switches



SPECIFICATIONS

RATING: 0.3A 50V DC

FUNCTION: 2P3T

TIMING: SHORTING

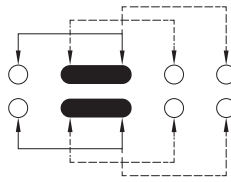
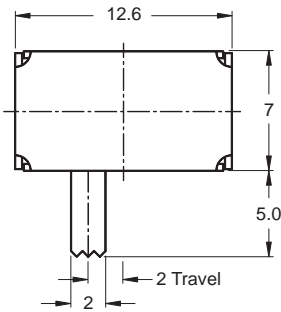
CONTACT RESISTANCE: 100 mΩ MAX.

INSULATION RESISTANCE: 100 MΩ min.

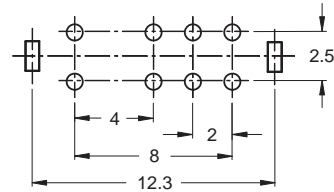
OPERATION FORCE: 300gf±100gf

PRACTICAL TEMPERATURE RANEG: -16°C to +60°C

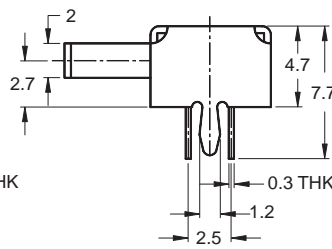
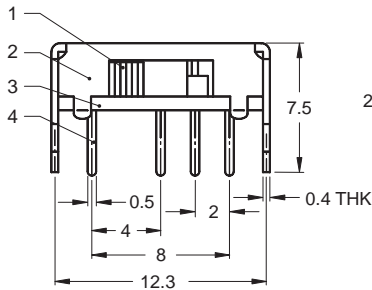
▼ DIMENSION



SCHEMATIC
(SHORTING)



P.C.B LAYOUT
BOTTOM VIEW



6	Spring plate	SUS	1	Natural
5	Contact clip	PBS strip	2	Ag plated
4	Terminal	Brass strip	8	Ag plated
3	Base	Phenolic resin	1	Natural
2	Frame	Steel strip	1	Ni plated
1	Knob	POM	1	Black
NO.	PARTS	MATERIALS	QTY	FINISH

Model name. KSD-SS2303AHP-G5-LLR-B