

KSD-JSX Series Sub-Miniature Slide Switch



Features/Benefits

- RoHS compliant and meets all requirements of RoHS directive 2002/95EC
- Low profile
- SPDT momentary action
- Long electrical and mechanical life

Typical Applications

- On/Off touch screens
- Handheld games
- Remote controls
- Instrumentation



Slide

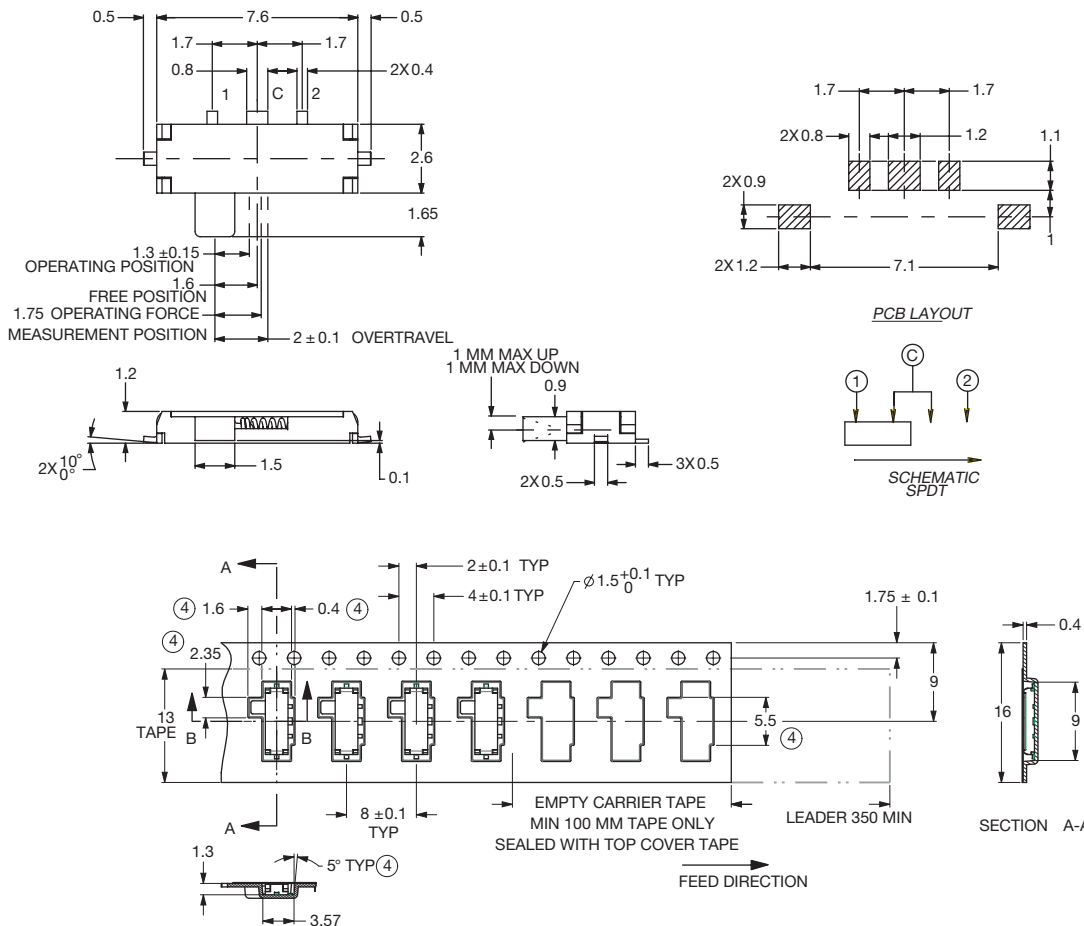
Specifications

CONTACT RATING: 10 mA @ 5VDC (resistive).
 ELECTRICAL LIFE: 100,000 cycles.
 CONTACT RESISTANCE: 70 m Ω max. initial.
 200 m Ω max. after life testing.
 INSULATION RESISTANCE: 100 M Ω min. @ 100VDC.
 DIELECTRIC STRENGTH: 100 VAC for 1 min. @ 50/60 Hz/2mA.
 OPERATING TEMPERATURE: -25°C to +70°C
 STORAGE TEMPERATURE: -40°C to +85°C
 -25°C to +55°C (in tape & reel packaging)

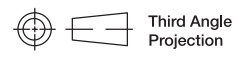
Materials

HOUSING: LCP, Glass filled.
 ACTUATOR: 4/6 nylon (UL94V-2), black.
 CONTACTS: Beryllium copper, silver plated.
 TERMINALS: Phosphur bronze or StSt, silver plated.
 COVER: Nickel silver or Stainless steel, silver plated.
 RETURN SPRING: Stainless steel.

NOTE: Specifications and materials listed above are for switches with standard options. For information on specific and custom switches, consult Customer Service Center.



KSD-JSX08001SAQNL
SPDT Surface Mount
Momentary only



Dimensions are shown: mm
 Specifications and dimensions subject to change