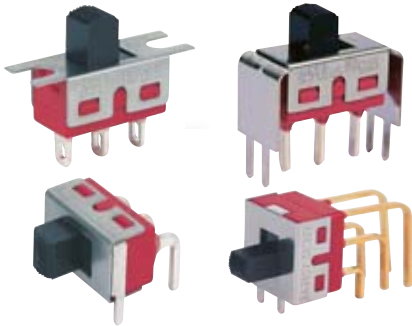


# KSD

SWITCH CONNECTOR

KSD-5M  
Slide Switches



## SPECIFICATIONS

- CONTACT RATING:** Dependent upon contact material, see page 84.
- MECHANICAL LIFE:** 30,000 make-and-break cycles.
- CONTACT RESISTANCE:** 10 mΩ max. (initial value) @ 2-4VDC  
100mA for both silver and gold plated contacts.
- INSULATION RESISTANCE:** 1,000 MΩ min./1000VDC
- DIELECTRIC STRENGTH:** 1,000 Vrms min. @sea level. (initial value)
- OPERATING TEMPERATURE:** -40°C to 85°C.

## MATERIALS

- CASE:** Diallyl phthalate (DAP) (UL94v-0).
- HOUSING:** Stainless steel.
- ACTUATOR:** Nylon, black.
- CONTACT/TERMINALS:** Copper with silver or gold plated.

## HOW TO ORDER

MODEL NO.	ACTUATOR	ACTUATOR COLOR	MOUNTING EARS	TERMINAL TYPE	TERMINAL PLATING	SEAL	RoHS SOLDERING																	
<p><u>SP</u></p> <p>5MS1 ON-NONE-ON</p> <p>5MS2 ON-NONE-(ON)</p> <p>5MS3 ON-OFF-ON</p> <p><u>DP</u></p> <p>5MD1 ON-NONE-ON</p> <p>5MD3 ON-OFF-ON</p>	<p>S0 1.30 high *</p> <p>S1 5.08 high(STD)</p> <p>S2 7.24 high</p> <p>S3 9.40 high</p> <p>S4 3.56 high</p> <p>S5 5.08 high **</p> <p>S7 12.32 high</p>	<table border="1" style="margin-left: auto; margin-right: auto;"> <thead> <tr> <th>ITEM NO</th> <th>COLOR</th> </tr> </thead> <tbody> <tr><td>01</td><td>White</td></tr> <tr><td>02</td><td>Black (Std)</td></tr> <tr><td>03</td><td>Red</td></tr> <tr><td>04</td><td>Orange</td></tr> <tr><td>05</td><td>Yellow</td></tr> <tr><td>06</td><td>Green</td></tr> <tr><td>07</td><td>Blue</td></tr> <tr><td>09</td><td>Gray</td></tr> </tbody> </table> <p style="text-align: center;">****</p>	ITEM NO	COLOR	01	White	02	Black (Std)	03	Red	04	Orange	05	Yellow	06	Green	07	Blue	09	Gray	<p>A NO Mounting Ears</p> <p>B Mounting Ears</p>	<p>M1 Solder Lug</p> <p>M2 PC thru-hole</p> <p>M3 Quick Connect</p> <p>M52 24.20 high, wire wrap</p> <p>M54 26.97 high, wire wrap</p> <p>M6 Right angle, PC thru-hole</p> <p>M7 Vertical right angle, PC thru-hole</p> <p>VS2 V-bracket ***</p>	<p>Q Silver</p> <p>R Gold</p> <p>C Gold over silver</p> <p>E EPOXY (std)</p> <p>N NO EPOXY</p>	<p>S RoHS &amp; Lead Free</p>
ITEM NO	COLOR																							
01	White																							
02	Black (Std)																							
03	Red																							
04	Orange																							
05	Yellow																							
06	Green																							
07	Blue																							
09	Gray																							

\* Actuator S0 is not applicable for 5MS3.  
 \*\* Only available for DPDT.  
 \*\*\* Not applicable for actuator S5.  
 \*\*\*\* Except standard color, for other colors information please consult sales representativity.

EXAMPLE:  
 5MS1S1□BM1QES  
 □ Actuator Color

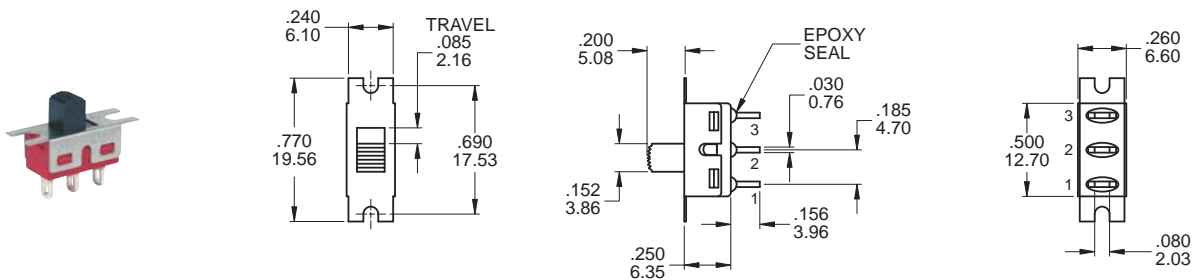


## ▼ SWITCH FUNCTION

NO. POLES	UL/CSA MODEL NO.	MODEL NO.	SWITCH FUNCTION			CONNECTED TERMINALS / SCHEMATIC		
			POS.1	POS.2	POS.3	POS.1	POS.2	POS.3
SP	Q1511	5MS1	ON	NONE	ON	2-1	N/A	2-3
	Q1512	5MS2	ON	NONE	(ON)	2 (COMM) 1 • 3	OPEN	2 (COMM) 1 • 3
	Q1513	5MS3	ON	OFF	ON			1 • 3
DP	Q1521	5MD1	ON	NONE	ON	2-1,5-4	N/A	2-3,5-6
	Q1523	5MD3	ON	OFF	ON	2 (COMM) 1 • 3    5 • 6	OPEN	2 (COMM) 1 • 3    4 • 6

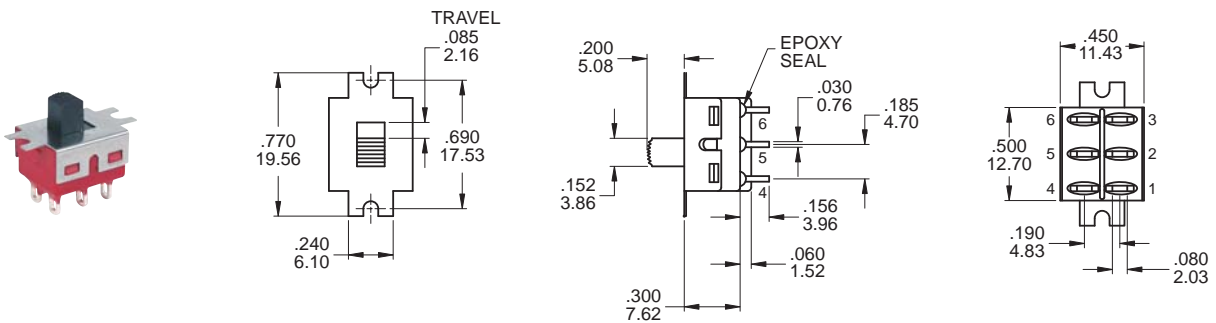
( )=MOMENTARY

## ▼ POLE OPTIONS



### SPDT

Model name. KSD-5MS1S102BM1QES

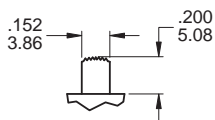


### DPDT

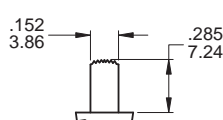
Model name. KSD-5MD1S102BM1QES

## ▼ ACTUATOR OPTIONS

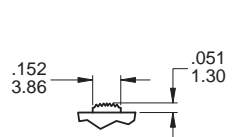
### S1 (Std.)



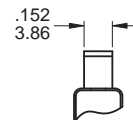
### S2



### S0 \*

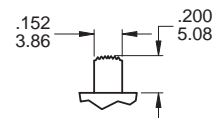


### FRONT

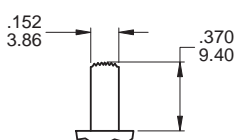


### ▲ S5

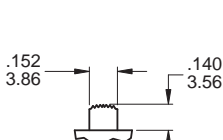
Only available for DPDT



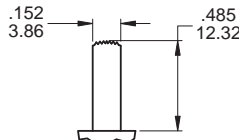
### S3



### S4

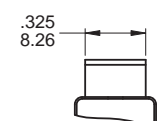


### S7



For S0~S4 and S7 actuator

### FRONT



\* Actuator S0 is not applicable for 5MS3.

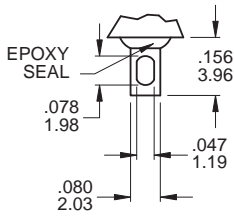
Note: For terminal M6, M7, VS2: -.014inch(0.36mm)



KSD-5M  
Slide Switches

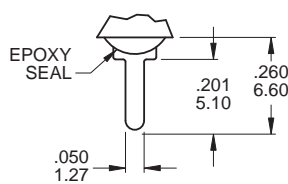
## ▼ TERMINAL OPTIONS

### M1 Solder lug



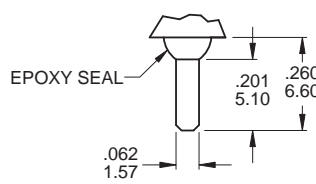
.030inch(0.76mm)THK

### M2 PC Thru-hole



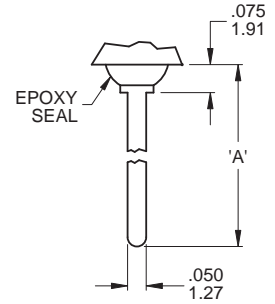
.030inch(0.76mm)THK

### M3 Quick connect



.030inch(0.76mm)THK

### M5 Wire Wrap



.030inch(0.76mm)THK

## ▼ OTHER TERMINAL OPTIONS

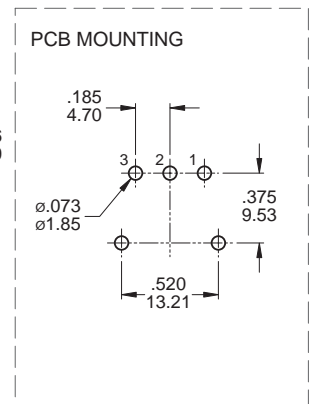
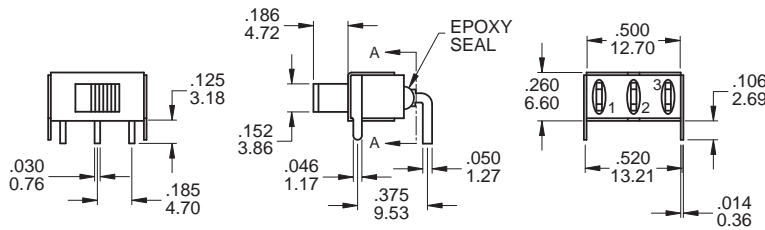
**M6** Right angle P.C. Mount

**M7** Right angle P.C. Mount

**VS2** Vertical bracket P.C. Mount

OPTION CODE	DIM. 'A'
M52	.953 (24.20)
M54	1.062 (26.97)

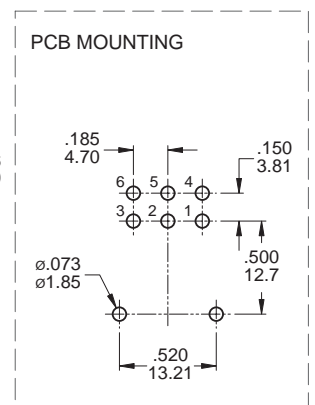
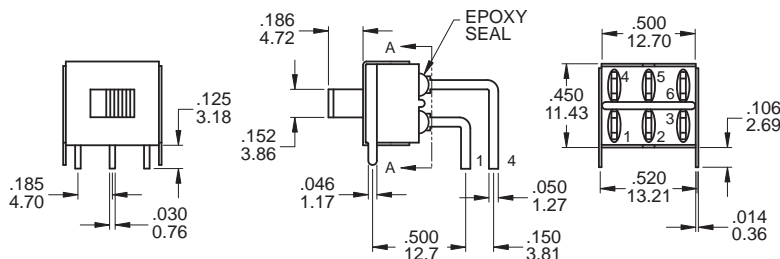
## KSD-M6



**SPDT**

Model name. KSD-5MS1S102AM6QES

## KSD-M6

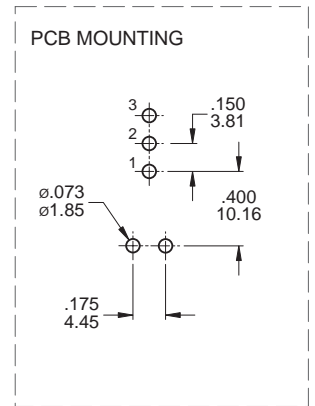
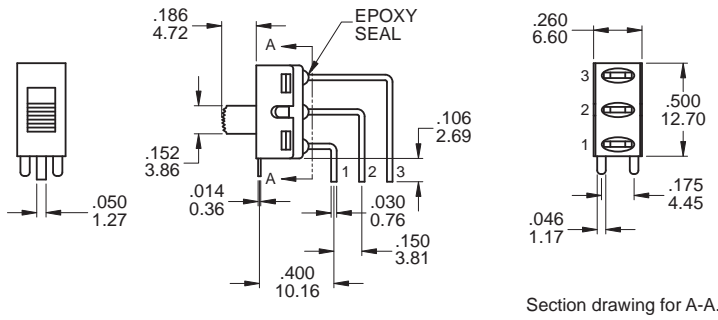


**DPDT**

Model name. KSD-5MD1S102AM6QES



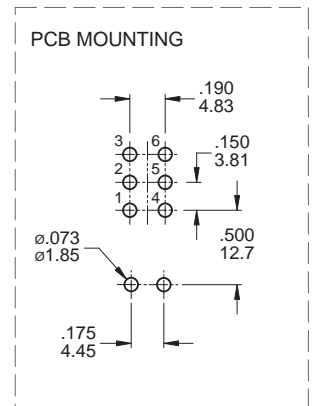
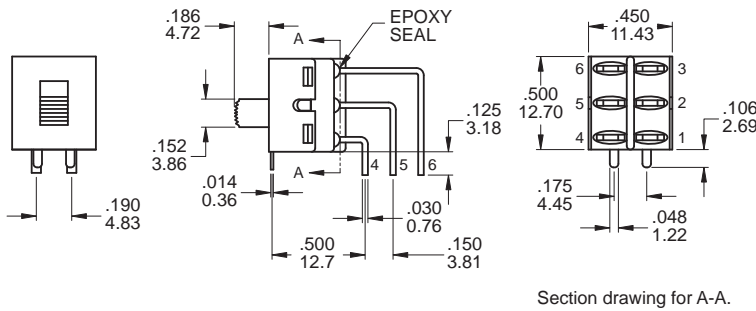
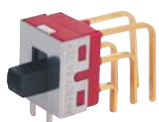
## KSD-M7



**SPDT**

Model name. KSD-5MS1S102AM7QES

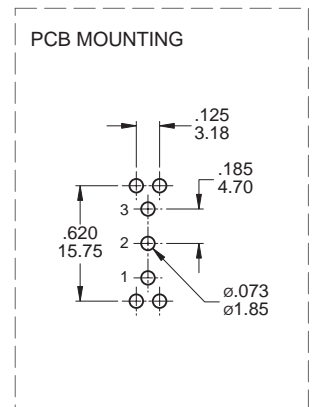
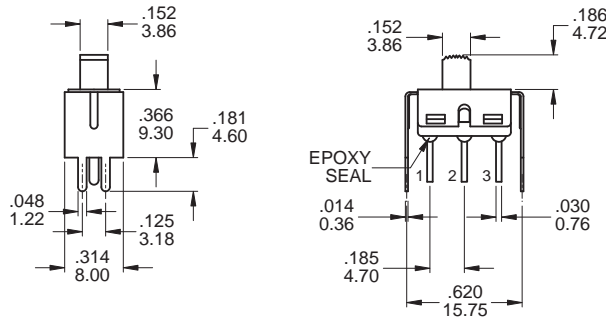
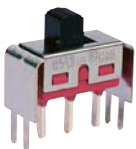
## KSD-M7



**DPDT**

Model name. KSD-5MD1S102AM7RES

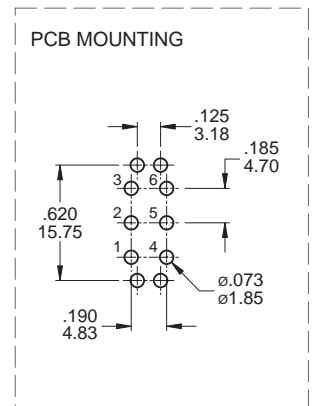
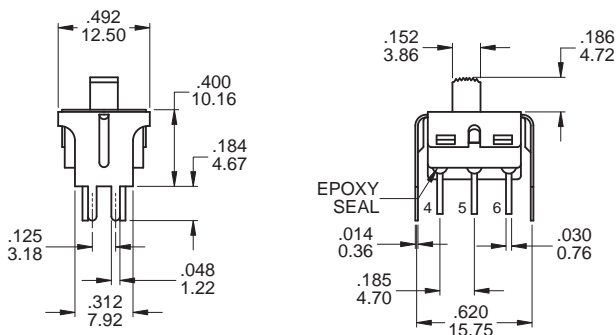
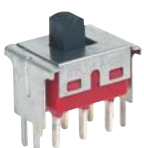
## KSD-VS2



**SPDT**

Model name. 5MS1S102AVS2QES

## KSD-VS2

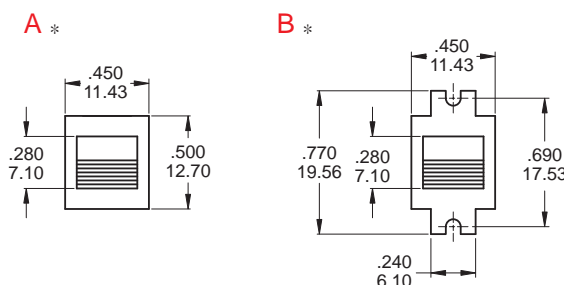
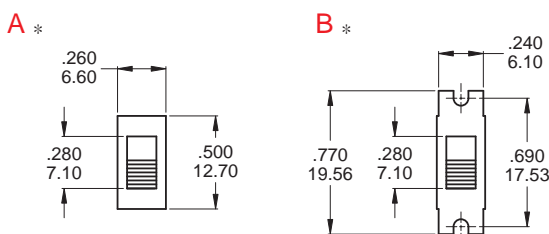
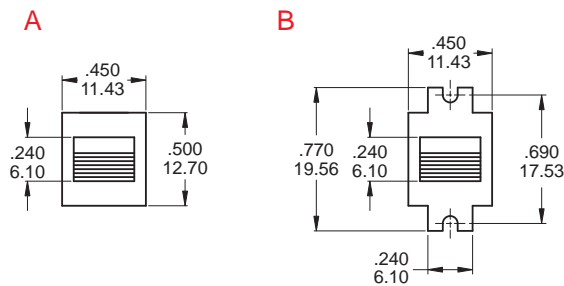
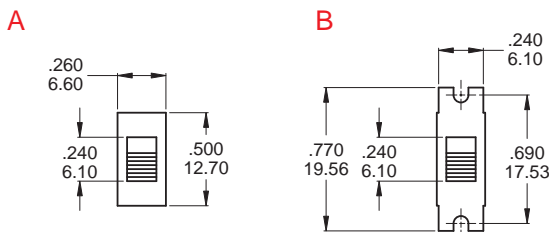


**DPDT**

Model name. KSD-5MD1S102AVS2QES



## ▼ MOUNTING EARS



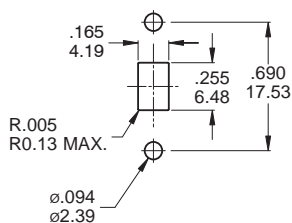
\* Three positions only

Note: Standard for S0-S4 and S7 actuator.

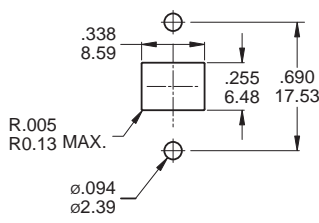
\* Three positions only

Note: Standard for S5 actuator.

## ▼ PANEL MOUNT

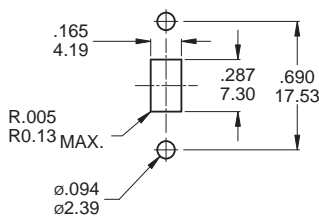


For S0-S4 and S7 actuator

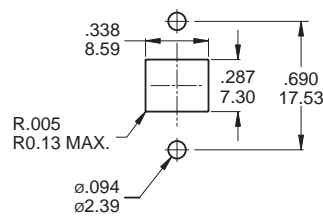


For S5 actuator only

Three positions only



For S0-S4 and S7 actuator



For S5 actuator only

## ▼ CONTACT & TERMINAL PLATING OPTIONS

	CONTACT PLATING	TERMINAL PLATING	RATINGS
Q	Silver	Silver	5 Amps with resistant load @ 120VAC or 28VDC 2 Amps with resistant load @ 250VAC
C	Gold over Silver	Gold over silver	
R	Gold	Gold	0.4 Volt - Amps ( VA ) max. @ 20V max. ( AC or DC )

## ▼ SOLDERING PROCESS

**MANUAL SOLDERING:** Use 30 watts soldering iron and controlled the temperature at 350°.

Duration of solder immersion: Max. 5 sec.

**WAVE SOLDERING:** Recommend soldering temperature: 260 ± 5°C

Duration of solder immersion: Max. 5 sec. (PCB thickness is 1.6mm)