

Push-type Detector Switches SW1AG-550 Series

Features

- ◇ Snap-in structure and connector fixing terminal, can be mounted flexibly.
- ◇ Superior reliability at micro-current by employing a sliding contact.

Applications

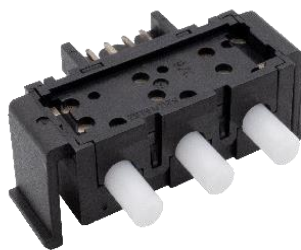
- ◇ Mechatronic detection for photocopy machine.



SW1G-550



SW1AG-552



SW3AG-553



SW4AG-554

Products Line

No	Products No	Pole	Position	Operating force	Notes
1	SW1AG-550	1	1	1N max	
2	SW1AG-552	1	1	(0.686)N	Travel of recommended operating position
3	SW3AG-553	3	1	1.8N max	
4	SW4AG-554	4	1	1.8N max	

Typical Specifications

Item	Specification
Ratings (max / min.)	10mA 5V DC / 0.05mA 3V DC (Resistive load)
Contact resistance	100 milliohm max.
Insulation resistance	100 meg ohm min. 100V DC
Withstanding voltage	100V AC for 1min.
Operating life with load	100,000 cycles

Dimensions

Unit : mm

No	Style	P.C.B reference mounting hole Dimensions , Circuit diagram (TOP VIEW)
1	<p>SW1AG-550</p>	
2	<p>SW1AG-552</p>	
3	<p>SW3AG-553</p>	

