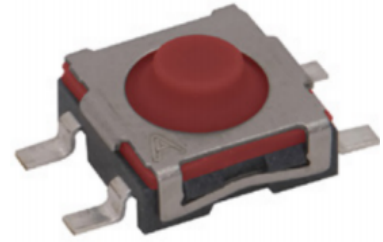


Features/Benefits

- 6.0 x 6.1 mm dimension
- Height 3.45 mm
- Soft actuator
- Long life - 3M cycles
- IP54

Typical Applications

- Elevator button & alarm
- Robotic vaccum
- Door handle
- Mower



Tactile Switches

Specification

FUNCTION: Momentary action
CONTACT ARRANGEMENT: SPDT, NC
TERMINALS: SMT termination
TRAVEL: 0.3 ± 0.2 mm

Mechanical

OPERATING LIFE: 2,000,000 cycles

Electrical

VOLTAGE: DC 1V to 16V
CURRENT: 10µA to 50mA
CONTACT RESISTANCE: 200mΩ max.
500mΩ max. after testing
INSULATION RESISTANCE: 100 MΩ min.
DIELECTRIC VOLTAGE: AC 250V

Environmental

OPERATING TEMPERATURE: -40°C to 90°C
STORAGE TEMPERATURE: -40°C to 90°C

Process

SOLDERING: This component is suited to the following methods: Infrared Reflow Soldering in accordance with IEC61760-1

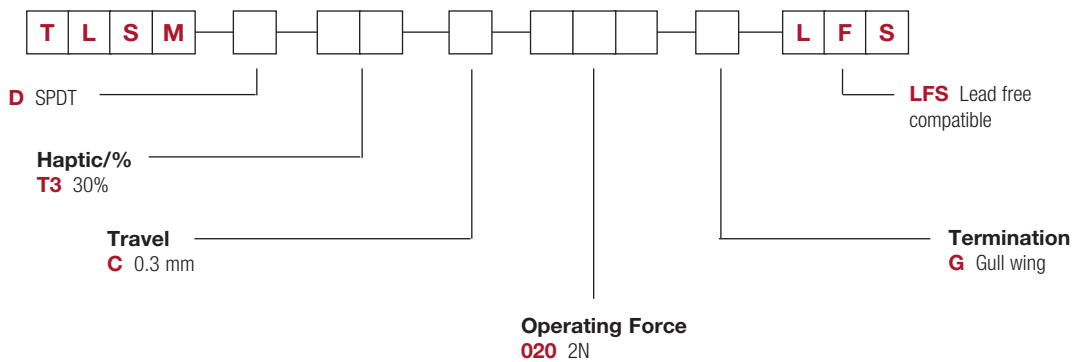
Packaging

1100 pieces per reel

How To Order

Our easy build-a-switch concept allows you to mix and match options to create the switch you need. To order, select desired option from each category and place it in the appropriate box.

For any part number different from those listed above, please consult your local representative.



First Angle Projection

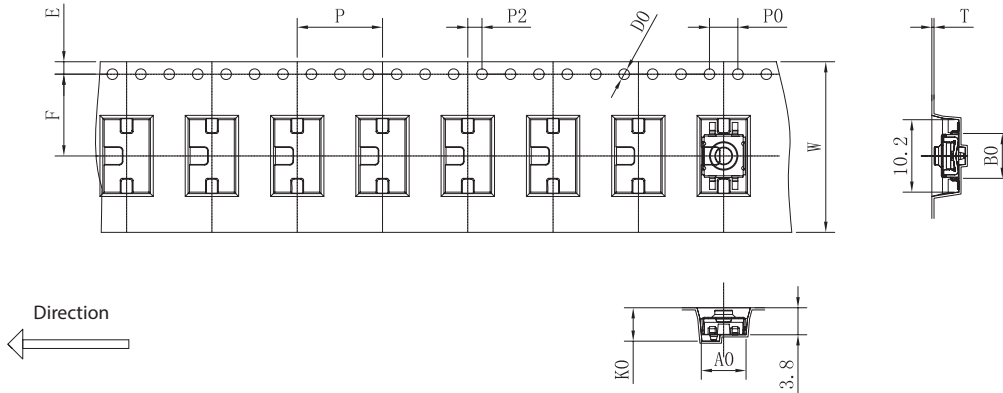
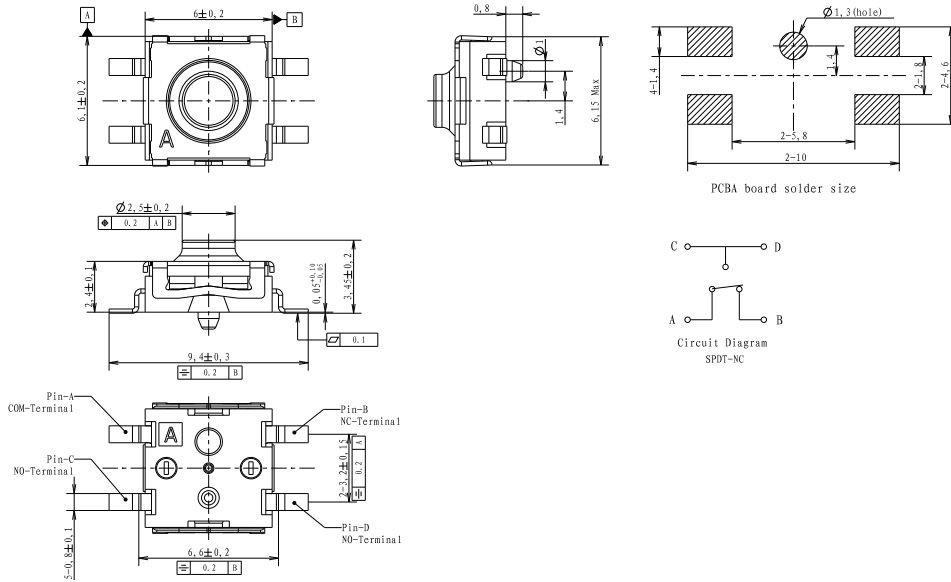
Dimensions are shown: mm
Specifications and dimensions subject to change

TLSM Series

NEW

6 mm Compact Top Mount Endurance SMT Tact Switch

KSD
SWITCH CONNECTOR



Dimensions are shown: mm
Specifications and dimensions subject to change

B

Tactile Switches