

RKC2 Series

Microminiature SMT Top Actuated Tactile Switch



全球互接零组件制造企业
GUANGDONG KOSOD TECHNOLOGY CO., LTD



Description

RKC2 series is microminiature SMT top actuated tactile switch with different choices of actuation force and up to 200k lifecycles. The switch is ideal for applications that need a high density of components in limited PCB space, such as automotive keyfob, high-end consumer and health & medical devices.

Features & Benefits

- 1.7 mm height, 3.5 x 2.7 mm size
- SMT termination
- Hard actuator
- 180, 250, 350 & 500 gf actuation forces
- 100k to 200k cycles

Applications

- Automotive Keyfob
- High-end Consumer
- Health & medical devices

Specifications

| | |
|----------------------------|----------------------------|
| Function | Momentary action |
| Contact Arrangement | 1 make contact = SPST N.O. |
| Terminals | SMT termination |
| Travel | 0.15 ± 0.1 mm |

Electrical Characteristics

| | |
|------------------------------|---------------------|
| Max. Voltage | 12 VDC |
| Max. Current DC | 20 mA |
| Contact Resistance | 100 mΩ |
| Insulation Resistance | 100 mΩ min. |
| Dielectric Strength | 250 VA C (1 minute) |
| Bounce Time | ≤ 10 ms |

Environmental Characteristics

| | |
|------------------------------|---------------|
| Operating Temperature | -40°C to 85°C |
|------------------------------|---------------|

Process

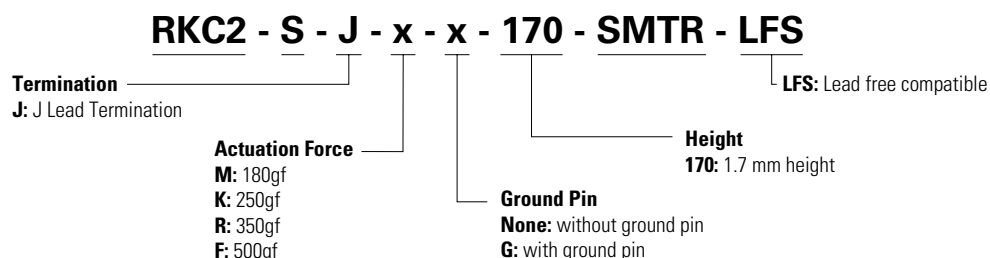
| | |
|------------------|--|
| Soldering | This component is suited to the following methods: Infrared Reflow Soldering in accordance with IEC61760-1 |
| Packaging | 4,000 pieces per reel |

Mechanical Characteristics

| Type | Life (cycles) |
|---------------------|---------------|
| RKC2SJM170SMTR LFS | 200,000 |
| RKC2SJK170SMTR LFS | |
| RKC2SJR170SMTR LFS | |
| RKC2SJF170SMTR LFS | 100,000 |
| RKC2SJFG170SMTR LFS | 200,000 |

Ordering Number

Our easy build-a-switch concept allows you to mix and match options to create the switch you need. To order, select desired option from each category and place it in the appropriate box. For any part number different from those listed above, please consult your local representative.

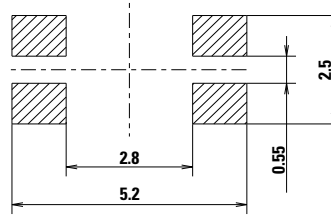
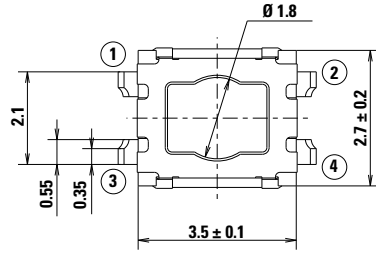


RKC2 Series

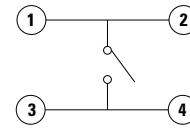
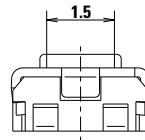
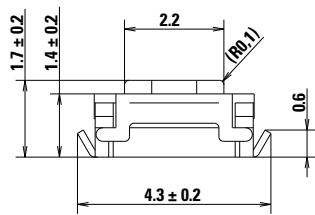
Microminiature SMT Top Actuated Tactile Switch



Standard Version without Ground Pin

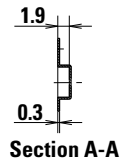
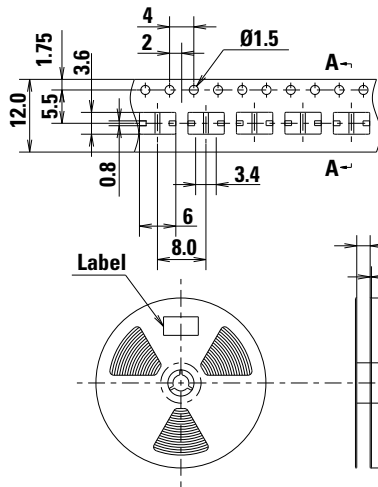


PCB Land Dimension

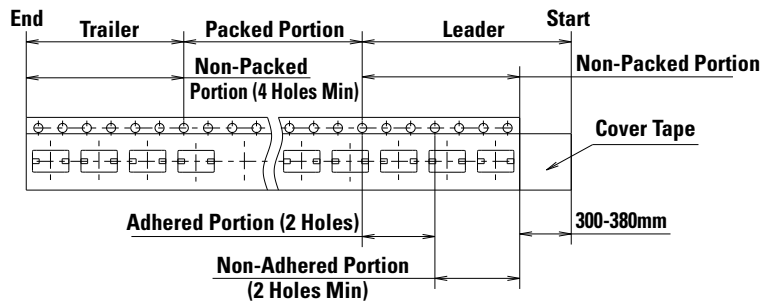
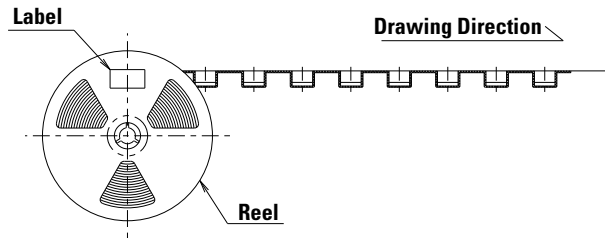


Circuit Diagram

Tape & Reel



Section A-A



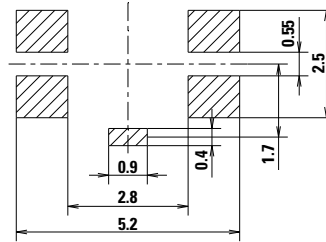
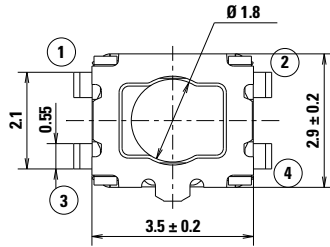
- Notes:
1. 4,000 pieces switches per 1 reel
 2. General Tolerance: 0.3mm

RKC2 Series

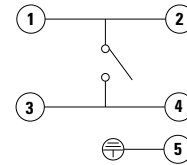
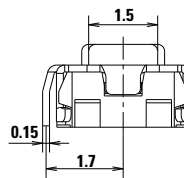
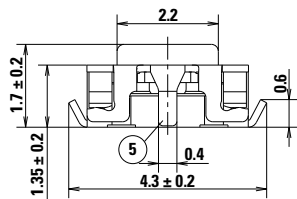
Microminiature SMT Top Actuated Tactile Switch



Version with Ground Pin

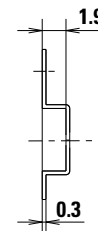
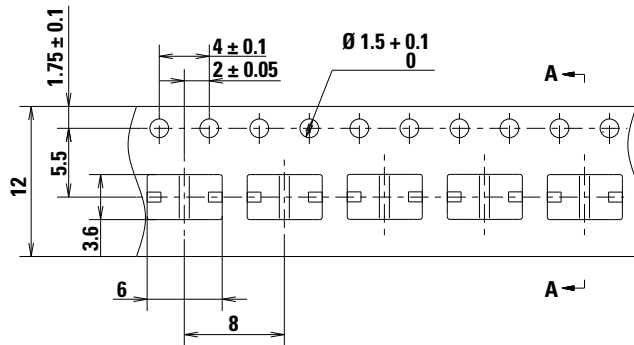


P.C.B. Layout

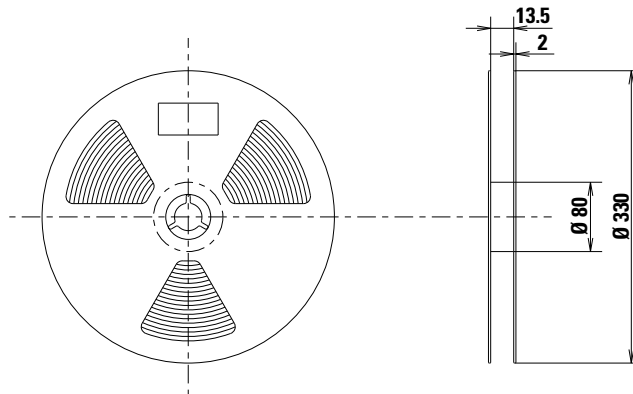


Circuit Diagram

Tape & Reel



Section A-A



Notes:
 1. 4,000 pieces switches per 1 reel
 2. General Tolerance: $\pm 0.3\text{mm}$

Disclaimer Notice - Information furnished is believed to be accurate and reliable. However, users should independently evaluate the suitability of and test each product selected for their own applications. Littelfuse products are not designed for, and may not be used in, all applications. Read complete Disclaimer Notice at