



KSD

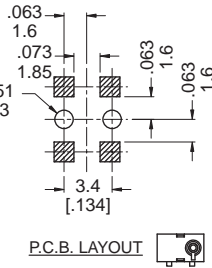
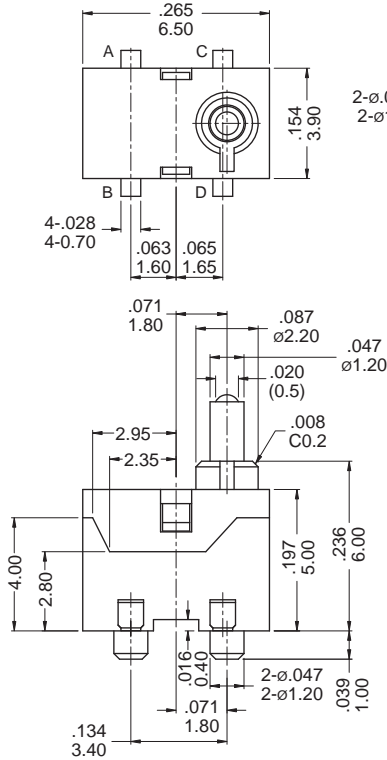
SWITCH CONNECTOR

SPECIFICATIONS

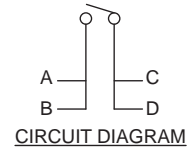
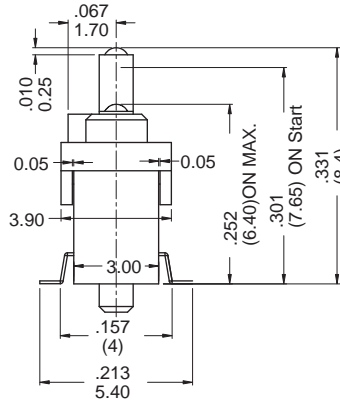
- CONTACT: Stainless Steel
- RATING: 50mA , 5VDC
- STROKE: 2mm
- OPERATING FORCE: 35gf max
- CONTACT RESISTANCE: 500mΩ max.

▼ MODEL OPTIONS

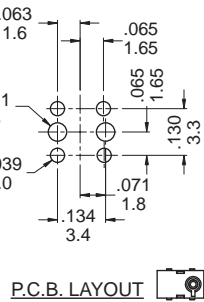
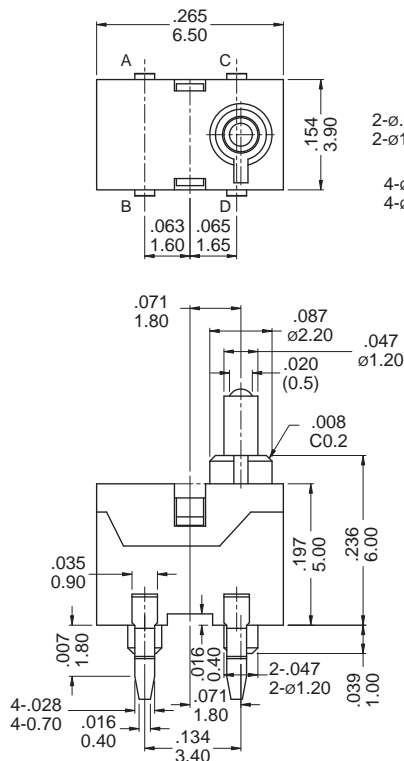
KSD-TE-M



NOTE:
1. ALL DIMENSIONS ARE IN MILLIMETERS,
[] DIMENSIONS ARE IN INCHS.
2. GENERAL TOLERANCE: ±0.2 mm



KSD-TE-H



NOTE:
1. ALL DIMENSIONS ARE IN MILLIMETERS,
[] DIMENSIONS ARE IN INCHS.
2. GENERAL TOLERANCE: ±0.2 mm

