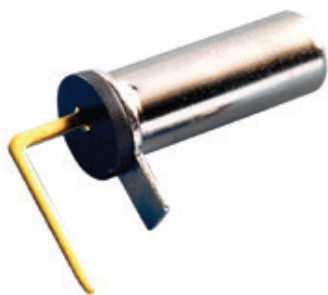


KSD-RB Series Rolling Ball Sensor Switch



Features/Benefits

- Different angle options to trigger
- Ultra miniature design
- Patent awarded

Typical Applications

- Household goods
- Electronic toys
- Consumer electronics including irons, portable heaters, games, toys
- Safety and security controls

How To Order

Part number list is shown below. For individual part details, please refer to the following.

Part Number (Part Description)	Product Details
RB-231X2	Rolling Ball Sensor Switch
RB-220-07A R	Rolling Ball Sensor Switch



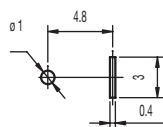
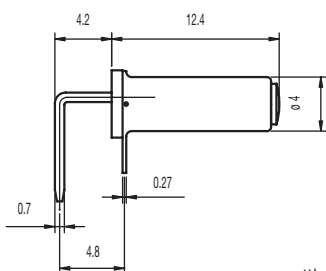
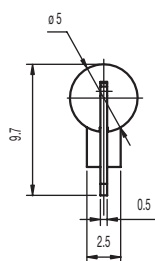
PART NUMBER	PACKAGING
KSD-RB-231X2	1,000 pieces

Specifications

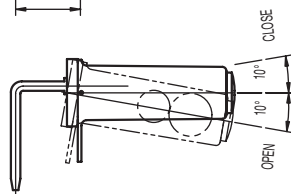
CONTACT ARRANGEMENT: SPST
 SENSOR ANGLE: 0° to -10° scope inside, terminal to disconnection electric current
 MINIMUM VOLTAGE: 1 VDC 10mA (resistive load)
 MAXIMUM VOLTAGE: 5 VDC 1mA (resistive load)
 OPERATING LIFE: 100,000 cycles
 INSULATION RESISTANCE: 1000 M Ω min. @ 100 VDC
 DIELECTRIC STRENGTH: 500 V AC (50-60 Hz)
 OPERATING TEMPERATURE: -20°C to +70°C

Materials

FRAME: Copper alloy, nickel plated
 COVER: PA 46 (UL94V-0)
 MOVABLE CONTACT: Copper alloy, nickel plated
 TERMINALS: Copper alloy, gold plated
 BRASS BALL: Brass, gold plated



PCB LAYOUT



m

Detect

PART NUMBER	PACKAGING
KSD-RB-220-07A R	500 pieces

Specifications

CONTACT ARRANGEMENT: SPST

SENSOR ANGLE: In the range of 15° to 90°, current appears between terminals

MINIMUM VOLTAGE: 1 VDC 10 μ A (resistive load)

MAXIMUM VOLTAGE: 5 VDC 1mA (resistive load)

OPERATING LIFE WITH LOAD: 100,000 cycles

INSULATION RESISTANCE: 10 M Ω min. @ 100 VDC

DIELECTRIC STRENGTH: 100 V AC (50-60 Hz)

OPERATING TEMPERATURE: -10°C to +50°C

Materials

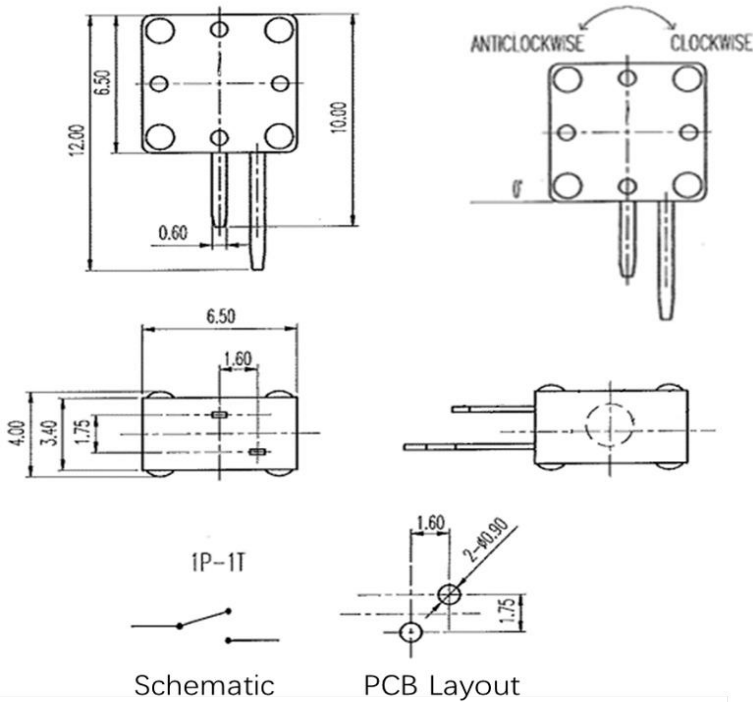
COVER: PA

HOUSING: PA

SILICON SHEET: Silica

TERMINALS: Copper alloy, gold plated

BRASS BALL: Brass, gold plated



Detect