





TACT  
SWITCH

PUSH  
BUTTON  
SWITCH

LED TOUCH  
SENSOR  
SWITCH

5 DIRECTION  
NAVIGATION  
SWITCH  
WITH LED

MEMBRANE  
SWITCH

LED LIGHT  
BAR

SLIDE  
SWITCH

ROTARY  
SWITCH

ROCKER  
SWITCH

DETECT  
SWITCH

ENCODER

INTERRUPTER

MINIATURE  
MICRO  
SWITCH

TELEPHONE  
HOOK  
SWITCH

DOOR  
SWITCH

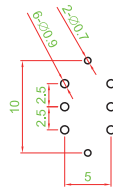
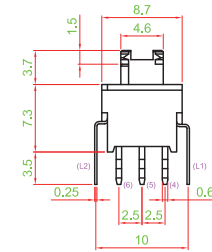
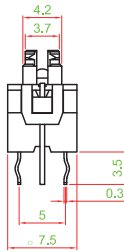
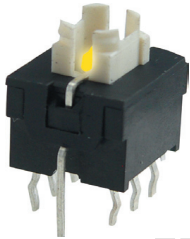
MINI SIZE  
SOCKET

KNOB

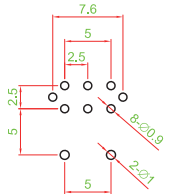
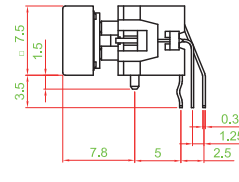
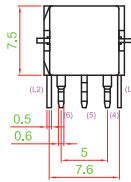
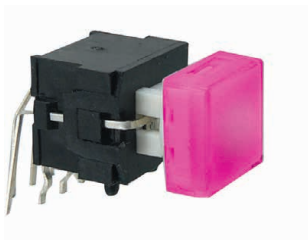
CAP  
SYMBOL

▶ TERMINAL TYPE

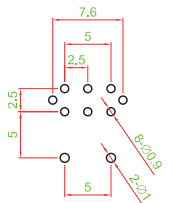
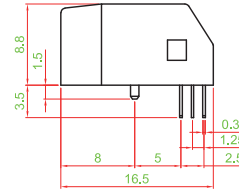
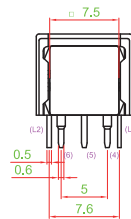
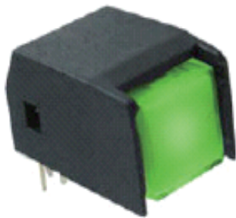
PS004-L22NPXXX □□□□



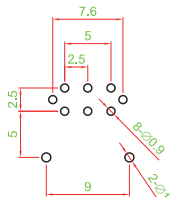
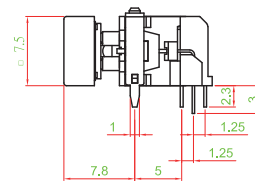
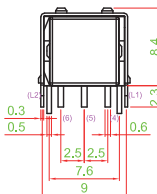
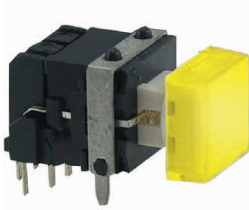
PS004-N22NRS1XT □□□□



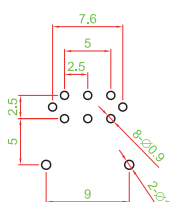
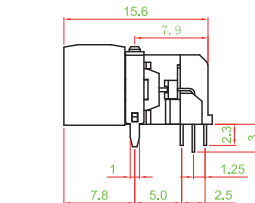
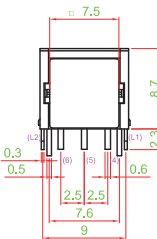
PS004-N22NRS1KT □□□□



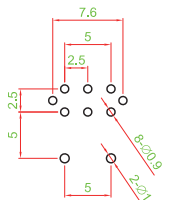
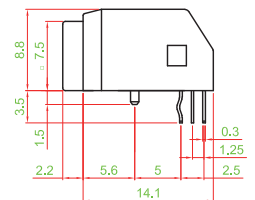
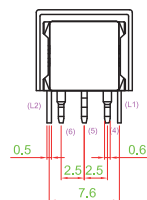
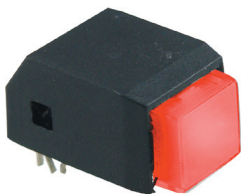
PS004-N22NR1S1XT □□□□



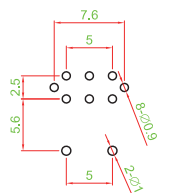
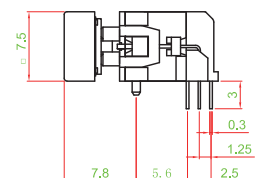
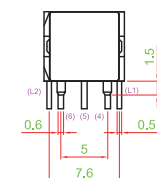
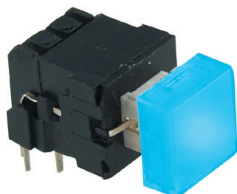
PS004-N22NR2S1KT □□□□



PS004-N22NR3S1KT □□□□



PS004-N22NR4S1XT □□□□

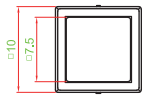




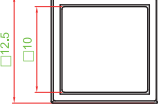
▶ **CAP TYPE**



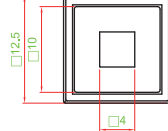
**S1 TYPE**



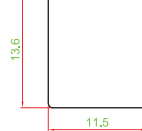
**S2 TYPE**



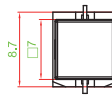
**S2H TYPE**



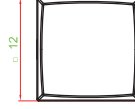
**S3 TYPE**



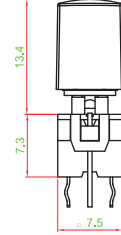
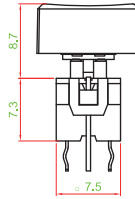
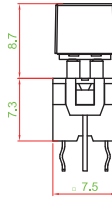
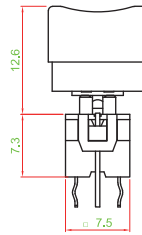
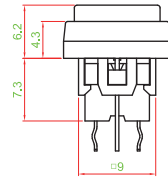
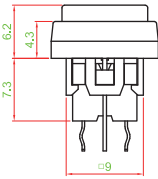
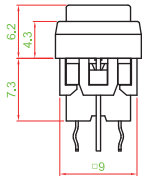
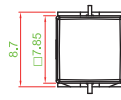
**S4 TYPE**



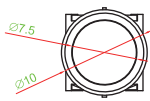
**S5 TYPE**



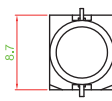
**S6 TYPE**



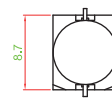
**R1 TYPE**



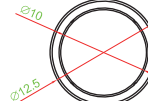
**R1A TYPE**



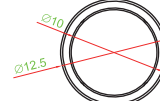
**R1B TYPE**



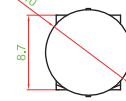
**R2 TYPE**



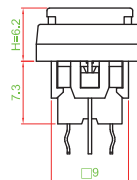
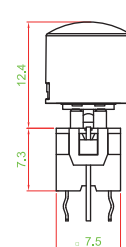
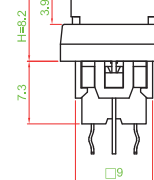
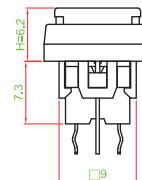
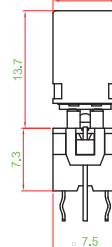
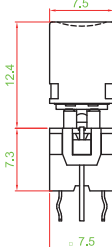
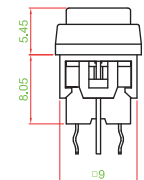
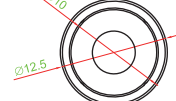
**R2.1 TYPE**



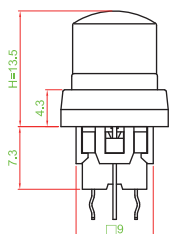
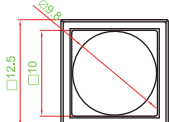
**R2.2 TYPE**



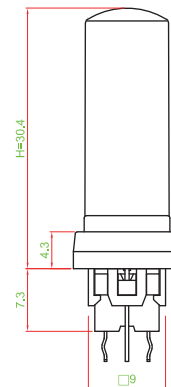
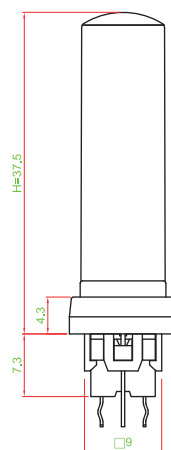
**R2H TYPE**



**R3 TYPE**

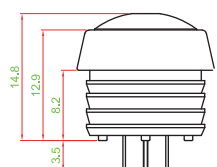
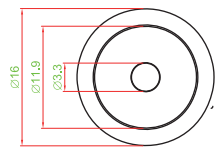


**R3.1 TYPE**



**R3.2 TYPE**

**R4 TYPE**



- TACT SWITCH
- PUSH BUTTON SWITCH
- LED TOUCH SENSOR SWITCH
- 5 DIRECTION NAVIGATION SWITCH WITH LED
- MEMBRANE SWITCH
- LED LIGHT BAR
- SLIDE SWITCH
- ROTARY SWITCH
- ROCKER SWITCH
- DETECT SWITCH
- ENCODER
- INTERRUPTER
- MINIATURE MICRO SWITCH
- TELEPHONE HOOK SWITCH
- DOOR SWITCH
- MINI SIZE SOCKET
- KNOB
- CAP SYMBOL

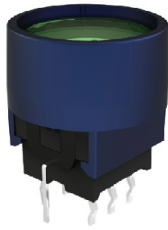
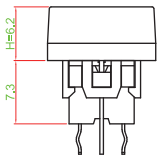
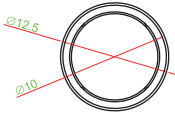


- TACT SWITCH
- PUSH BUTTON SWITCH
- LED TOUCH SENSOR SWITCH
- 5 DIRECTION NAVIGATION SWITCH WITH LED
- MEMBRANE SWITCH
- LED LIGHT BAR
- SLIDE SWITCH
- ROTARY SWITCH
- ROCKER SWITCH
- DETECT SWITCH
- ENCODER
- INTERRUPTER SWITCH
- MINIATURE MICRO SWITCH
- TELEPHONE HOOK SWITCH
- DOOR SWITCH
- MINI SIZE SOCKET
- KNOB
- CAP SYMBOL

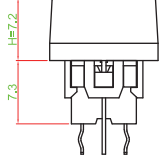
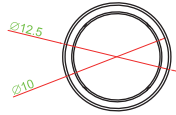
### ▶ CAP TYPE



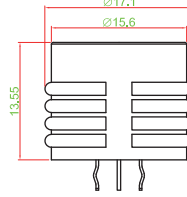
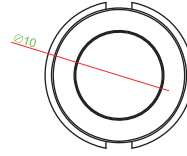
R2A TYPE



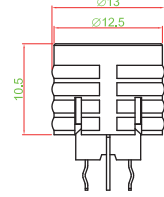
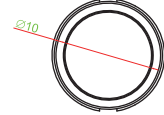
R2B TYPE



R2C TYPE



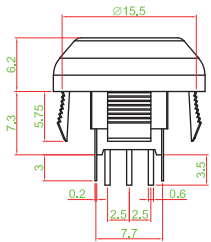
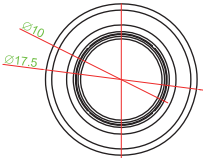
R2D TYPE



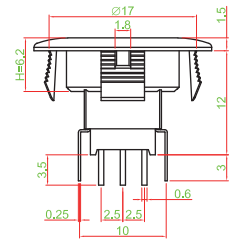
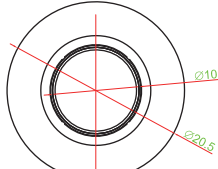
### ▶ CAP TYPE (PANEL MOUNT)



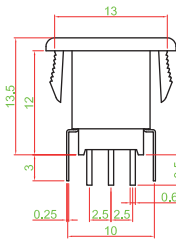
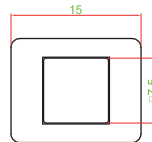
R2E TYPE



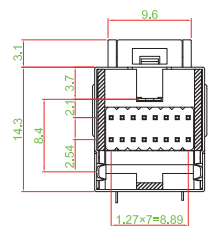
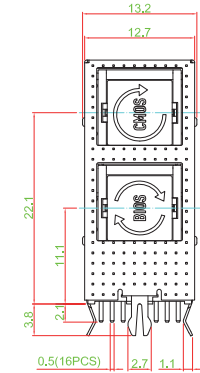
R2F/ R2.1F TYPE



S1A TYPE



PS004-T42NR5S1SK □□□□

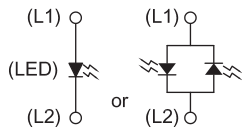
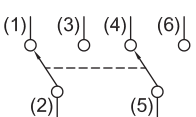


Z	D
0 ~ 0.5	15.6 ~ 15.7
0.5 ~ 2.0	15.7 ~ 15.8
2.0 ~ 2.5	15.8 ~ 15.9
2.5 ~ 3.0	15.9 ~ 16.0
3.0 ~ 3.5	16.0 ~ 16.1

▶ PANEL CUT OUT	
Z	D
0 ~ 0.5	17 ~ 17.1
0.5 ~ 2.0	17.1 ~ 17.2
2.0 ~ 2.5	17.2 ~ 17.3
2.5 ~ 3.0	17.3 ~ 17.4
3.0 ~ 3.5	17.5 ~ 17.6
DIMENSION	
CAP	H=6.2 mm
R2F	H=8.2 mm
R2.1F	H=8.2 mm

▶ PANEL CUT OUT	
PANEL THICK	W
0.75 ~ 1.25	13.1 ~ 13.2
1.25 ~ 2.0	13.2 ~ 13.3
2.0 ~ 3.0	13.3 ~ 13.4

### ▶ CIRCUIT



TERMINAL TYPE : R5

