



FEATURES

Center push + 4 directional Tact
7.3×7.5×H(5.0mm)

APPLICATIONS

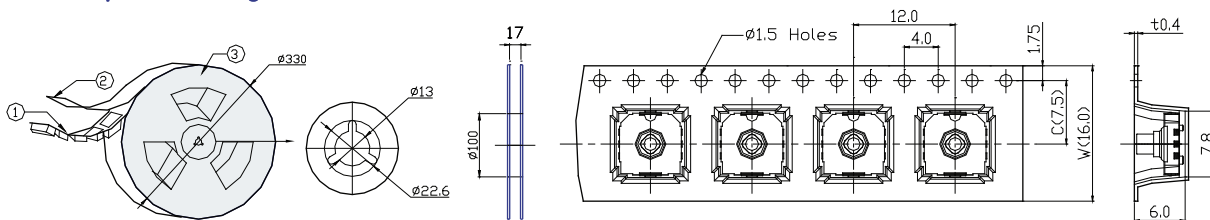
All kinds of electronic equipments such as
car audio and home appliances
Digital Camera, Camcorders, Mobile Phones

COMMON SPECIFICATIONS

Electrical	Rating	DC 12V 50mA	
	Contact Resistance	100mΩ Max.	
	Insulation Resistance	100MΩ Max.	
	Withstand Voltage	AC 250V Min.	
Mechanical	Travel	0.25±0.1mm	4 Directional
		0.15±0.1mm	Center
	Operating Force	130±50gf	4 Directional
		240±50gf	Center
Endurance	Operating Life(cycles)	200,000	

No.	Model No.	Dimension Type	PCB Land Dimension Circuit Diagram
1	IT-1501		

IT-1501 Tape & Reel Package Dimensions



No.	IT-1501 (Knob H mm)	W	C	Pitch	Min. Package Qty / Reel	Qty / Out-carton
1	5.0mm	16	7.5	12	1,000 pcs	20,000 pcs