



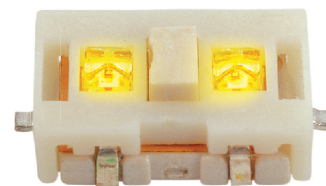
- TACT SWITCH
- PUSH BUTTON SWITCH
- LED TOUCH SWITCH
- 5 DIRECTION NAVIGATION SWITCH WITH LED
- MEMBRANE SWITCH
- LED LIGHT BAR
- SLIDE SWITCH
- ROTARY SWITCH
- ROCKER SWITCH
- DETECT SWITCH
- ENCODER
- INTERRUPTER
- MINIATURE MICRO SWITCH
- TELEPHONE HOOK SWITCH
- DOOR SWITCH
- MINI SIZE SOCKET
- KNOB
- CAP SYMBOL

Feature :

- Compact size
- Two LEDs inside
- SMD

Applications :

- Consumer products
- Computer products
- Instrumentation
- Communication equipments
- Hand-held devices

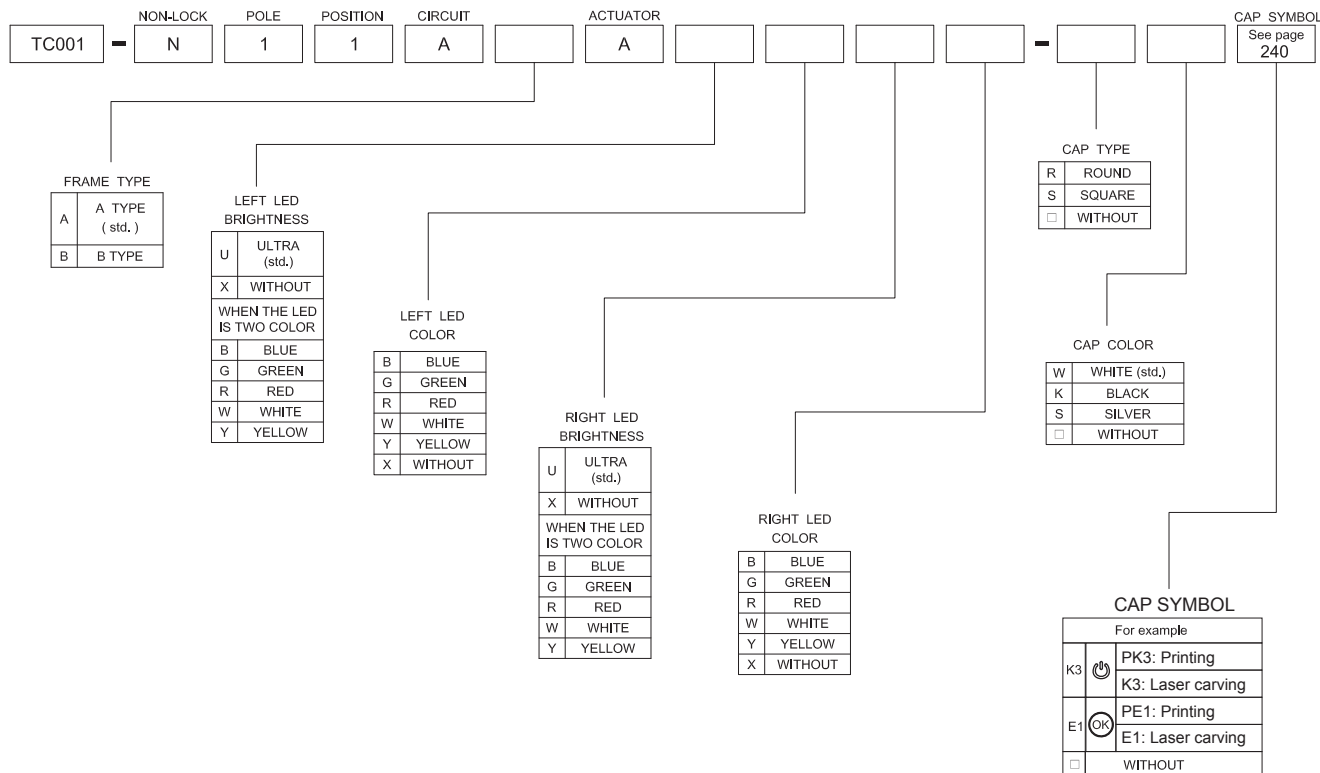


SWITCH SPECIFICATIONS	
POLE - POSITION	Momentary Type , SPST with LED
CONTACT RATING	12 V DC , 50 mA MAX. ; 1 V DC , 10 μA MIN.
CONTACT RESISTANCE	500 mΩ MAX. 1.5 V DC ; 100 mA , by Method of Voltage DROP
INSULATION RESISTANCE	100 MΩ MIN. 100 V DC for 1 minute
DIELECTRIC STRENGTH	Breakdown is not Allowable ; 250 V AC for 1 Minute
OPERATING FORCE	160 +75 / -30 gf
OPERATING LIFE	30,000 cycles
OPERATING TEMPERATURE RANGE	-40°C ~ 85°C
TOTAL TRAVEL	0.25 +0.2 / -0.1 mm

LED SPECIFICATIONS		Value / LED Color						
ATTENTION LEDs are Electrostatic Sensitive devices (+) - (-)	Unit	Blue	Pure Green	Red	Yellow	Orange	Green	White
		LUMINOUS INTENSITY@20mA Iv	mcd	80	150	220	180	320
Dominant Wavelength λD	nm	465	525	630	590	601	567	/
FORWARD VOLTAGE@20mA Vf	V	3.3	3.2	1.95	2	2.1	2.1	3.3

■ A single bin cannot be ordered, please contact us in advance if you need a particular bin sorting before placing your order to clarify the lead time, MOQ and pricing

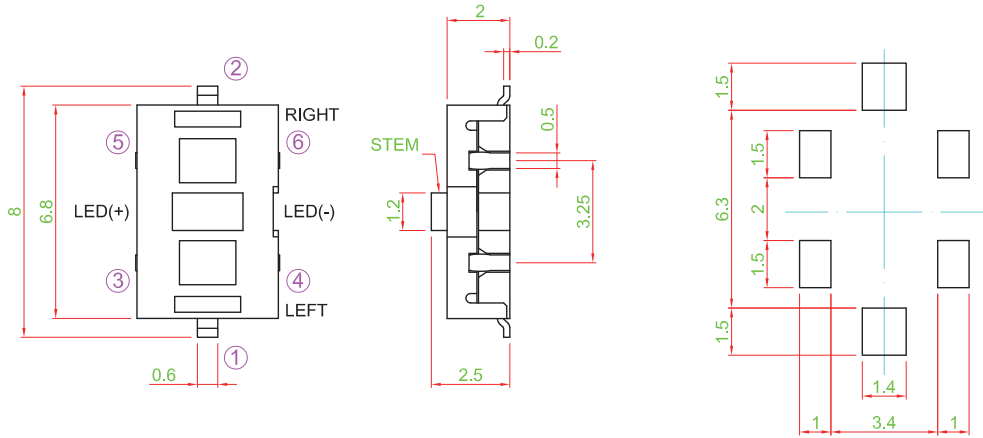
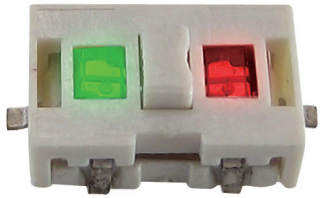
▶ HOW TO ORDER



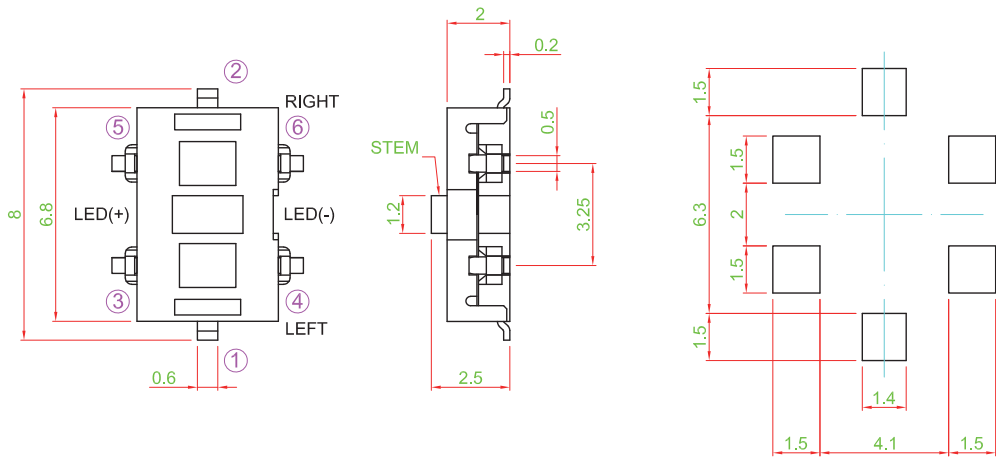
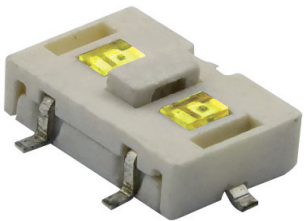


► DIMENSION

TC001-N11AAA □ □ □ □

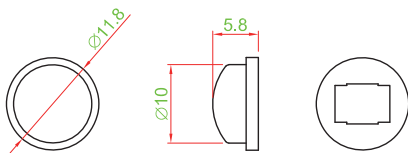


TC001-N11ABA □ □ □ □

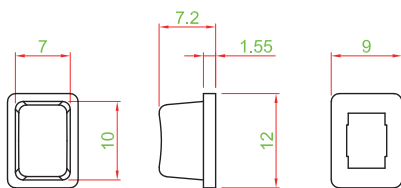


► CAP TYPE

TYPE : R



TYPE : S



► CIRCUIT

