

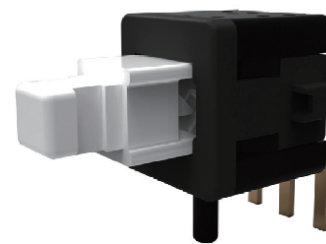


Feature :

Small size push switch (6x6 mm)
Lock / non-lock function

Application :

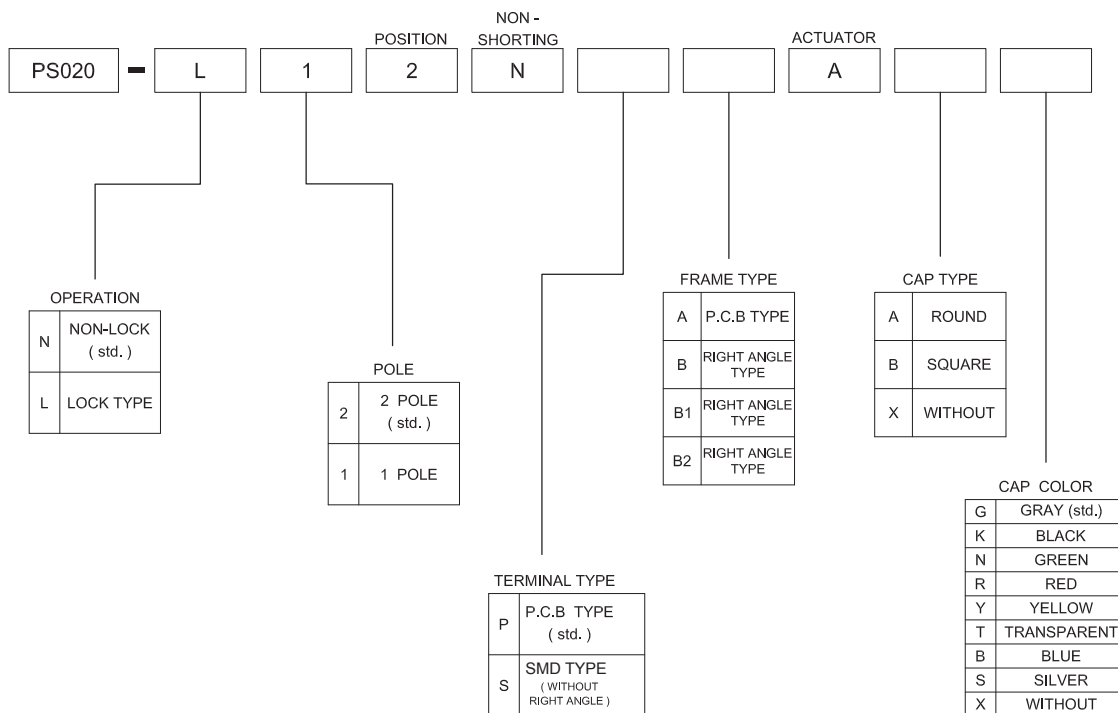
Consumer products
Computer products
Instrumentation
Communication equipments



SWITCH SPECIFICATIONS

POLE - POSITION	SPDT , DPDT
CONTACT RATING	12 V DC , 50 mA
CONTACT RESISTANCE	100 mΩ MAX. 1.5 V DC ; 100 mA , by Method of Voltage DROP
INSULATION RESISTANCE	100 MΩ MIN. 500 V DC for 1 minute
DIELECTRIC STRENGTH	Breakdown is not Allowable ; 500 V AC for 1 Minute
OPERATING FORCE	250 ± 50 gf
OPERATING LIFE	50,000 cycles
OPERATING TEMPERATURE RANGE	-40°C ~ 85°C
TOTAL TRAVEL / OPERATING TRAVEL	2 ± 0.3 mm / 1 ± 0.3 mm

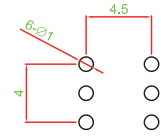
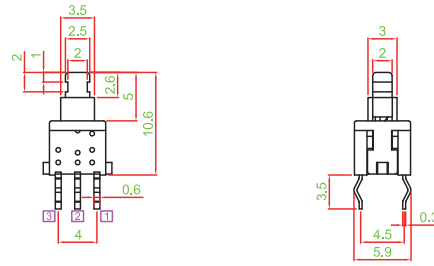
▶ HOW TO ORDER



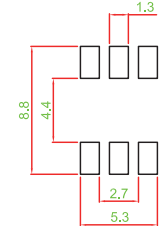
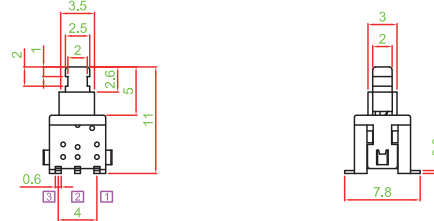


▶ TERMINAL & FRAME TYPE

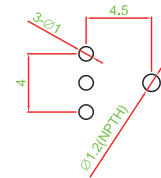
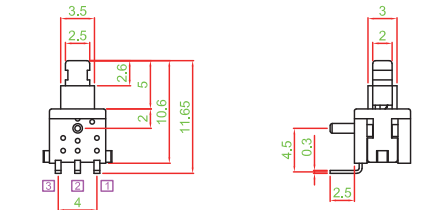
PS020-L22NPAAX



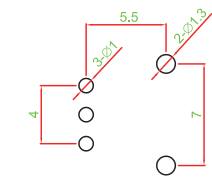
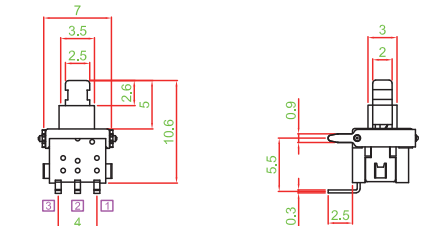
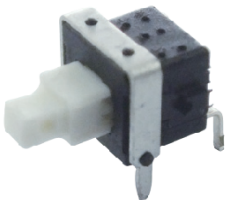
PS020-L12NSAAX



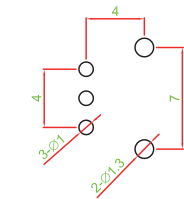
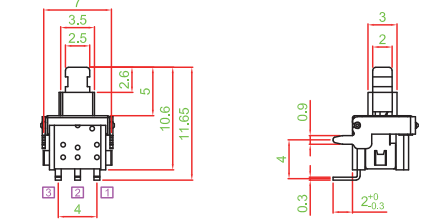
PS020-L12NPBAX



PS020-L12NPB1AX

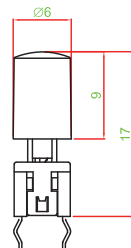


PS020-L12NPB2AX (ODM)

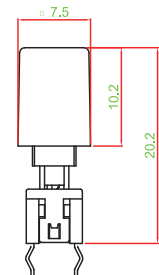


▶ CAP TYPE

A TYPE (ROUND)

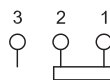


B TYPE (SQUARE)

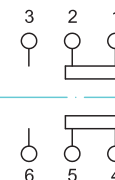


▶ CIRCUIT

SINGLE POLE



DOUBLE POLE



TACT SWITCH

PUSH BUTTON SWITCH

LED TOUCH SENSOR SWITCH

5 DIRECTION NAVIGATION SWITCH WITH LED

MEMBRANE SWITCH

LED LIGHT BAR

SLIDE SWITCH

ROTARY SWITCH

ROCKER SWITCH

DETECT SWITCH

ENCODER

INTERRUPTER

MINIATURE MICRO SWITCH

TELEPHONE HOOK SWITCH

DOOR SWITCH

MINI SIZE SOCKET

KNOB

CAP SYMBOL