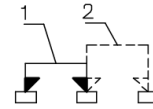
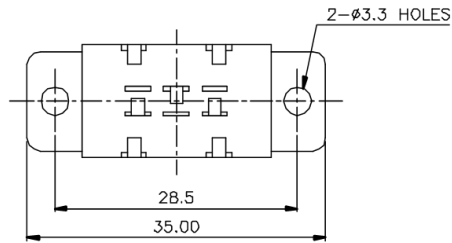
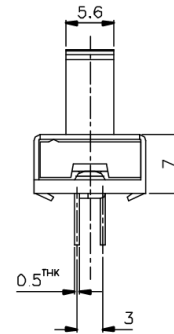
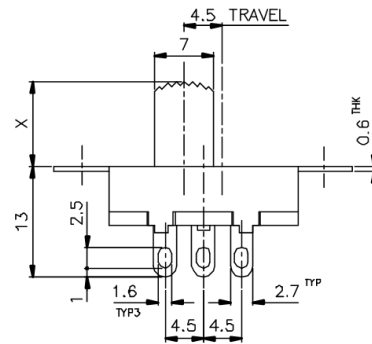
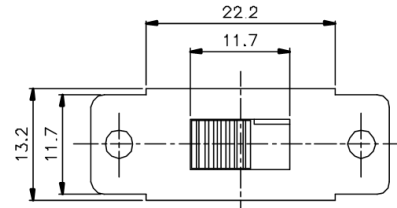



**KSD**



SCHEMATIC



X=

ISSUED	SPECIFICATION (INITIAL)	TITLE: SLIDE SWITCH 1P2T	
	RATING: 3A 6A 125V 250V AC	MODEL NO:	SS-12J18-G
	CONTACT RESISTANCE: Not more than 30mΩ	UNIT: m m	DWN
	INSULATION RESISTANCE: 500MΩ AT 500V DC	SCALE: 2 : 1	CHK'D
	WITHSTAND VOLTAGE: AC 500V FOR 1 MIN	TOLERANCE: ±0.2	APPD.
	OPERATION FORCE: 300 ± 100g		
	SWITCHING LIFE: 10000 Cycles (6-10c/m loading)		
BY:	 <b>广东科斯达电子科技有限公司</b> GUANG DONG KE SI DA ELECTRONIC TECHNOLOGY CO., LTD.	DRWG NO:	940388-00
DATE:			