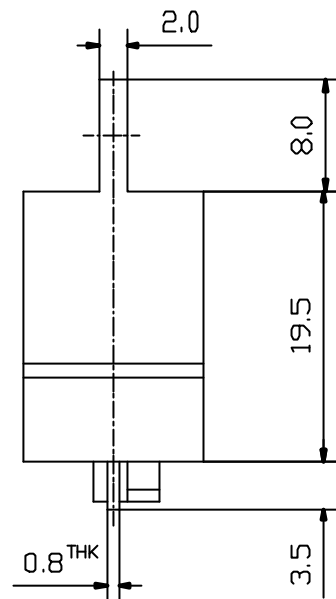



NON-SHORTING  
SCHEMATIC



ISSUED	SPECIFICATION (INITIAL)	TITLE: POWER SWITCH 1P2T		
	RATING: AC 125V 6A , 250V 3A	MODEL NO:WK-12L01-G(C <sub>b</sub> )0		
	CONTACT RESISTANCE: Not more than 30m $\Omega$	UNIT: m m	DWN	
	INSULATION RESISTANCE: 500M $\Omega$ AT 500V DC	SCALE: 2 : 1	CHK'D	
	WITHSTAND VOLTAGE:AC 1000V FOR 1 MIN	TOLERANCE: $\pm 0.20$	APPD.	
	OPERATION FORCE: 800g $\pm 400$ g			
	SWITCHING LIFE: 10000 Cycles(6-10c/m loading)			
BY:	 <b>广东科斯达电子科技有限公司</b> GUANG DONG KE SI DA ELECTRONIC TECHNOLOGY CO., LTD.	DRWG NO:		
DATE:		930116-01		